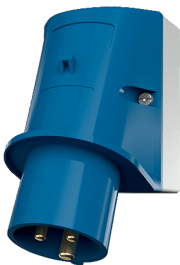


Wall mounted inlet
Part no. 332



- screw terminals
- enclosure base with stamped recess for quick cutting out

Technical specifications

Ampere	16 A
Poles	3 p
Voltage	230 V
Clock position	6 h
Hertz	50-60 Hz
Connection technology	Screw terminals
Contact	standard
Protection type	IP 44
Weight	147 g
Declaration of Conformity	VDE, EAC, CQC

Drawing

