

Wall mounted inlet
Part no. 804

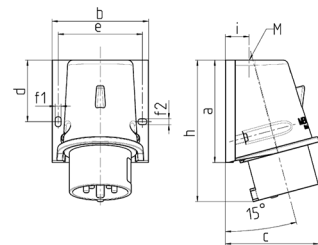


- screw terminals
- for external fixing
- for hinged lids for retrofitting see accessories

Technical specifications

Ampere	32 A
Poles	5 p
Voltage	400 V
Clock position	6 h
Hertz	50-60 Hz
Connection technology	Screw terminals
Contact	standard
Protection type	IP 44
Weight	320 g
Declaration of Conformity	VDE, EAC

Drawing



Drawing 2 MB 221 Dim. in mm	Amp. Poles	16		32		
		4	5	3	4	5
a		92.5	92.5	102	102	102
b		87	87	94	94	94
c		84.5	84.5	94	94	94
d		55.5	55.5	62	62	62
e		76	76	84	84	84
f1		5.3	5.3	5.3	5.3	5.3
f2		5.3	5.3	5.3	5.3	5.3
h		128	128	146	146	146
i		21.5	21.5	26	26	26
M		25x1.5	25x1.5	25x1.5	25x1.5	32x1.5