

Wall mounted inlet  
Part no. 363

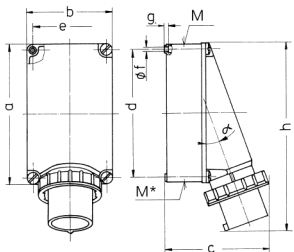


- screw terminals

Technical specifications

Ampere	125 A
Poles	4 p
Voltage	230 V
Clock position	9 h
Hertz	50-60 Hz
Connection technology	Screw terminals
Contact	standard
Protection type	IP 67
Weight	2061 g
Declaration of Conformity	EAC, CQC

Drawing



Drawing 2 MB 36	Amp. Poles	63			125	
		3	4	5	4	5
Dim. in mm						
a	b	170	170	170	264	264
c	d	118	118	118	163	163
e	f	171	171	171	205	205
g	h	134.5	134.5	134.5	240	240
i	j	103	103	103	140	140
k	l	6,1	6,1	6,1	8,1	8,1
m	n	6	6	6	8	8
o	p	250	250	250	355	355
q	r	40	40	40	50	50
s	t	2x40	2x40	2x40	50	50
u	v	25°	25°	25°	20°	20°
Max. cable diam. (mm)						
		27	27	27	38	38
Terminal for cond. cross section (mm²) min.-max.						
		6	6	6	16	16
		-16	-16	-16	-35	-35