

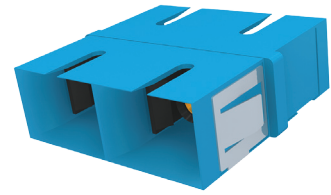
TECHNICAL SPECIFICATIONS



Adapter FMP3 Duplex ST SM

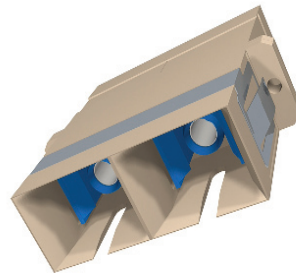
Features summary

FMP3 fibre adapters are designed for FMP3 series panels with unloaded front plates. FMP3 Adapters come in multimode (MM) and singlemode (SM) Duplex ST and Duplex SC versions as well as multimode MT-RJ connectors. Adapters are mounted with CSP-00030 mounting screws (set of 24 pcs).



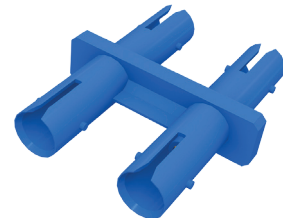
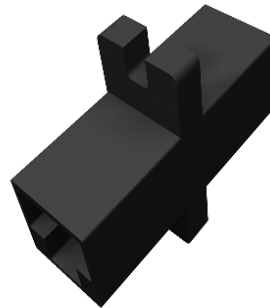
Adapter FMP3 Duplex SC MM

Adapter FMP3 Duplex ST MM



Adapter FMP3 MT-RJ MM

Adapter FMP3 Duplex SC SM



REFERENCE INFORMATION

Part number	Name
AFR-00200	Adapter FMP3 Duplex ST SM
AFR-00201	Adapter FMP3 Duplex ST MM
AFR-00202	Adapter FMP3 Duplex SC SM
AFR-00203	Adapter FMP3 Duplex SC MM
AFR-00126	Adapter FMP3 MT-RJ MM
CSP-00030	Screws for FMP3 adapters (24 pcs)

MOLEX PREMISE NETWORKS

**Molex Premise Networks
Corporate Headquarters**
Tel. +1 603 324 0200
www.molexpn.com

**Western Europe
Headquarters**
Tel +44 (0) 1489 572111
www.molexpn.co.uk

**Eastern Europe Headquarters
Polska**
Tel. + 48 22 326 07 20
www.molexpn.com.pl

Asia Headquarters
Tel. + 852 2637 3111
www.molexpn.com.hk

**South Pacific
Headquarters**
Tel. + 61 3 9971 7111
www.molexpn.com.au

Molex Incorporated
Tel. +1 630 969 4550
www.molex.com