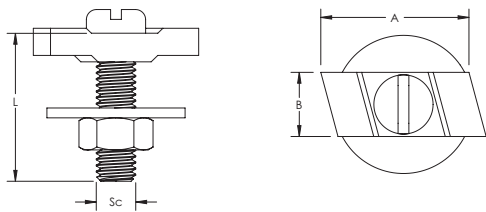


# KP T-Bolt for C-Channel E2/E2L/E3 – KP3408050 (585060)



- For use with C-Profiles
- Pre-mounted with large washer and nut



Part Number	KP3408050
Article Number	585060
Channel Type	E2 E2L E3
Material	Steel
Finish	Electrogalvanized
Screw Diameter (Sc)	M8
Screw Length (L)	50 mm
A	29 mm
B	13 mm
Standard Packaging Quantity	100 pc
UPC	78285682662
EAN-13	8711893850642

## WARNING

nVent products shall be installed and used only as indicated in nVent's product instruction sheets and training materials. Instruction sheets are available at [www.erico.com](http://www.erico.com) and from your nVent customer service representative. Improper installation, misuse, misapplication or other failure to completely follow nVent's instructions and warnings may cause product malfunction, property damage, serious bodily injury and death and/or void your warranty.

© 2021 nVent All rights reserved

nVent, nVent CADDY, nVent ERICO, nVent ERIFLEX and nVent LENTON are owned by nVent or its global affiliates.

All other trademarks are the property of their respective owners. nVent reserves the right to change specifications without prior notice.