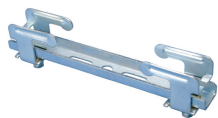
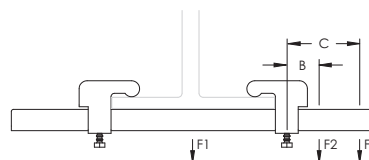
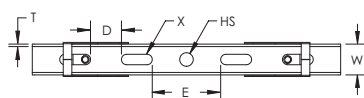
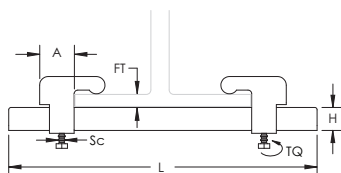


2000 Beam Clamp Kit – 2300EG (570160)



- Light duty system
- Includes clamp and U channel



Part Number	2300EG
Article Number	570160
Material	Steel
Finish	Electrogalvanized
Length (L)	300 mm
A	25 mm
B	25 mm
C	65 mm
D	25 mm
E	30.5 mm
Static Load 1 (F1)	1,700 N
Static Load 2 (F2)	490 N
Static Load 3 (F3)	340 N
Height (H)	12 mm
Width (W)	25 mm
Thickness (T)	2 mm
Flange Thickness (FT)	11 mm Max
Hole Size (HS)	11 mm
Screw Diameter (Sc)	M6
Torque (TQ)	30 N-m
Standard Packaging Quantity	25 pc
UPC	78285682056
EAN-13	3479775701608

For a secure grip the channel must extend to the outer edge of each beam clamp.

WARNING

nVent products shall be installed and used only as indicated in nVent's product instruction sheets and training materials. Instruction sheets are available at www.erico.com and from your nVent customer service representative. Improper installation, misuse, misapplication or other failure to completely follow nVent 's instructions and warnings may cause product malfunction, property damage, serious bodily injury and death and/or void your warranty.

© 2021 nVent All rights reserved

nVent, nVent CADDY, nVent ERICO, nVent ERIFLEX and nVent LENTON are owned by nVent or its global affiliates.

All other trademarks are the property of their respective owners. nVent reserves the right to change specifications without prior notice.

