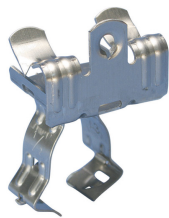
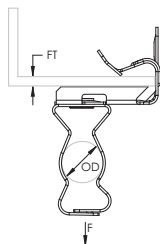


EM-M Conduit/Pipe to Flange Clip – 12EM912S1 (179830)



- Supports conduit/pipe or cable from beam flanges
- Snap close clip pivots a full 360°
- Requires only a hammer to install



Part Number	12EM912S1
Article Number	179830
Material	Stainless Steel 301 (EN 1.4310)
Outer Diameter (OD)	22 – 30 mm
Flange Thickness (FT)	14 – 20 mm
Static Load (F)	200 N
Standard Packaging Quantity	50 pc
UPC	78285652964
EAN-13	8711893798333

WARNING

nVent products shall be installed and used only as indicated in nVent's product instruction sheets and training materials. Instruction sheets are available at www.erico.com and from your nVent customer service representative. Improper installation, misuse, misapplication or other failure to completely follow nVent's instructions and warnings may cause product malfunction, property damage, serious bodily injury and death and/or void your warranty.

© 2021 nVent All rights reserved

nVent, nVent CADDY, nVent ERICO, nVent ERIFLEX and nVent LENTON are owned by nVent or its global affiliates.

All other trademarks are the property of their respective owners. nVent reserves the right to change specifications without prior notice.