

Select your language

- [German](#)
- [English](#)
- [Spanish](#)
- [French](#)
- [Dutch](#)
- [Italian](#)
- [Polish](#)
- [Czech](#)
- [Russian](#)
- [Norwegian Bokmål](#)

Worldwide English



Powering Business Worldwide

LS-XF-ZBZ - Actuator, angled, flexible



106832 LS-XF-ZBZ

[Overview](#) [Specifications](#) [Resources](#)



106832 LS-XF-ZBZ

Actuator, angled, flexible

Alternate Catalog No.

LS-XF-ZBZ

EL-Nummer (Norway)

4356185

Actuator, Basic function: actuators, Part group reference: LS...ZBZ/X, Function: Angled, flexible actuator, Stainless steel, For use with: doors that do not close precisely

- [Delivery program](#)

- [Technical data](#)

- [Design verification as per IEC/EN 61439](#)

- [Technical data ETIM 7.0](#)

- [Approvals](#)

- [Dimensions](#)

Delivery program

Basic function

actuators

Part group reference

LS...ZBZ/X

Function

Angled, flexible actuator

Description

Stainless steel

For use with

doors that do not close precisely

Notes

for combination with LS-...ZBZ/X basic devices

Technical data

General

Standards

IEC/EN 60947

Climatic proofing

Damp heat, constant, to IEC 60068-2-78; damp heat, cyclical, to IEC 60068-2-30

Mounting position

As required

Terminal capacitiesSolid

1 x (0.75 - 2.5)
 2 x (0.75 - 1.5) mm²
 Terminal capacities Flexible with ferrule
 1 x (0.5 - 1.5)
 2 x (0.5 - 1.5) mm²
 Repetition accuracy
 0.02 mm
 Contacts/switching capacity
 Rated impulse withstand voltage [U_{imp}]
 4000 V AC
 Rated insulation voltage [U_i]
 400 V
 Overvoltage category/pollution degree
 III/3
 Rated operational current [I_e] AC-1524 V [I_e]
 6 A
 Rated operational current [I_e] AC-15220 V 230 V 240 V [I_e]
 6 A
 Rated operational current [I_e] AC-15380 V 400 V 415 V [I_e]
 4 A
 Rated operational current [I_e] DC-13 24 V [I_e]
 3 A
 Rated operational current [I_e] DC-13 110 V [I_e]
 0.8 A
 Rated operational current [I_e] DC-13 220 V [I_e]
 0.3 A
 Supply frequency
 max. 400 Hz
 Short-circuit rating to IEC/EN 60947-5-1 max. fuse
 6 A gG/gL
 Mechanical variables
 Mechanical shock resistance (half-sinusoidal shock, 20 ms) Standard-action contact
 10 g
 Operating frequency [Operations/h]
 □ 800
 Actuation
 Mechanical Mechanical holding force acc. to GS-ET-19 (04/2004) XG, XW, XNG
 1700 N
 Mechanical Mechanical holding force acc. to GS-ET-19 (04/2004) XWA, XFG, XF
 1600 N
 Mechanical Mechanical holding force acc. to GS-ET-19 (04/2004) XNW
 1200 N
 Electromechanical For magnet Power consumption at 120 V AC
 8 VA
 Electromechanical For magnet Power consumption at 24 V DC
 8 W
 Electromechanical Pick-up and drop-out values
 0.85 - 1.1 x U_s
 Electromechanical Magnet duty factor
 100 % ED

Design verification as per IEC/EN 61439

Technical data for design verification
 Rated operational current for specified heat dissipation [I_t]
 0 A
 Heat dissipation per pole, current-dependent [P_{vid}]
 0 W
 Equipment heat dissipation, current-dependent [P_{vid}]
 0 W
 Static heat dissipation, non-current-dependent [P_{vs}]
 0 W
 Heat dissipation capacity [P_{diss}]
 0 W
 Operating ambient temperature min.
 -25 °C
 Operating ambient temperature max.
 +40 °C
 IEC/EN 61439 design verification

10.2 Strength of materials and parts 10.2.2 Corrosion resistance
Meets the product standard's requirements.

10.2 Strength of materials and parts 10.2.3.1 Verification of thermal stability of enclosures
Meets the product standard's requirements.

10.2 Strength of materials and parts 10.2.3.2 Verification of resistance of insulating materials to normal heat
Meets the product standard's requirements.

10.2 Strength of materials and parts 10.2.3.3 Verification of resistance of insulating materials to abnormal heat and fire due to internal electric effects
Meets the product standard's requirements.

10.2 Strength of materials and parts 10.2.4 Resistance to ultra-violet (UV) radiation
Please enquire

10.2 Strength of materials and parts 10.2.5 Lifting
Does not apply, since the entire switchgear needs to be evaluated.

10.2 Strength of materials and parts 10.2.6 Mechanical impact
Does not apply, since the entire switchgear needs to be evaluated.

10.2 Strength of materials and parts 10.2.7 Inscriptions
Meets the product standard's requirements.

10.3 Degree of protection of ASSEMBLIES
Does not apply, since the entire switchgear needs to be evaluated.

10.4 Clearances and creepage distances
Meets the product standard's requirements.

10.5 Protection against electric shock
Does not apply, since the entire switchgear needs to be evaluated.

10.6 Incorporation of switching devices and components
Does not apply, since the entire switchgear needs to be evaluated.

10.7 Internal electrical circuits and connections
Is the panel builder's responsibility.

10.8 Connections for external conductors
Is the panel builder's responsibility.

10.9 Insulation properties 10.9.2 Power-frequency electric strength
Is the panel builder's responsibility.

10.9 Insulation properties 10.9.3 Impulse withstand voltage
Is the panel builder's responsibility.

10.9 Insulation properties 10.9.4 Testing of enclosures made of insulating material
Is the panel builder's responsibility.

10.10 Temperature rise
Not applicable.

10.11 Short-circuit rating
Is the panel builder's responsibility. The specifications for the switchgear must be observed.

10.12 Electromagnetic compatibility
Is the panel builder's responsibility. The specifications for the switchgear must be observed.

10.13 Mechanical function
The device meets the requirements, provided the information in the instruction leaflet (IL) is observed.

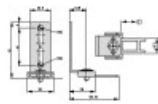
Technical data ETIM 7.0

Sensors (EG000026) / Actuator for position switch with separate actuator (EC001487)
Electric engineering, automation, process control engineering / Binary sensor technology, safety-related sensor technology / Position switch / Actuator for position switch with separate actuator (ec1@ss10.0.1-27-27-06-05 [BAA078012])
Model
Actuator with vertical mounting

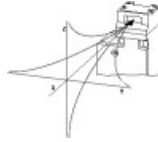
Approvals

Product Standards
IEC/EN 60947-5; UL 508; CSA-C22.2 No. 14; CE marking
UL File No.
E29184
UL Category Control No.
NKCR
CSA File No.
12528
CSA Class No.
3211-03
North America Certification
UL listed, CSA certified

Dimensions



□ Distance to device head = 0.1 ... 3.0 mm



CAD data

- [Product-specific CAD data](#)
(Web)
- [3D Preview](#)
(Web)

DWG files

- [DA-CD-Is_xf_zbz](#)
File
(Web)

Step files

- [DA-CS-Is_xf_zbz](#)
File
(Web)

Product photo

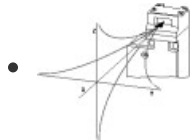


[1310PIC-237](#)

Photo

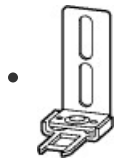
Angled, flexible actuator

3D drawing



[1310DRW-32](#)

Line drawing

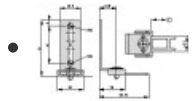


[1311I08](#)

Line drawing

Angled, flexible actuator

Dimensions single product



[1310DIM-9](#)

Line drawing

Angled, flexible actuator

□ Distance to device head = 0.1 ... 3.0 mm

Declaration of Conformity

EU

- [DA-DC-00003155](#)
Asset
(PDF)

Download-Center

- [Download-Center \(this item\)](#)
Eaton EMEA Download-Center - download data for this item
- [Download-Center](#)
Eaton EMEA Download-Center

 [Generate data sheet in PDF format](#)

 [Generate data sheet in Excel format](#)

 [Write a comment](#)

[Imprint](#) [Privacy Policy](#) [Legal Disclaimer](#) [Terms and Conditions](#)
© 2021 by Eaton Industries GmbH

