



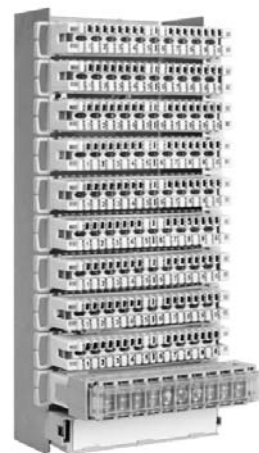
Features and Benefits

The Molex Voice Cabling system is expressly designed for voice circuits, such as block cabling and PBX inter connections. The Molex voice cabling system provides a complete range of products to facilitate a complete voice cabling system, including; termination modules, mounting frames, distribution boxes, tester interfaces and over-voltage protection.

The Voice Cabling system is compatible with other popular cabling systems enabling integration with legacy systems for expansion or refurbishment projects.

A number of different size back mount frames are available to accommodate the modules to suit a variety of application and environments. The frames accommodate modules, over-voltage protection and labelling equipment for a complete system.

- Available in 30, 50, 100 pair configurations.
- Stainless Steel construction.
- Modules mount directly onto frame.
- Label holder available separately.
- Dust covers available separately.
- Suitable for wall or cabinet installations.



ORDERING INFORMATION

Order No.	Description
DCN-00003	Back Mount Frame, 30 pair (3 module)
DCN-00004	Back Mount Frame, 50 pair (5 module)
DCN-00005	Back Mount Frame, 100 pair (10 module)
DCN-00013	Dust Cover (short version-for use with 100 pair Back Mount Frame w/o gas arrestor magazine)
DCN-00019	Dust Cover (Deep version-for use with 100 pair Back Mount Frame equipped with gas arrestor magazine)

This information is correct as at the time of publication, specifications are subject to change

Corporate Headquarters
Tel: 630 969 4550
www.molexpn.com

European Headquarters
Tel: 44 (0) 1489 572111
www.molexpn.co.uk

Pacific Rim Headquarters
Tel: 61 3 9971 7111
www.molexpn.com.au