

## TECHNICAL INFORMATION:

### UTILI-TRACE CABLE LOCATOR

Proximity alarm	Service less than 30cm deep
Depth range	to 3m
Environmental Protection	IP54 shower proof
Batteries	6 x AA alkaline (IEC LR6 supplied)
Battery life	40 hours intermittent use (at 20°C)
Weight	2.7kg including batteries

### UTILI-GEN SIGNAL TRANSMITTER

Power Supply	UK 13AMP Plug Mains 230Vrms
Dimensions (mm)	Width: 61 • Height: 47 • Length: 103
Environmental Conditions	Indoor Use Only. Temperature Range: 0 - 40 C
Rating Input Voltage	230V
Power Consumption	2VA
Weight	255g

For further information and training on the Utili-Finder system visit

[www.UTILIFINDER.COM](http://www.UTILIFINDER.COM)

Manufacturers: Cable Detection Limited • Unit 1 Blythe Business Park • Cresswell • Stoke on Trent • Staffordshire • ST11 9RD

**elma**  **instruments**

151003

## UTILI-FINDER USER MANUAL

- ✓ Find Electricity Cables
- ✓ Reduce Cable Strikes

*The Utili-Finder may also detect earth bonded utilities such as...*

- ✓ Cable TV
- ✓ Telecom Cables
- ✓ Metal Gas and Water Pipes

#### GENERAL INFORMATION

The Utili-Finder system operates by creating a detectable signal conducted onto the mains electricity supply and electrically bonded conductive services.

Depending on the material of the utilities present and the electrical safety earth bonding arrangement then when the Utili-Gen blue LED is lit the Utili-Finder may additionally enable metal water and gas pipes, telecom and cable TV cables to be successfully found.

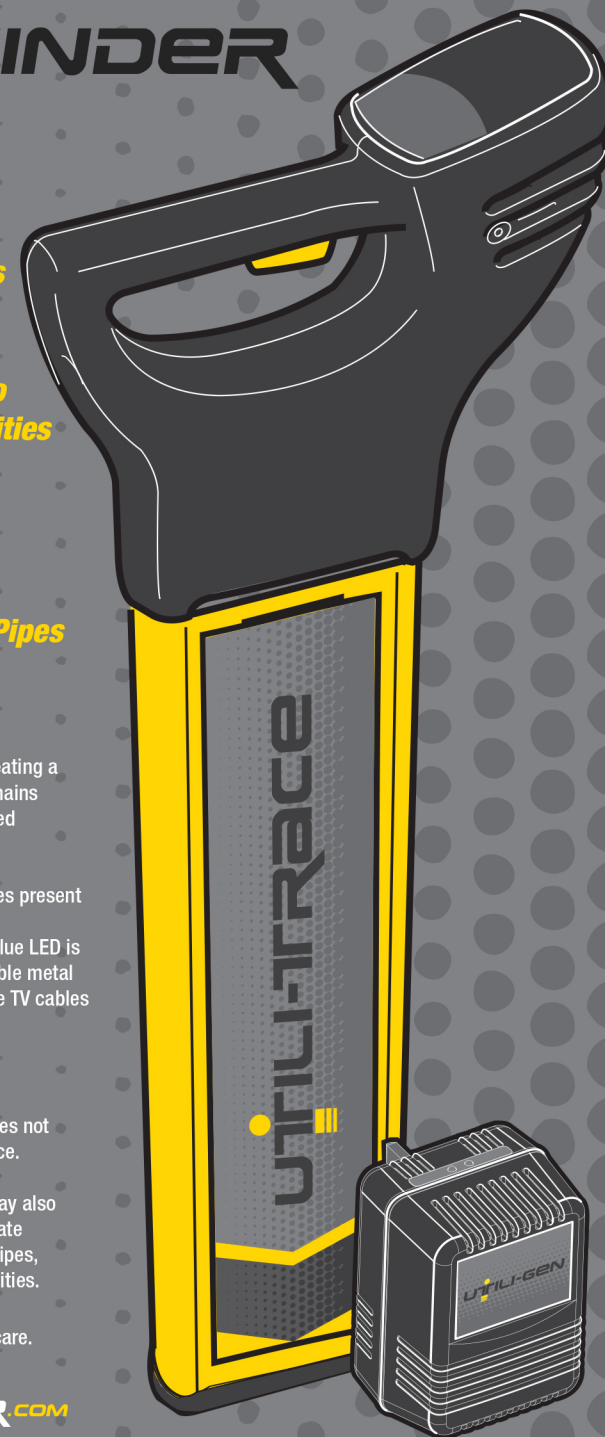
#### CAUTION

The absence of a positive indication does not guarantee the non-existence of a service.

Services without a detectable signal may also be present. The Utili-Finder will not locate non-metallic services such as plastic pipes, typically used by the water and gas utilities.

**PRECAUTIONS:** Always excavate with care.

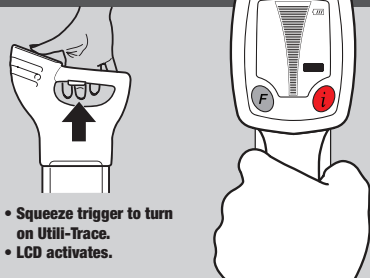
[www.UTILIFINDER.COM](http://www.UTILIFINDER.COM)



## Your Utili-Finder kit will include the following items...



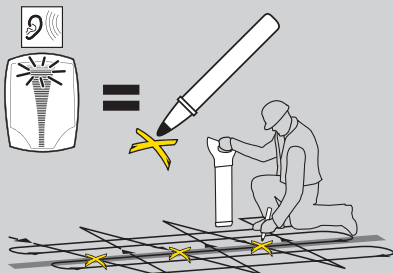
## STEP 2: UTILI-TRACE



- Squeeze trigger to turn on Utili-Trace.
- LCD activates.

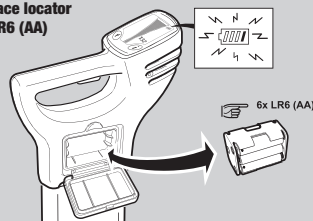
## STEP 4: MARK

- When the bar graph is at the highest point you are directly over the service and should mark the ground.
- Joining your marks indicates the path of the service.

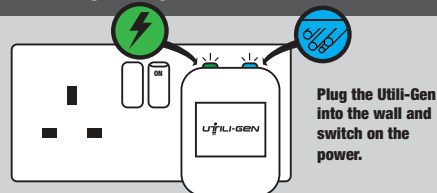


## BATTERIES

- When battery symbol shows one bar replace batteries.
- The Utili-Trace locator takes 6 x LR6 (AA) batteries.



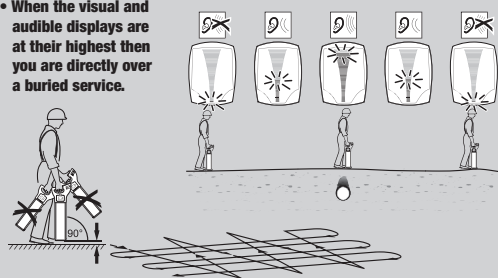
## STEP 1: UTILI-GEN



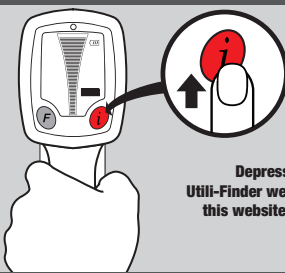
The green light confirms that power cables can be traced.  
The blue light indicates that some other services can be traced.

## STEP 3: SEARCH

- Do not swing the Utili-Trace. Hold at a 90° angle.
- Sweep the floor in a zig zag pattern ensuring the whole area is covered.
- When the visual and audible displays are at their highest then you are directly over a buried service.



## FUNCTIONALITY OF KEYS



### i BUTTON information:

Depress the i button for 2 seconds. The Utili-Finder website address will be displayed, this website provides all online support and training information.

### F BUTTON Functional test:

Ensure that the Utili-Gen unit is turned off. Depress the F button for 2 seconds. The Utili-Trace will automatically carry out a functional test.

PAS means unit is within set tolerances  
ERR means unit is outside set tolerances and may need servicing

- Repeat the test in a different location if the unit displays ERR
- The Locator will automatically repeat the function test if it fails
- Repeated failure will indicate a faulty unit, which must be returned for service

## SAFETY DIRECTIONS

The symbols used in this manual have the following meanings:

- DANGER** Indicates an imminently hazardous situation which, if not avoided, will result in death or serious injury.
- WARNING** Indicates a potentially hazardous situation or an unintended use which, if not avoided, could result in death or serious injury.
- CAUTION** Indicates a potentially hazardous situation or an unintended use which, if not avoided, may result in minor or moderate injury and/or appreciable material, financial and environmental damage.
- Important paragraphs which must be adhered to in practice as they enable the product to be used in a technically correct and efficient manner.

The following directions should enable the person responsible for the product, and the person who actually uses the equipment, to anticipate and avoid operational hazards.

**PERMITTED USE:** The products are intended to be used for the detection and localization of underground metallic services: cables and metallic pipes. Utili-Gen is for indoor use only.

**REPAIR:** The products contain no user serviceable parts and do not require regular maintenance. Only Utili-Finder authorised service workshops are entitled to repair these products.

### DO NOT

- Use products with obviously recognizable damage or defects
- Connect Utili-Gen to a electrical socket with recognizable damage or defects or when wet
- Open or modify the product using tools, for example screwdriver
- Disable electrical equipment safety systems
- Remove hazard notices

### HAZARDS OF USE

- WARNING** High mechanical stress, high ambient temperatures or immersion into fluids can cause leakage, fire or explosions of the batteries.  
**Precautions:** Protect the batteries from mechanical influences and high ambient temperatures. Do not drop or immerse batteries into fluids.
- CAUTION** During the transport, shipping or disposal of batteries it is possible for inappropriate mechanical influences to constitute a fire hazard.  
**Precautions:** Before shipping the product or disposing of it, discharge the batteries by running the product until they are flat.

When transporting or shipping batteries, the person in charge of the product must ensure that the applicable national and international rules and regulations are observed. Before transportation or shipping contact your local passenger or freight transport company.

### DISPOSAL

- The product must not be disposed with household waste. Dispose of the product appropriately in accordance with the national regulations in force in your country.  
Always prevent access to the product by unauthorised personnel.

- WARNING** If the product is improperly disposed of, the following can happen:

- If polymer parts are burnt, poisonous gases are produced which may impair health
- If batteries are damaged or are heated strongly, they can explode and cause poisoning, burning, corrosion or environmental contamination
- By disposing of the product irresponsibly you may enable unauthorised persons to use it in contravention of the regulations, exposing themselves and third parties to the risk of severe injury and rendering the environment liable to contamination
- Improper disposal of silicone oil may cause environmental contamination

**Precautions:** Product specific treatment and waste management information can be downloaded from the Utili-Finder website at [www.utilifinder.com](http://www.utilifinder.com) or received from your Utili-Finder dealer.

### ELECTROMAGNETIC COMPATIBILITY EMC

The term Electromagnetic Compatibility is taken to mean the capability of the product to function smoothly in an environment where electromagnetic radiation and electrostatic discharges are present, and without causing electromagnetic disturbances to other equipment.

- WARNING** **ELECTROMAGNETIC RADIATION CAN CAUSE DISTURBANCES IN OTHER EQUIPMENT.**  
Although the product meets the strict regulations and standards which are in force in this respect, the manufacturer cannot completely exclude the possibility that other equipment may be disturbed.

### LABELLING:

#### UTILI-TRACE

Type:  S.No.:

Power:  Cable Detection Ltd.  
Stoke-on-Trent, Staffordshire  
UK. 01902 551111 / 200kVA max.

NOTICE  
This device complies with part 15 of the FCC Rules. Operation is subject to the following two conditions:  
(1) This device may not cause harmful interference, and (2) this device must accept any interference received, including interference that may cause undesired operation.

CE, RoHS, WEEE, REACH, EN61326-1, EN61326-2-1, EN61326-2-2, EN61326-2-3, EN61326-2-4, EN61326-2-5, EN61326-2-6, EN61326-2-7, EN61326-2-8, EN61326-2-9, EN61326-2-10, EN61326-2-11, EN61326-2-12, EN61326-2-13, EN61326-2-14, EN61326-2-15, EN61326-2-16, EN61326-2-17, EN61326-2-18, EN61326-2-19, EN61326-2-20, EN61326-2-21, EN61326-2-22, EN61326-2-23, EN61326-2-24, EN61326-2-25, EN61326-2-26, EN61326-2-27, EN61326-2-28, EN61326-2-29, EN61326-2-30, EN61326-2-31, EN61326-2-32, EN61326-2-33, EN61326-2-34, EN61326-2-35, EN61326-2-36, EN61326-2-37, EN61326-2-38, EN61326-2-39, EN61326-2-40, EN61326-2-41, EN61326-2-42, EN61326-2-43, EN61326-2-44, EN61326-2-45, EN61326-2-46, EN61326-2-47, EN61326-2-48, EN61326-2-49, EN61326-2-50, EN61326-2-51, EN61326-2-52, EN61326-2-53, EN61326-2-54, EN61326-2-55, EN61326-2-56, EN61326-2-57, EN61326-2-58, EN61326-2-59, EN61326-2-60, EN61326-2-61, EN61326-2-62, EN61326-2-63, EN61326-2-64, EN61326-2-65, EN61326-2-66, EN61326-2-67, EN61326-2-68, EN61326-2-69, EN61326-2-70, EN61326-2-71, EN61326-2-72, EN61326-2-73, EN61326-2-74, EN61326-2-75, EN61326-2-76, EN61326-2-77, EN61326-2-78, EN61326-2-79, EN61326-2-80, EN61326-2-81, EN61326-2-82, EN61326-2-83, EN61326-2-84, EN61326-2-85, EN61326-2-86, EN61326-2-87, EN61326-2-88, EN61326-2-89, EN61326-2-90, EN61326-2-91, EN61326-2-92, EN61326-2-93, EN61326-2-94, EN61326-2-95, EN61326-2-96, EN61326-2-97, EN61326-2-98, EN61326-2-99, EN61326-2-100, EN61326-2-101, EN61326-2-102, EN61326-2-103, EN61326-2-104, EN61326-2-105, EN61326-2-106, EN61326-2-107, EN61326-2-108, EN61326-2-109, EN61326-2-110, EN61326-2-111, EN61326-2-112, EN61326-2-113, EN61326-2-114, EN61326-2-115, EN61326-2-116, EN61326-2-117, EN61326-2-118, EN61326-2-119, EN61326-2-120, EN61326-2-121, EN61326-2-122, EN61326-2-123, EN61326-2-124, EN61326-2-125, EN61326-2-126, EN61326-2-127, EN61326-2-128, EN61326-2-129, EN61326-2-130, EN61326-2-131, EN61326-2-132, EN61326-2-133, EN61326-2-134, EN61326-2-135, EN61326-2-136, EN61326-2-137, EN61326-2-138, EN61326-2-139, EN61326-2-140, EN61326-2-141, EN61326-2-142, EN61326-2-143, EN61326-2-144, EN61326-2-145, EN61326-2-146, EN61326-2-147, EN61326-2-148, EN61326-2-149, EN61326-2-150, EN61326-2-151, EN61326-2-152, EN61326-2-153, EN61326-2-154, EN61326-2-155, EN61326-2-156, EN61326-2-157, EN61326-2-158, EN61326-2-159, EN61326-2-160, EN61326-2-161, EN61326-2-162, EN61326-2-163, EN61326-2-164, EN61326-2-165, EN61326-2-166, EN61326-2-167, EN61326-2-168, EN61326-2-169, EN61326-2-170, EN61326-2-171, EN61326-2-172, EN61326-2-173, EN61326-2-174, EN61326-2-175, EN61326-2-176, EN61326-2-177, EN61326-2-178, EN61326-2-179, EN61326-2-180, EN61326-2-181, EN61326-2-182, EN61326-2-183, EN61326-2-184, EN61326-2-185, EN61326-2-186, EN61326-2-187, EN61326-2-188, EN61326-2-189, EN61326-2-190, EN61326-2-191, EN61326-2-192, EN61326-2-193, EN61326-2-194, EN61326-2-195, EN61326-2-196, EN61326-2-197, EN61326-2-198, EN61326-2-199, EN61326-2-200, EN61326-2-201, EN61326-2-202, EN61326-2-203, EN61326-2-204, EN61326-2-205, EN61326-2-206, EN61326-2-207, EN61326-2-208, EN61326-2-209, EN61326-2-210, EN61326-2-211, EN61326-2-212, EN61326-2-213, EN61326-2-214, EN61326-2-215, EN61326-2-216, EN61326-2-217, EN61326-2-218, EN61326-2-219, EN61326-2-220, EN61326-2-221, EN61326-2-222, EN61326-2-223, EN61326-2-224, EN61326-2-225, EN61326-2-226, EN61326-2-227, EN61326-2-228, EN61326-2-229, EN61326-2-230, EN61326-2-231, EN61326-2-232, EN61326-2-233, EN61326-2-234, EN61326-2-235, EN61326-2-236, EN61326-2-237, EN61326-2-238, EN61326-2-239, EN61326-2-240, EN61326-2-241, EN61326-2-242, EN61326-2-243, EN61326-2-244, EN61326-2-245, EN61326-2-246, EN61326-2-247, EN61326-2-248, EN61326-2-249, EN61326-2-250, EN61326-2-251, EN61326-2-252, EN61326-2-253, EN61326-2-254, EN61326-2-255, EN61326-2-256, EN61326-2-257, EN61326-2-258, EN61326-2-259, EN61326-2-260, EN61326-2-261, EN61326-2-262, EN61326-2-263, EN61326-2-264, EN61326-2-265, EN61326-2-266, EN61326-2-267, EN61326-2-268, EN61326-2-269, EN61326-2-270, EN61326-2-271, EN61326-2-272, EN61326-2-273, EN61326-2-274, EN61326-2-275, EN61326-2-276, EN61326-2-277, EN61326-2-278, EN61326-2-279, EN61326-2-280, EN61326-2-281, EN61326-2-282, EN61326-2-283, EN61326-2-284, EN61326-2-285, EN61326-2-286, EN61326-2-287, EN61326-2-288, EN61326-2-289, EN61326-2-290, EN61326-2-291, EN61326-2-292, EN61326-2-293, EN61326-2-294, EN61326-2-295, EN61326-2-296, EN61326-2-297, EN61326-2-298, EN61326-2-299, EN61326-2-300, EN61326-2-301, EN61326-2-302, EN61326-2-303, EN61326-2-304, EN61326-2-305, EN61326-2-306, EN61326-2-307, EN61326-2-308, EN61326-2-309, EN61326-2-310, EN61326-2-311, EN61326-2-312, EN61326-2-313, EN61326-2-314, EN61326-2-315, EN61326-2-316, EN61326-2-317, EN61326-2-318, EN61326-2-319, EN61326-2-320, EN61326-2-321, EN61326-2-322, EN61326-2-323, EN61326-2-324, EN61326-2-325, EN61326-2-326, EN61326-2-327, EN61326-2-328, EN61326-2-329, EN61326-2-330, EN61326-2-331, EN61326-2-332, EN61326-2-333, EN61326-2-334, EN61326-2-335, EN61326-2-336, EN61326-2-337, EN61326-2-338, EN61326-2-339, EN61326-2-340, EN61326-2-341, EN61326-2-342, EN61326-2-343, EN61326-2-344, EN61326-2-345, EN61326-2-346, EN61326-2-347, EN61326-2-348, EN61326-2-349, EN61326-2-350, EN61326-2-351, EN61326-2-352, EN61326-2-353, EN61326-2-354, EN61326-2-355, EN61326-2-356, EN61326-2-357, EN61326-2-358, EN61326-2-359, EN61326-2-360, EN61326-2-361, EN61326-2-362, EN61326-2-363, EN61326-2-364, EN61326-2-365, EN61326-2-366, EN61326-2-367, EN61326-2-368, EN61326-2-369, EN61326-2-370, EN61326-2-371, EN61326-2-372, EN61326-2-373, EN61326-2-374, EN61326-2-375, EN61326-2-376, EN61326-2-377, EN61326-2-378, EN61326-2-379, EN61326-2-380, EN61326-2-381, EN61326-2-382, EN61326-2-383, EN61326-2-384, EN61326-2-385, EN61326-2-386, EN61326-2-387, EN61326-2-388, EN61326-2-389, EN61326-2-390, EN61326-2-391, EN61326-2-392, EN61326-2-393, EN61326-2-394, EN61326-2-395, EN61326-2-396, EN61326-2-397, EN61326-2-398, EN61326-2-399, EN61326-2-400, EN61326-2-401, EN61326-2-402, EN61326-2-403, EN61326-2-404, EN61326-2-405, EN61326-2-406, EN61326-2-407, EN61326-2-408, EN61326-2-409, EN61326-2-410, EN61326-2-411, EN61326-2-412, EN61326-2-413, EN61326-2-414, EN61326-2-415, EN61326-2-416, EN61326-2-417, EN61326-2-418, EN61326-2-419, EN61326-2-420, EN61326-2-421, EN61326-2-422, EN61326-2-423, EN61326-2-424, EN61326-2-425, EN61326-2-426, EN61326-2-427, EN61326-2-428, EN61326-2-429, EN61326-2-430, EN61326-2-431, EN61326-2-432, EN61326-2-433, EN61326-2-434, EN61326-2-435, EN61326-2-436, EN61326-2-437, EN61326-2-438, EN61326-2-439, EN61326-2-440, EN61326-2-441, EN61326-2-442, EN61326-2-443, EN61326-2-444, EN61326-2-445, EN61326-2-446, EN61326-2-447, EN61326-2-448, EN61326-2-449, EN61326-2-450, EN61326-2-451, EN61326-2-452, EN61326-2-453, EN61326-2-454, EN61326-2-455, EN61326-2-456, EN61326-2-457, EN61326-2-458, EN61326-2-459, EN61326-2-460, EN61326-2-461, EN61326-2-462, EN61326-2-463, EN61326-2-464, EN61326-2-465, EN61326-2-466, EN61326-2-467, EN61326-2-468, EN61326-2-469, EN61326-2-470, EN61326-2-471, EN61326-2-472, EN61326-2-473, EN61326-2-474, EN61326-2-475, EN61326-2-476, EN61326-2-477, EN61326-2-478, EN61326-2-479, EN61326-2-480, EN61326-2-481, EN61326-2-482, EN61326-2-483, EN61326-2-484, EN61326-2-485, EN61326-2-486, EN61326-2-487, EN61326-2-488, EN61326-2-489, EN61326-2-490, EN61326-2-491, EN61326-2-492, EN61326-2-493, EN61326-2-494, EN61326-2-495, EN61326-2-496, EN61326-2-497, EN61326-2-498, EN61326-2-499, EN61326-2-500, EN61326-2-501, EN61326-2-502, EN61326-2-503, EN61326-2-504, EN61326-2-505, EN61326-2-506, EN61326-2-507, EN61326-2-508, EN61326-2-509, EN61326-2-510, EN61326-2-511, EN61326-2-512, EN61326-2-513, EN61326-2-514, EN61326-2-515, EN61326-2-516, EN61326-2-517, EN61326-2-518, EN61326-2-519, EN61326-2-520, EN61326-2-521, EN61326-2-522, EN61326-2-523, EN61326-2-524, EN61326-2-525, EN61326-2-526, EN61326-2-527, EN61326-2-528, EN61326-2-529, EN61326-2-530, EN61326-2-531, EN61326-2-532, EN61326-2-533, EN61326-2-534, EN61326-2-535, EN61326-2-536, EN61326-2-537, EN61326-2-538, EN61326-2-539, EN61326-2-540, EN61326-2-541, EN61326-2-542, EN61326-2-543, EN61326-2-544, EN61326-2-545, EN61326-2-546, EN61326-2-547, EN61326-2-548, EN61326-2-549, EN61326-2-550, EN61326-2-551, EN61326-2-552, EN61326-2-553, EN61326-2-554, EN61326-2-555, EN61326-2-556, EN61326-2-557, EN61326-2-558, EN61326-2-559, EN61326-2-560, EN61326-2-561, EN61326-2-562, EN61326-2-563, EN61326-2-564, EN61326-2-565, EN61326-2-566, EN61326-2-567, EN61326-2-568, EN61326-2-569, EN61326-2-570, EN61326-2-571, EN61326-2-572, EN61326-2-573, EN61326-2-574, EN61326-2-575, EN61326-2-576, EN61326-2-577, EN61326-2-578, EN61326-2-579, EN61326-2-580, EN61326-2-581, EN61326-2-582, EN61326-2-583, EN61326-2-584, EN61326-2-585, EN61326-2-586, EN61326-2-587, EN61326-2-588, EN61326-2-589, EN61326-2-590, EN61326-2-591, EN61326-2-592, EN61326-2-593, EN61326-2-594, EN61326-2-595, EN61326-2-596, EN61326-2-597, EN61326-2-598, EN61326-2-599, EN61326-2-600, EN61326-2-601, EN61326-2-602, EN61326-2-603, EN61326-2-604, EN61326-2-605, EN61326-2-606, EN61326-2-607, EN61326-2-608, EN61326-2-609, EN61326-2-610, EN61326-2-611, EN61326-2-612, EN61326-2-613, EN61326-2-614, EN61326-2-615, EN61326-2-616, EN61326-2-617, EN61326-2-618, EN61326-2-619, EN61326-2-620, EN61326-2-621, EN61326-2-622, EN61326-2-623, EN61326-2-624, EN61326-2-625, EN61326-2-626, EN61326-2-627, EN61326-2-628, EN61326-2-629, EN61326-2-630, EN61326-2-631, EN61326-2-632, EN61326-2-633, EN61326-2-634, EN61326-2-635, EN61326-2-636, EN61326-2-637, EN61326-2-638, EN61326-2-639, EN61326-2-640, EN61326-2-641, EN61326-2-642, EN61326-2-643, EN61326-2-644, EN61326-2-645, EN61326-2-646, EN61326-2-647, EN61326-2-648, EN61326-2-649, EN61326-2-650, EN61326-2-651, EN61326-2-652, EN61326-2-653, EN61326-2-654, EN61326-2-655, EN61326-2-656, EN61326-2-657, EN61326-2-658, EN61326-2-659, EN61326-2-660, EN61326-2-661, EN61326-2-662, EN61326-2-663, EN61326-2-664, EN61326-2-665, EN61326-2-666, EN61326-2-667, EN61326-2-668, EN61326-2-669, EN61326-2-670, EN61326-2-671, EN61326-2-672, EN61326-2-673, EN61326-2-674, EN61326-2-675, EN61326-2-676, EN61326-2-677, EN61326-2-678, EN61326-2-679, EN61326-2-680, EN61326-2-681, EN61326-2-682, EN61326-2-683, EN61326-2-684, EN61326-2-685, EN61326-2-686, EN61326-2-687, EN61326-2-688, EN61326-2-689, EN61326-2-690, EN61326-2-691, EN61326-2-692, EN61326-2-693, EN61326-2-694, EN61326-2-695, EN61326-2-696, EN61326-2-697, EN61