

# PORTABLE APPLIANCE SAFETY TESTING SOFTWARE

 PATLink PRO

 PATLink PRO Plus

Professional PAT test management and reporting software



The PATLink PRO PC SW is an advanced, user friendly software package designed with the portable appliance testing engineer in mind. The graphical interface with drag and drop appliance relocation, data filtering, data archiving functions and automatic report generation allows a variety of users with a range of different skills and abilities to create professional reports which include company logos. The PATLink PRO Plus software introduces extra features including the ability to reload data onto Metrel's uploadable/downloadable testers, perform trend analysis on equipment to analyze and introduces a PRO Plus certificates and individual appliance reports.

#### PC SW PATLink PRO / PRO Plus is compatible with:

- MI 3304 BetaPAT Plus
- MI 3305 OmegaPAT Plus
- MI 3311 GammaPAT
- MI 3321 MultiservicerXA
- MI 2142 AlphaPAT
- MI 2141 BetaPAT
- MI 2140 OmegaPAT

#### Who are the users?

The PATlink PRO software can be used by a variety of engineers including experienced people who perform PAT testing full time, new users venturing into performing PAT testing, PAT testing businesses, maintenance engineers and people who only perform PAT testing occasionally/part-time.

## Key features

- Full data filtering
- Icon style or table style
- "Drag & Drop"
- Customer/Test engineer database
- Automatic PRO report generation
- Company logo loading
- Data Backup
- Appliance information editing
- Export of test results
- PDF report
- Full built-in help files
- Automatic self-test record keeping (MI 3311 only)
- Plug & Play
- Upload data back to PAT tester (MI 3304, MI 3305 and MI 3321)
- Location information uploading (MI 3304, MI 3305 and MI 3321)
- Trend analysis
- PATLink PRO PLUS professional reports



## PATLink PRO

The PatLink PRO PC software can be used for a variety of tasks including downloading PAT data, reviewing/rearranging test results, editing of appliance information and creating/printing test reports.



### KEY FEATURES:

- **Full data filtering:** All data can be filtered by different parameters: Retest Date, Test Date, Project, User, etc.
- **Icon style or table style:** Data can be represented in tree or table form.
- **Drag and drop:** The elements of the structure can be relocated and re-named.
- **Customer/Test engineer database:** It allows you to create your own database of customers fully equipped with all appropriate data.
- **Automatic PRO report generation:** Enables automatic generation of Test Report (standard or full detailed).
- **Company logo loading:** Allows to upload different company logotype, so it can be printed on Test Reports.
- **Data Backup:** All downloaded data can be backed up to prevent the loss of valuable data for example in case of hard disk failure.
- **Appliance information editing:** Allows you to edit data, e.g. to set up Retest Date, Repair Code, add Comment, etc.
- **Export of test results:** Allows you to export data of selected appliances together with test results to other programs (MS Excel, MS Word).
- **PDF report:** Test Report can be transformed into PDF format.
- **Full built-in help files:** Integrated help menu contains detailed explanation of PC SW handling.
- **Automatic self-test record keeping (MI 3311 only):** Results of the CHECKBOX function can be automatically transferred to the PC and printed onto the test reports.
- **Plug & Play:** When connecting your meter to the PC it is automatically recognized by the software.

## PATLink PRO Plus

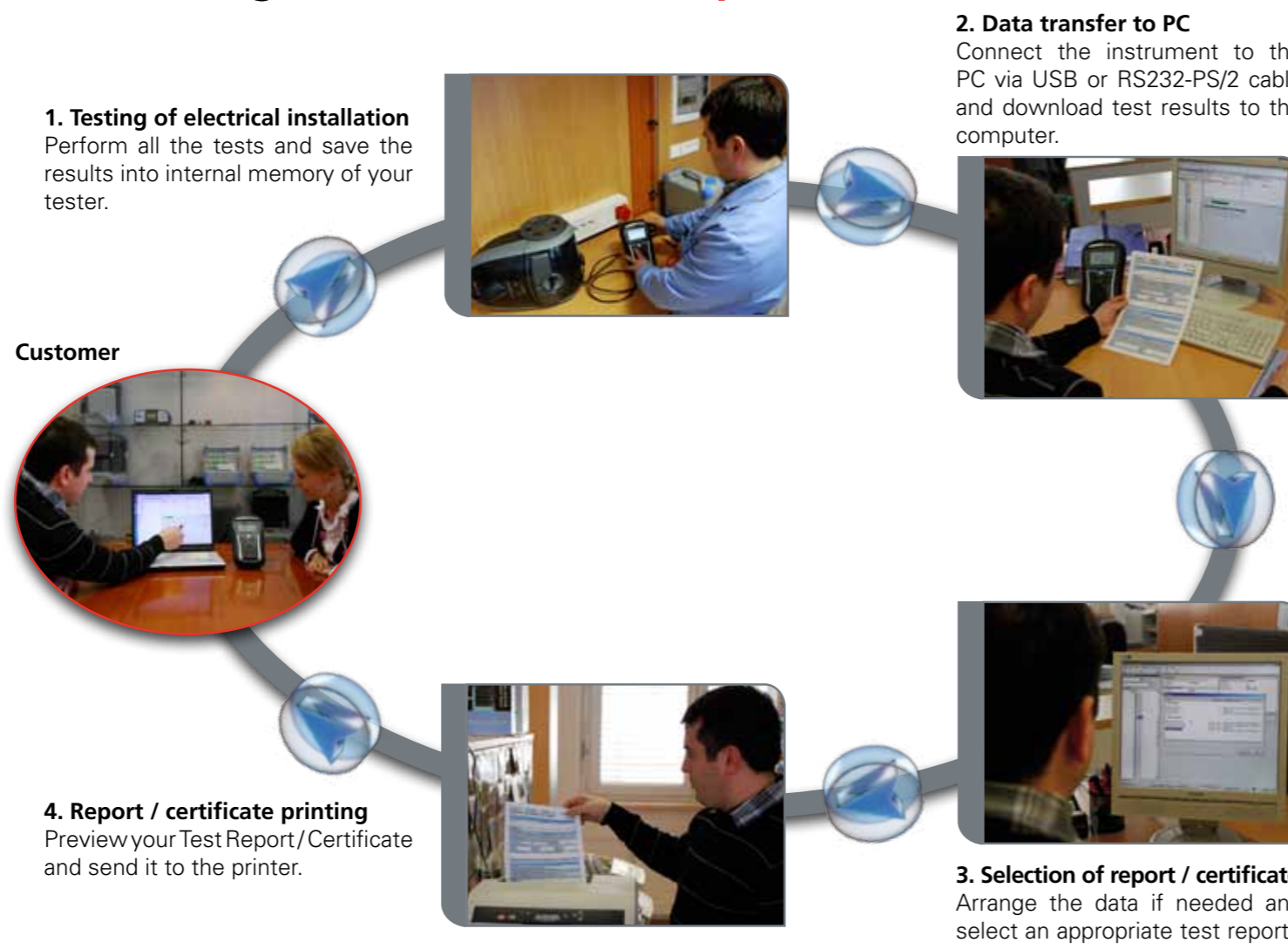
The PATLink PRO Plus builds on the functionality of the PATLink PRO software with extra features including appliance deterioration trend analysis, test data uploading (MI 3304, MI 3305 and MI 3321).



### KEY FEATURES:

- **Full data filtering:** All data can be filtered by different parameters: Retest Date, Test Date, Project, User, etc.
- **Icon style or table style:** Data can be represented in tree or table form.
- **Drag and drop:** The elements of the structure can be relocated and renamed.
- **Customer/Test engineer database:** It allows you to create your own database of customers fully equipped with all appropriate data.
- **Automatic PRO report generation:** Enables automatic generation of Test Report (standard or full detailed).
- **Company logo loading:** Load company logos into the software so that they can be printed on test reports.
- **Data Backup:** All downloaded data can be backed up to prevent the loss of valuable data for example in case of hard disk failure.
- **Appliance information editing:** Allows you to edit data, e.g. to set up Retest Date, Repair Code, add Comment, etc.
- **Export of test results:** Allows you to export data of selected appliances together with test results to other programs (MS Excel/Word).
- **PDF report:** Test Report can be transformed into PDF format.
- **Full built-in help files:** Integrated help menu contains detailed explanation of PC SW handling.
- **Automatic self-test record keeping (MI 3311 only):** Results of the CHECKBOX function can be automatically transferred to the PC and printed onto the test reports.
- **Plug & Play:** When connecting your meter to the PC it is automatically recognized by the software.
- **Upload data back to PAT tester (MI 3304, MI 3305 & MI 3321):** User can upload test results from the previous measurement session (e.g. from last year) so the same tests can be simply repeated and results of both measurements can be compared.
- **Structures upload:** The structure of test site can be created in advance on the PC and then simply uploaded to your tester (MI 3304, MI 3305 & MI 3321) if needed any deviations can be adjusted on the tester on site.
- **Trend analysis:** Enables to compare test results of the last and previous tests.
- **PATLink PRO PLUS professional reports:** The PRO Plus report displays results as the Pro version but enables you to edit the information before printing the report.

## From testing to certificate in 4 steps!



### The following Certificates for PRO are available:

- Full detailed PRO Electrical equipment test report
- METREL PAT PRO Electrical equipment test report

### The following Certificates for PRO Plus are available:

- METREL PRO Plus (Single) Electrical equipment test report
- METREL Full detailed PRO Electrical equipment test report
- METREL PAT PRO Plus Electrical equipment test report



## ORDERING INFORMATION:

- **A 1305** PC SW PATLink PRO with USB and RS232-PS/2 cable
- **A 1306** PC SW PATLink PRO Plus with USB and RS232-PS/2 cable
- **A 1203** Upgrade code PATLink PRO to PATLink PRO Plus

## PASSWORD PROTECTION:

PC SW **PATLink PRO** is password protected for the following instruments:

- MI 2140
- MI 2141
- MI 2142
- MI 3311

PC SW **PATLink PRO Plus** is password protected for all Metrel's PAT testers.

## COMPUTER REQUIREMENTS:

- **Operating System:** Windows 2000 SP4 / XP SP3 / Vista / Win7
- **RAM:**  
Windows 2000 min 128 MB  
Windows XP min 512MB  
Windows Vista and Win 7 min 2 GB
- **Available hard disk space:**  
**230 MB** (Metrel PATLink PRO and Microsoft SQL Server 2005 Express Database Engine)  
**280 MB** (x86), 610 MB (x64) (Microsoft .NET Framework 2.0 - if not already installed)

## Installation of PATLink PRO and PATLink PRO Plus

1. Insert a CD with the PC SW into the CD / DVD drive of your computer.
2. The software should automatically run. If this is not the case, open the contents of the CD and double click on the "METREL.exe" program file.
3. The initial welcome screen will appear, select the English language / UK Area / Type of instrument.



4. To install the software, select PATLink PRO.



5. The installation of the software will now begin, on the welcome screen select "Install" and follow the setup instructions.

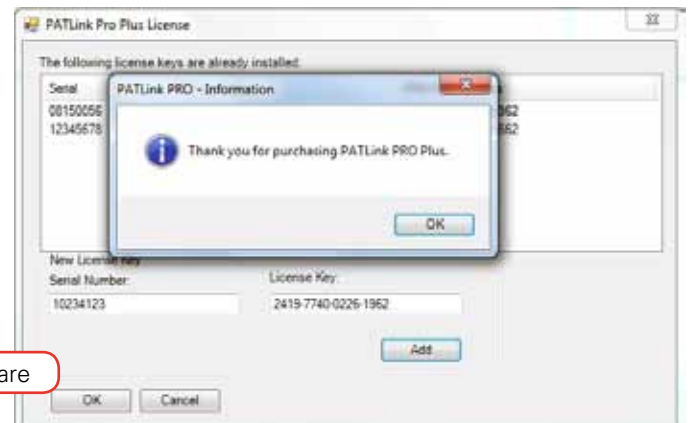
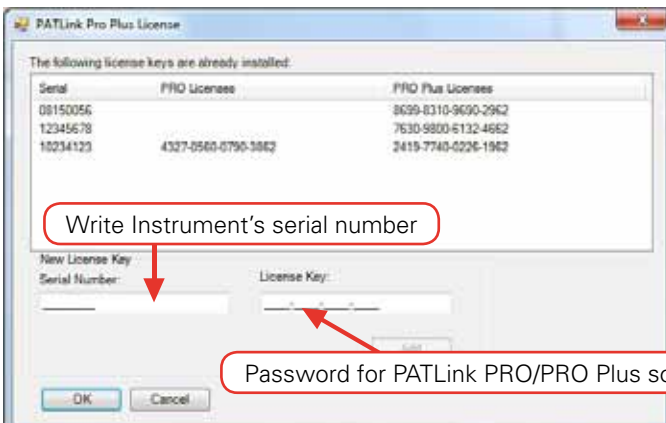


6. After completing the installation, confirm finishing the installation.



7. Start up the PATLink PRO software.

8. In toolbar menu select Help / License, PATLink PRO or PRO Plus License window will appear. Add the new password and confirm it by pressing OK. To close The PATLink PRO or PRO Plus License window press OK again.



9. Start working with PC software.

 **METREL**<sup>®</sup>  
Test and Measuring Equipment  
Metrel UK  
Unit 1, Hopton House, Ripley Drive,  
Normanton, West Yorkshire, WF6 1QT  
Tel.: 01924245000  
Web: www.metrel.co.uk  
E-mail: info@metrel.co.uk