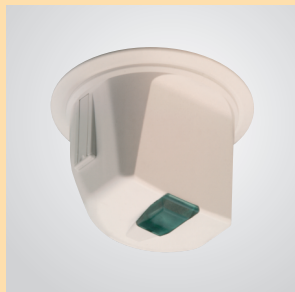




# Lighting Management System

## MID RANGE SERIES LIGHTSPOT

Honeywell



**M**id Range Series LightSpot is a high performance, directional presence detector with built-in photocell for use in almost any internal space. It was conceived to bridge the gap between the Standard Series LightSpot and the Long Range equipment. It is ideal for larger classrooms, conference rooms, longer storage aisles etc. It is a self-contained unit, making installation very simple and straight forward.



Advanced presence detection by microwave technology



Of delay in minutes following the last observed movement after which lights switch off



Passive photocell holds lights of when area becomes occupied in bright ambient conditions



Dual Sensitivity. Detectors are more sensitive to movement when lighting is on than when it is off thus eliminating nuisance switching in larger areas.



Detection pattern and range in metres under normal operating conditions

**Suitable areas for application – Corridors, Gangways, Walkways, Passages, large classrooms, conference rooms, storage aisles, etc.**

### K4032 / K4033

#### Mid Range LightSpot

Mid Range LightSpot utilises microwave technology and is capable of effective presence detection in rooms of up to 20m x 20m.

The unit is self-contained, featuring a movement detector, photocell and 10 Amp (load switching) element in one, easily deployed housing. The detector may be surface or semi-flush mounted

#### Detection Pattern

Mid Range LightSpots utilise microwave radar to monitor a space for movement. This involves transmitting a very low power microwave signal and examining the reflected signal for frequency variations called "Doppler shifts". The microwave system is extremely sensitive to small body movements and provides effective presence detection in rooms up to 20m x 20m. Please note that this extreme sensitivity makes it essential that the detector be installed on a rigid surface that will not itself be subject to movement or vibration. Please note also that microwave technology is not recommended for applications where there are large areas of metal, e.g. metal ceiling or floor tiles, as unpredictable sensitivity may result.

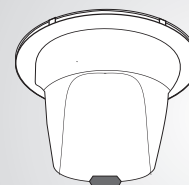
### Product code

K4032	Mid Range LightSpot with photocell - surface
K4033	Mid Range LightSpot with photocell - semi-flush
K4034	Wall-mounting Kit for K4032
K4051	Two-button Hand-held Controller

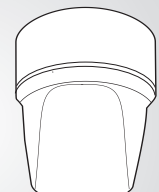
### Mounting options

- Semi-flush
- Surface

Superior performance, directionally adjustable, microwave presence detection for lighting control in applications up to 20m x 20m. Incorporates passive photocell.



K4033



K4032

### Adjustment controls

Available for commissioning purposes, these are accessed via the side door. The availability of two independent sensitivity controls makes the LightSpot supremely flexible in use.

ON Range is the normal range control which may be adjusted according to the needs of the space being monitored.

OFF Range sets the detector range once lights have been switched off and may, in some instances, require a lower setting. A good example is a library or storage aisle which requires a higher range when the aisle is occupied but a much lower range when the area becomes unoccupied so that traffic passing across the ends of an aisle will not activate the lights.

OFF Delay sets the time delay (after last detected movement) before lights are switched off. The off delay is adjustable up to 20 minutes. A set-up time of 10 seconds is provided to assist rapid commissioning.

Photocell: The LightSpot photocell observes the controlled space, not just ambient daylight, and takes account of all light contributions - even from adjacent zones. Photocell operation is extremely user-friendly; although the photocell takes into account light from the controlled luminaires themselves, it is configured never to switch lights off when anyone is present. It will, however hold lights off as people enter an already adequately lit area and bring lights on if lighting levels fall in an occupied area.

### Potential Savings - Commercial Office

#### Energy savings from lighting

- Private Office - up to 15%\*
- Open Plan Office - up to 30%\*
- Corridors - up to 80%\*
- Conference room - up to 65%\*

\*Department of Environment - Energy Efficiency Office

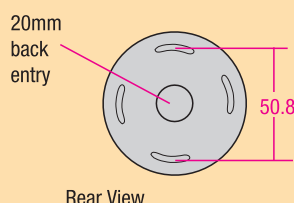
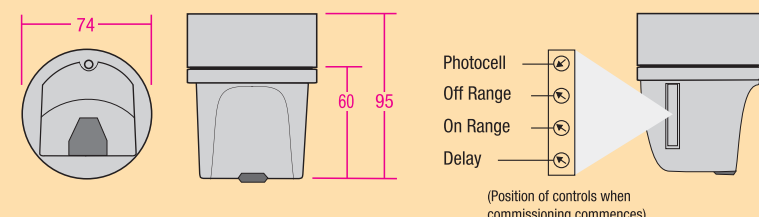


# Lighting Management System

## MID RANGE SERIES LIGHTSPOT

Honeywell

### Technical Data



#### K4032 - Surface version

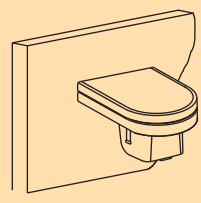
The back-box can be secured directly to a hard surface or to a conduit stop end box.

#### K4033 - Semi-flush version

Use a hole saw to drill a 76mm hole into the ceiling tile. The flush ring is designed to clamp the tile between its two halves.

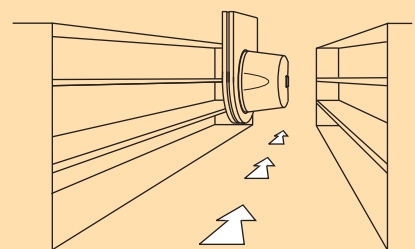
OPERATING VOLTAGE	:	230V 50Hz (UK & Europe)
SWITCH CAPACITY	:	10 Amps max
Incandescent lamps	:	1500W max (at 230V)
MAX RECOMMENDED MOUNTING HEIGHT	:	3.5m
RANGE	:	Adjustable up to 20m
OFF DELAY	:	10 seconds to 20 minutes
WEIGHT	:	250g
COLOUR	:	White
HOUSING MATERIAL	:	Flame-retardant ABS
IP RATING	:	43 when ceiling mounted 4X when wall mounted

### Examples of WMK application



#### Horizontal installation

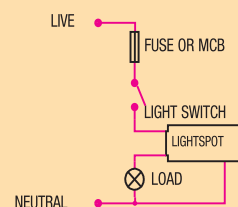
For general applications where ceiling mounting is not convenient and wide angle coverage in the horizontal plane is desirable. The WMK can be screwed to a hard surface or the lid of a conduit stop-end box.



#### Vertical installation

Use this method of mounting for racking aisle applications and where adjustment in the vertical plane will give improved control over the precise point of entry detection.

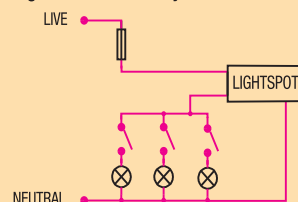
### Electrical connection diagram



#### Controlling a load with one switch circuit.



#### Controlling two or three way circuits.



#### Controlling a load with several switch circuits.

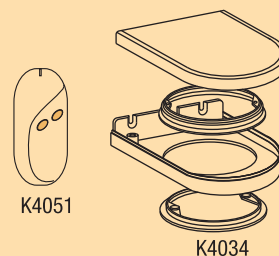
#### Notes

- Any number of LightSpot detectors may be connected in parallel.
- A Mid Range LightSpot may be configured for volt-free output by omission of an external wire link.
- Do not mount within 0.5m of a luminaire.

### Ancillary Items

K4034 Wall-mounting kit for K4032 (supplied assembled)

K4051 Two-button Hand-held



### Honeywell Electrical Devices and systems India Limited

Regd Off: 'Crescendo', 995-B, Second Avenue, Annanagar, Chennai - 600 040, India. Tel: +91-44-26161234. Fax: 26161235 E-mail: mkteam@honeywell.com Website: www.mkelectricindia.com

◆BANGALORE: Door No.301, 3rd Floor, Prestige Kada, 22, Richmond Road, Bangalore - 560 025. Tel: 080 64539831 Fax: 080 22113690. E-mail: mkbangalore@honeywell.com ◆CHENNAI: 'Crescendo', 995-B, Second Avenue, Chennai - 600 040. Tel: +91-44-66326789. Fax: +91-44-26161235. E-mail: mkchennai@honeywell.com ◆HYDERABAD: Surana House, #6-3-569/1, 4th Floor, Erramanzil 'x' Roads, Khairatabad, Hyderabad - 500 082. Tel: +91-40-66410911. Fax: +91-40-66410930. E-mail: mkhyderabad@honeywell.com ◆KOCHI: 41/2553, 2-A 2nd Floor, Metro Palace, Opp. Town Railway Station, Kochi - 682 018. Tel: +91-484-2396806. Tel / Fax: +91-484-2394732. E-mail: mkkochi@honeywell.com ◆KOLKATA: Matrix Tower, 4th Floor, Room No. 403, Sector - V, Salt Lake, Kolkata - 700 091. Tel: +91-33-64566170. Mobile: +91-9433057205. E-mail: mkkolkata@honeywell.com ◆MUMBAI: Eco-elite Building, 2nd floor, Marol Maroshi Road, Marol, Next to Zakaria, Industrial Estate, Andheri (E), Mumbai - 400 059. Tel: +91-22-6765068/81. Fax: +91-22-67650682. E-mail: mkmumbai@honeywell.com ◆NEW DELHI: Plot No. 2-A, Corner Market, Malviya Nagar, New Delhi - 110 017. Tel: +91-11-64737433/34. Fax: +91-11-26673102. E-mail: mkdelhi@honeywell.com