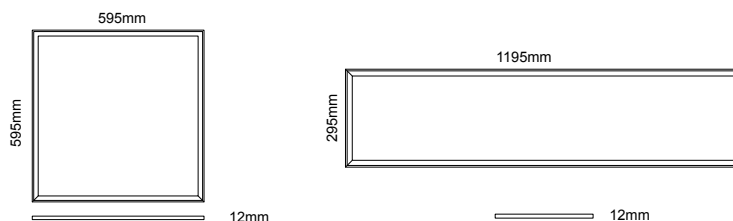


## LED Panel SE Premium



### Warning:

1. Before starting of installation please read this leaflet carefully and keeps it for future reference.
2. When installation, please conforms to the instruction of equipment and installed by professionals.
3. Make sure correct voltage applied before use and keep away from heat and vibration source.

### Please note:

Suitable LED Driver(not included-purchase separately)

- 394810 LED Driver ikke dimbar 36W / Non-dimmable
- 394800 LED Driver Dimmebar 36W / Dimmable Trailing edge
- 394820 LED Driver Dimmebar 36W 1-10V / Dimmable
- 394830 LED Driver Dimmebar 36W DALI / Dimmable
- 394815 LED Driver ikke dimbar 54W / Non-dimmable
- 395400 LED Driver Dimmebar 54W / Dimmable Trailing edge

Available Mounting Hardware(not included-purchase separately)

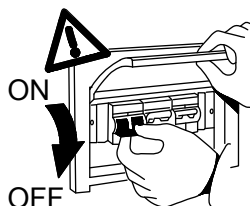
- 100014 Festebrakett / Ceiling Bracket for surface mounting
- 100024 Ramme for utenpåliggende montering / Mounting frame for surface mounting (595x595)
- 100034 Ramme for utenpåliggende montering / Mounting frame for surface mounting (1195x295)
- 110014 Wireoppheng / Wire kit for suspended mounting

## I. Main parameter

Prodcut	103604	103614	113614	123614	105414	115414
Rated voltage	180-240V 50Hz	180-240V 50Hz	180-240V 50Hz	180-240V 50Hz	180-240V 50Hz	180-240V 50Hz
Rated power	36W	36W	36W	36W	54W	54W
System power	40W	40W	40W	40W	58W	58W
LED	SMD 2835	SMD 2835	SMD 2835	SMD 2835	SMD 2835	SMD 2835
LED Driver	Constant Current 900mA	Constant Current 900mA	Constant Current 900mA	Constant Current 900mA	Constant Current 1400mA	Constant Current 1400mA
Color Temperature	3000K	4000K	3000K	4000K	4000K	3000K
Protection	CLASS II	CLASS II	CLASS II	CLASS II	CLASS II	CLASS II
Beam Angle	120°	120°	120°	120°	120°	120°
Product size	595×595×12mm	595×595×12mm	1195×295×12mm	1195×295×12mm	595×595×12mm	595×595×12mm
Weight	4200g	4200g	4500g	4500g	4200g	4200g

## II. Installation direction maintenance

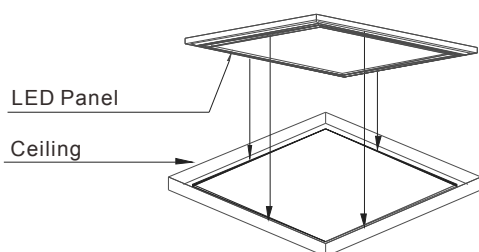
1. First, please make sure all parts are ready when open the box and prepare the installation tools the lighting needs.
2. Second, should turn off the power.



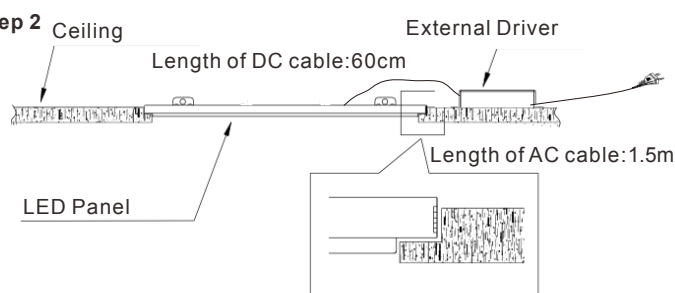
## III. Installation steps(please see the drawings)

### A.Built-in Type

#### Step 1

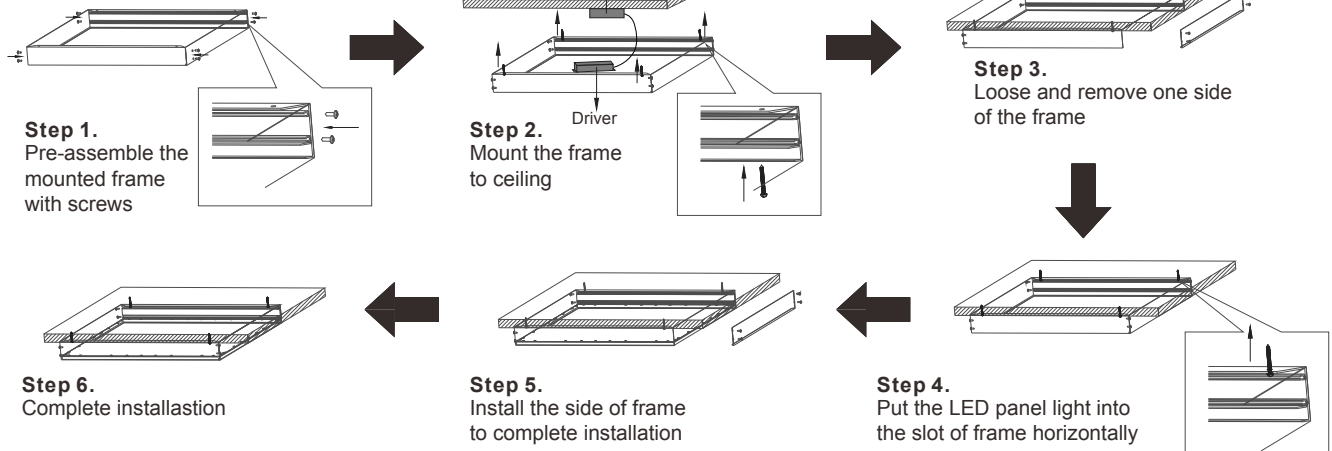


#### Step 2

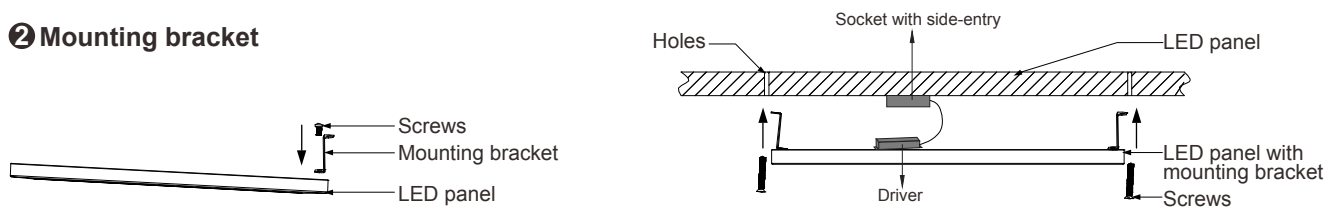


## B. Mounted Type

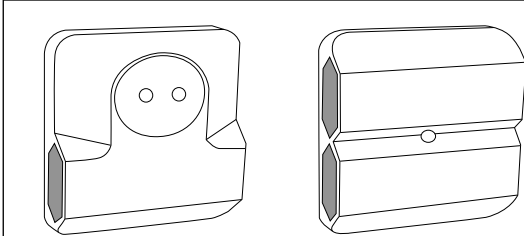
### ① Mounting frame



### ② Mounting bracket



Following sockets are recommended to use when installing with mounting frame or mounting bracket.  
El. nr. 15 021 72 2xEuro and 1xShcuko  
El. nr. 15 021 84 4xEuro



## C. Suspended Type

