

Select your language

- [German](#)
- [English](#)
- [Spanish](#)
- [French](#)
- [Dutch](#)
- [Italian](#)
- [Polish](#)
- [Czech](#)
- [Russian](#)
- [Norwegian Bokmål](#)

Worldwide English



Powering Business Worldwide

NZM1-XTVDV - Door coupling rotary handle, lockable on the handle, size 1



260172 NZM1-XTVDV

[Overview](#) [Specifications](#) [Resources](#)



260172 NZM1-XTVDV

Door coupling rotary handle, lockable on the handle, size 1

EL-Nummer (Norway)

4315550

Optional accessories for circuit-breaker series NZM offers a comprehensive portfolio of application possibilities for worldwide use. Modular functional groups make mounting flexible and simple. Note: Complete including rotary drive and coupling parts. External warning plate/designation label can be clipped on. Standard, black/grey. Lockable on handle and switch using up to 3 padlocks. Can be locked in 0 position, with adequate modification also in I position. Lockable on switch in 0 position. With door interlock. Can be used for: NZM1(-4), FN1(-4), N(S)1(-4)

- [Delivery program](#)

- [Design verification as per IEC/EN 61439](#)

- [Technical data ETIM 7.0](#)

- [Approvals](#)

- [Dimensions](#)

Delivery program

Product range

Accessories

Accessories

Door coupling rotary handle

Standard/Approval

UL/CSA, IEC

Construction size

NZM1

Description

Door coupling rotary handle for operating the switch through a closed control panel door

Function

Standard, black/grey

Protection class

IP66

UL/CSA Type 4X, Type 12

Locking facility

lockable on the handle on the switch using up to 3 padlocks

Modifiable on handle in I position as well

With door interlock

Door interlock

Not defeated in the locked OFF and ON positions

Can be modified in the unlocked ON position

Can be modified such that it can be defeated from the outside using a screw driver

Door can be opened in OFF

Project planning information

External warning plate/designation label can be clipped on.

Complete including rotary drive and coupling parts

Extension shaft additionally required.

For use with

NZM1(-4), FN1(-4), N(S)1(-4)

lockable

double

Notes

Circuit-breaker can also be installed in a lying position 90 ° left/right, with the handle still in the same position.

Design verification as per IEC/EN 61439

IEC/EN 61439 design verification

10.2 Strength of materials and parts 10.2.2 Corrosion resistance

Meets the product standard's requirements.

10.2 Strength of materials and parts 10.2.3.1 Verification of thermal stability of enclosures

Meets the product standard's requirements.

10.2 Strength of materials and parts 10.2.3.2 Verification of resistance of insulating materials to normal heat

Meets the product standard's requirements.

10.2 Strength of materials and parts 10.2.3.3 Verification of resistance of insulating materials to abnormal heat and fire due to internal electric effects

Meets the product standard's requirements.

10.2 Strength of materials and parts 10.2.4 Resistance to ultra-violet (UV) radiation

Meets the product standard's requirements.

10.2 Strength of materials and parts 10.2.5 Lifting

Does not apply, since the entire switchgear needs to be evaluated.

10.2 Strength of materials and parts 10.2.6 Mechanical impact

Does not apply, since the entire switchgear needs to be evaluated.

10.2 Strength of materials and parts 10.2.7 Inscriptions

Meets the product standard's requirements.

10.3 Degree of protection of ASSEMBLIES

Does not apply, since the entire switchgear needs to be evaluated.

10.4 Clearances and creepage distances

Meets the product standard's requirements.

10.5 Protection against electric shock

Does not apply, since the entire switchgear needs to be evaluated.

10.6 Incorporation of switching devices and components

Does not apply, since the entire switchgear needs to be evaluated.

10.7 Internal electrical circuits and connections

Is the panel builder's responsibility.

10.8 Connections for external conductors

Is the panel builder's responsibility.

10.9 Insulation properties 10.9.2 Power-frequency electric strength

Is the panel builder's responsibility.

10.9 Insulation properties 10.9.3 Impulse withstand voltage

Is the panel builder's responsibility.

10.9 Insulation properties 10.9.4 Testing of enclosures made of insulating material

Is the panel builder's responsibility.

10.10 Temperature rise

The panel builder is responsible for the temperature rise calculation. Eaton will provide heat dissipation data for the devices.

10.11 Short-circuit rating

Is the panel builder's responsibility. The specifications for the switchgear must be observed.

10.12 Electromagnetic compatibility

Is the panel builder's responsibility. The specifications for the switchgear must be observed.

10.13 Mechanical function

The device meets the requirements, provided the information in the instruction leaflet (IL) is observed.

Technical data ETIM 7.0

Low-voltage industrial components (EG000017) / Handle for power circuit breaker (EC000229)

Electric engineering, automation, process control engineering / Low-voltage switch technology / Circuit breaker (LV < 1 kV) / Handle for switch devices (ec1@ss10.0.1-27-37-04-14 [AKF012014])

Lockable

Yes

Colour

Black

Suitable for emergency stop

No

With extension shaft

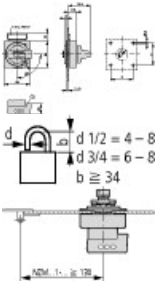
No

Suitable for power circuit breaker
Yes
Suitable for switch disconnector
Yes

Approvals

Product Standards
UL489; CSA-C22.2 No. 5-09; IEC60947, CE marking
UL File No.
E140305
UL Category Control No.
DIHS
CSA File No.
022086
CSA Class No.
1437-01
North America Certification
UL listed, CSA certified
Degree of Protection
IEC: IP66, UL/CSA Type 4X, 12

Dimensions



Minimum door coupling rotary handle clearance from door pivot point

CAD data

- [Product-specific CAD data](#)
(Web)
- [3D Preview](#)
(Web)

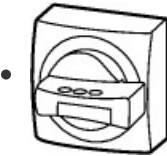
DWG files

- [DA-CD-nzm1_xtvd](#)
File
(Web)

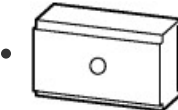
Step files

- [DA-CS-nzm1_xtvd](#)
File
(Web)

3D drawing



[1231518](#)
Line drawing
Door coupling rotary handle



[1231699](#)

Line drawing
Coupling part for door-coupling rotary handle

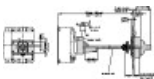
Product photo



1230PIC-681

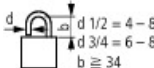
Photo

Dimensions single product



1230DIM-421

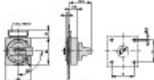
Line drawing



123X196

Line drawing

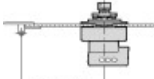
Padlock



123X480

Line drawing

Door coupling rotary handle



123X558

Line drawing

Minimum door coupling rotary handle clearance from door pivot point

Instruction Leaflet

- [NZM1,2 XTVDKL \(IL01203005Z\)](#)

Asset

IL01203005Z

(PDF, 03/21, Language independent)

Download-Center

- [Download-Center \(this item\)](#)
Eaton EMEA Download-Center - download data for this item
- [Download-Center](#)
Eaton EMEA Download-Center



[Generate data sheet in PDF format](#)



[Generate data sheet in Excel format](#)



[Write a comment](#)

[Imprint](#) [Privacy Policy](#) [Legal Disclaimer](#) [Terms and Conditions](#)

© 2022 by Eaton Industries GmbH