

Select your language

- [German](#)
- [English](#)
- [Spanish](#)
- [French](#)
- [Dutch](#)
- [Italian](#)
- [Polish](#)
- [Czech](#)
- [Russian](#)
- [Norwegian Bokmål](#)

Worldwide English



NZM2-XHB - Main switch assembly kit, handle black, size 2



266627 NZM2-XHB

[Overview](#) [Specifications](#) [Resources](#)



266627 NZM2-XHB

Main switch assembly kit, handle black, size 2

EL-Nummer (Norway)

4315576

Optional accessories for circuit-breaker series NZM offers a comprehensive portfolio of application possibilities for worldwide use. Modular functional groups make mounting flexible and simple. Note: Door coupling rotary handle with rotary drive. Extension shaft NZM...-XV4. External warning plate/markings plate in German/English, black and yellow flash. External warning plate/markings plate can be clipped on. For enhanced busbar tag shroud on the incomer side, please order IP2X protection against contact with a finger. With black door coupling rotary handle. Lockable on the 0 position on the handle using up to 3 padlocks, can also be modified in I position. With door interlock. Can be used for: NZM2(-4), FN2(-4), N(NO)2(-4)

- [Delivery program](#)

Design verification as per
IEC/EN 61439

- [Technical data ETIM 7.0](#)

- [Approvals](#)

- [Dimensions](#)

Delivery program

Equipment supplied

Door coupling rotary handle with rotary drive

NZM...-XV4 extension shaft

External warning plate/markings plate in German/English

Black and yellow lightning symbol

Product range

Accessories

Accessories

Main switch assembly kit

Standard/Approval

UL/CSA, IEC

Construction size

NZM2

Description

Kit for use as a main switch

Function

With black door coupling rotary handle

Protection class

IP66

UL/CSA Type 4X, Type 12

Locking facility

lockable on the 0 position on the handle using up to 3 padlocks

can also be modified in I position

With door interlock

Door interlock

Door interlock on OFF with max. 3 padlocks

can also be modified in I position

After the door interlock is activated, must not be opened while on ON or TRIP. Must only be opened on OFF

Can be modified such that it can be defeated from the outside using a screw driver
 Not defeated in the locked OFF position.
 Can only be switched ON when the door is closed
 Project planning information
 External warning plate/designation label can be clipped on.
 For enhanced busbar tag shroud on the incomer side, please order IP2X protection against contact with a finger.
 For use with
 NZM2(-4)
 FN2(-4), N(S)2(-4)

Design verification as per IEC/EN 61439

IEC/EN 61439 design verification

10.2 Strength of materials and parts 10.2.2 Corrosion resistance

Meets the product standard's requirements.

10.2 Strength of materials and parts 10.2.3.1 Verification of thermal stability of enclosures

Meets the product standard's requirements.

10.2 Strength of materials and parts 10.2.3.2 Verification of resistance of insulating materials to normal heat

Meets the product standard's requirements.

10.2 Strength of materials and parts 10.2.3.3 Verification of resistance of insulating materials to abnormal heat and fire due to internal electric effects

Meets the product standard's requirements.

10.2 Strength of materials and parts 10.2.4 Resistance to ultra-violet (UV) radiation

Meets the product standard's requirements.

10.2 Strength of materials and parts 10.2.5 Lifting

Does not apply, since the entire switchgear needs to be evaluated.

10.2 Strength of materials and parts 10.2.6 Mechanical impact

Does not apply, since the entire switchgear needs to be evaluated.

10.2 Strength of materials and parts 10.2.7 Inscriptions

Meets the product standard's requirements.

10.3 Degree of protection of ASSEMBLIES

Does not apply, since the entire switchgear needs to be evaluated.

10.4 Clearances and creepage distances

Meets the product standard's requirements.

10.5 Protection against electric shock

Does not apply, since the entire switchgear needs to be evaluated.

10.6 Incorporation of switching devices and components

Does not apply, since the entire switchgear needs to be evaluated.

10.7 Internal electrical circuits and connections

Is the panel builder's responsibility.

10.8 Connections for external conductors

Is the panel builder's responsibility.

10.9 Insulation properties 10.9.2 Power-frequency electric strength

Is the panel builder's responsibility.

10.9 Insulation properties 10.9.3 Impulse withstand voltage

Is the panel builder's responsibility.

10.9 Insulation properties 10.9.4 Testing of enclosures made of insulating material

Is the panel builder's responsibility.

10.10 Temperature rise

The panel builder is responsible for the temperature rise calculation. Eaton will provide heat dissipation data for the devices.

10.11 Short-circuit rating

Is the panel builder's responsibility. The specifications for the switchgear must be observed.

10.12 Electromagnetic compatibility

Is the panel builder's responsibility. The specifications for the switchgear must be observed.

10.13 Mechanical function

The device meets the requirements, provided the information in the instruction leaflet (IL) is observed.

Technical data ETIM 7.0

Low-voltage industrial components (EG000017) / Handle for power circuit breaker (EC000229)

Electric engineering, automation, process control engineering / Low-voltage switch technology / Circuit breaker (LV < 1 kV) / Handle for switch devices (ecl@ss10.0.1-27-37-04-14 [AKF012014])

Lockable

Yes

Colour

Black

Suitable for emergency stop

No

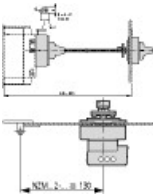
With extension shaft

Yes
Suitable for power circuit breaker
Yes
Suitable for switch disconnector
Yes

Approvals

Product Standards
UL489; CSA-C22.2 No. 5-09; IEC60947, CE marking
UL File No.
E140305
UL Category Control No.
DIHS
CSA File No.
022086
CSA Class No.
1437-01
North America Certification
UL listed, CSA certified
Degree of Protection
IEC: IP66, UL/CSA Type 4X, 12

Dimensions



Minimum door coupling rotary handle clearance from door pivot point

CAD data

- [Product-specific CAD data](#)
(Web)
- [3D Preview](#)
(Web)

DWG files

- [DA-CD-nzm2_xhb](#)
File
(Web)

Step files

- [DA-CS-nzm2_xhb](#)
File
(Web)

3D drawing



1231676

Line drawing
Main switch assembly kit

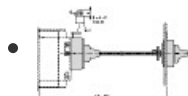
Product photo



1230PIC-681

Photo

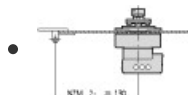
Dimensions single product



1230DIM-228

Line drawing

Main switch assembly kit with additional rotary handle: NZM2..., NZM...



123X500

Line drawing

Minimum door coupling rotary handle clearance from door pivot point

Instruction Leaflet

- [NZM1,2 XTVDKL \(IL01203005Z\)](#)

Asset

IL01203005Z

(PDF, 03/21, Language independent)

Download-Center

- [Download-Center \(this item\)](#)
Eaton EMEA Download-Center - download data for this item
- [Download-Center](#)
Eaton EMEA Download-Center



[Generate data sheet in PDF format](#)



[Generate data sheet in Excel format](#)



[Write a comment](#)

[Imprint](#) [Privacy Policy](#) [Legal Disclaimer](#) [Terms and Conditions](#)

© 2022 by Eaton Industries GmbH

