

Select your language

- [German](#)
- [English](#)
- [Spanish](#)
- [French](#)
- [Dutch](#)
- [Italian](#)
- [Polish](#)
- [Czech](#)
- [Russian](#)
- [Norwegian Bokmål](#)

Worldwide English



Powering Business Worldwide

NZM2-XHBR - Main switch assembly kit, handle red, size 2



266633 NZM2-XHBR

[Overview](#) [Specifications](#) [Resources](#)



## 266633 NZM2-XHBR

Main switch assembly kit, handle red, size 2

EL-Nummer (Norway)

4315579

Optional accessories for circuit-breaker series NZM offers a comprehensive portfolio of application possibilities for worldwide use. Modular functional groups make mounting flexible and simple. Note: Door coupling rotary handle with rotary drive. Extension shaft NZM...-XV4. External warning plate/markings plate in German/English, black and yellow flash. External warning plate/markings plate can be clipped on. For enhanced busbar tag shroud on the incomer side, please order IP2X protection against contact with a finger. With red door coupling rotary handle for use of switch as emergency switching off device to IEC/EN 60204-1, VDE 0113 part 1. Lockable on the 0 position on the handle using up to 3 padlocks. Lockable door and locking facility on switch in 0 position. Can be used for: NZM2(-4), FN2(-4), N(NO)2(-4)

- [Delivery program](#)

- [Design verification as per IEC/EN 61439](#)

- [Technical data ETIM 7.0](#)

- [Approvals](#)

- [Dimensions](#)

### Delivery program

Equipment supplied

Door coupling rotary handle with rotary drive

NZM...-XV4 extension shaft

External warning plate/markings plate in German/English

Black and yellow lightning symbol

Product range

Accessories

Accessories

Main switch assembly kit

Standard/Approval

UL/CSA, IEC

Construction size

NZM2

Description

Kit for use as a main switch

Function

With red door coupling rotary handle for use of switch as emergency switching off device to IEC/EN 60204-1, VDE 0113 part 1

Protection class

IP66

UL/CSA Type 4X, Type 12

Locking facility

lockable on the 0 position on the handle using up to 3 padlocks

With door interlock

lockable on the switch in the 0 position

Door interlock  
 Door interlock on OFF with max. 3 padlocks  
 After the door interlock is activated, must not be opened while on ON or TRIP. Must only be opened on OFF  
 Can be modified such that it can be defeated from the outside using a screw driver  
 Not defeated in the locked OFF position.  
 Can only be switched ON when the door is closed  
 Project planning information  
 External warning plate/designation label can be clipped on.  
 For enhanced busbar tag shroud on the incomm side, please order IP2X protection against contact with a finger.  
 For use with  
 NZM2(-4)  
 PN2(-4), N(S)2(-4)

## Design verification as per IEC/EN 61439

IEC/EN 61439 design verification

10.2 Strength of materials and parts 10.2.2 Corrosion resistance

Meets the product standard's requirements.

10.2 Strength of materials and parts 10.2.3.1 Verification of thermal stability of enclosures

Meets the product standard's requirements.

10.2 Strength of materials and parts 10.2.3.2 Verification of resistance of insulating materials to normal heat

Meets the product standard's requirements.

10.2 Strength of materials and parts 10.2.3.3 Verification of resistance of insulating materials to abnormal heat and fire due to internal electric effects

Meets the product standard's requirements.

10.2 Strength of materials and parts 10.2.4 Resistance to ultra-violet (UV) radiation

Meets the product standard's requirements.

10.2 Strength of materials and parts 10.2.5 Lifting

Does not apply, since the entire switchgear needs to be evaluated.

10.2 Strength of materials and parts 10.2.6 Mechanical impact

Does not apply, since the entire switchgear needs to be evaluated.

10.2 Strength of materials and parts 10.2.7 Inscriptions

Meets the product standard's requirements.

10.3 Degree of protection of ASSEMBLIES

Does not apply, since the entire switchgear needs to be evaluated.

10.4 Clearances and creepage distances

Meets the product standard's requirements.

10.5 Protection against electric shock

Does not apply, since the entire switchgear needs to be evaluated.

10.6 Incorporation of switching devices and components

Does not apply, since the entire switchgear needs to be evaluated.

10.7 Internal electrical circuits and connections

Is the panel builder's responsibility.

10.8 Connections for external conductors

Is the panel builder's responsibility.

10.9 Insulation properties 10.9.2 Power-frequency electric strength

Is the panel builder's responsibility.

10.9 Insulation properties 10.9.3 Impulse withstand voltage

Is the panel builder's responsibility.

10.9 Insulation properties 10.9.4 Testing of enclosures made of insulating material

Is the panel builder's responsibility.

10.10 Temperature rise

The panel builder is responsible for the temperature rise calculation. Eaton will provide heat dissipation data for the devices.

10.11 Short-circuit rating

Is the panel builder's responsibility. The specifications for the switchgear must be observed.

10.12 Electromagnetic compatibility

Is the panel builder's responsibility. The specifications for the switchgear must be observed.

10.13 Mechanical function

The device meets the requirements, provided the information in the instruction leaflet (IL) is observed.

## Technical data ETIM 7.0

Low-voltage industrial components (EG000017) / Handle for power circuit breaker (EC000229)

Electric engineering, automation, process control engineering / Low-voltage switch technology / Circuit breaker (LV < 1 kV) / Handle for switch devices (ecl@ss10.0.1-27-37-04-14 [AKF012014])

Lockable

Yes

Colour

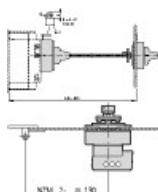
Red

Suitable for emergency stop  
Yes  
With extension shaft  
Yes  
Suitable for power circuit breaker  
Yes  
Suitable for switch disconnecter  
Yes

## Approvals

Product Standards  
UL489; CSA-C22.2 No. 5-09; IEC60947, CE marking  
UL File No.  
E140305  
UL Category Control No.  
DIHS  
CSA File No.  
022086  
CSA Class No.  
1437-01  
North America Certification  
UL listed, CSA certified  
Degree of Protection  
IEC: IP66, UL/CSA Type 4X, 12

## Dimensions



Minimum door coupling rotary handle clearance from door pivot point

## CAD data

- [Product-specific CAD data](#)  
(Web)
- [3D Preview](#)  
(Web)

## DWG files

- [DA-CD-nzm2\\_xhb](#)  
File  
(Web)

## Step files

- [DA-CS-nzm2\\_xhb](#)  
File  
(Web)

## 3D drawing



1231676

Line drawing

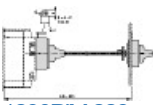
Main switch assembly kit

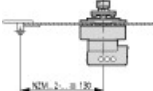
## Product photo

- 

1230PIC-1003  
Photo

## Dimensions single product

- 

1230DIM-228  
Line drawing  
Main switch assembly kit with additional rotary handle: NZM2..., NZM...
- 

123X500  
Line drawing  
Minimum door coupling rotary handle clearance from door pivot point

## Instruction Leaflet

- NZM1,2 XTVDKL (IL01203005Z)  
Asset  
IL01203005Z  
(PDF, 03/21, Language independent)

## Download-Center

- [Download-Center \(this item\)](#)  
Eaton EMEA Download-Center - download data for this item
- [Download-Center](#)  
Eaton EMEA Download-Center

 [Generate data sheet in PDF format](#)

 [Generate data sheet in Excel format](#)

 [Write a comment](#)

[Imprint](#) [Privacy Policy](#) [Legal Disclaimer](#) [Terms and Conditions](#)

© 2022 by Eaton Industries GmbH