

**Door sealing frame, IP41, AV**

**Part no.** IZMX-DEG16-W-1  
**Catalog No.** 184138  
**Alternate Catalog No.** 65A2530G01  
**EL-Nummer (Norway)** 4398501

**Delivery program**

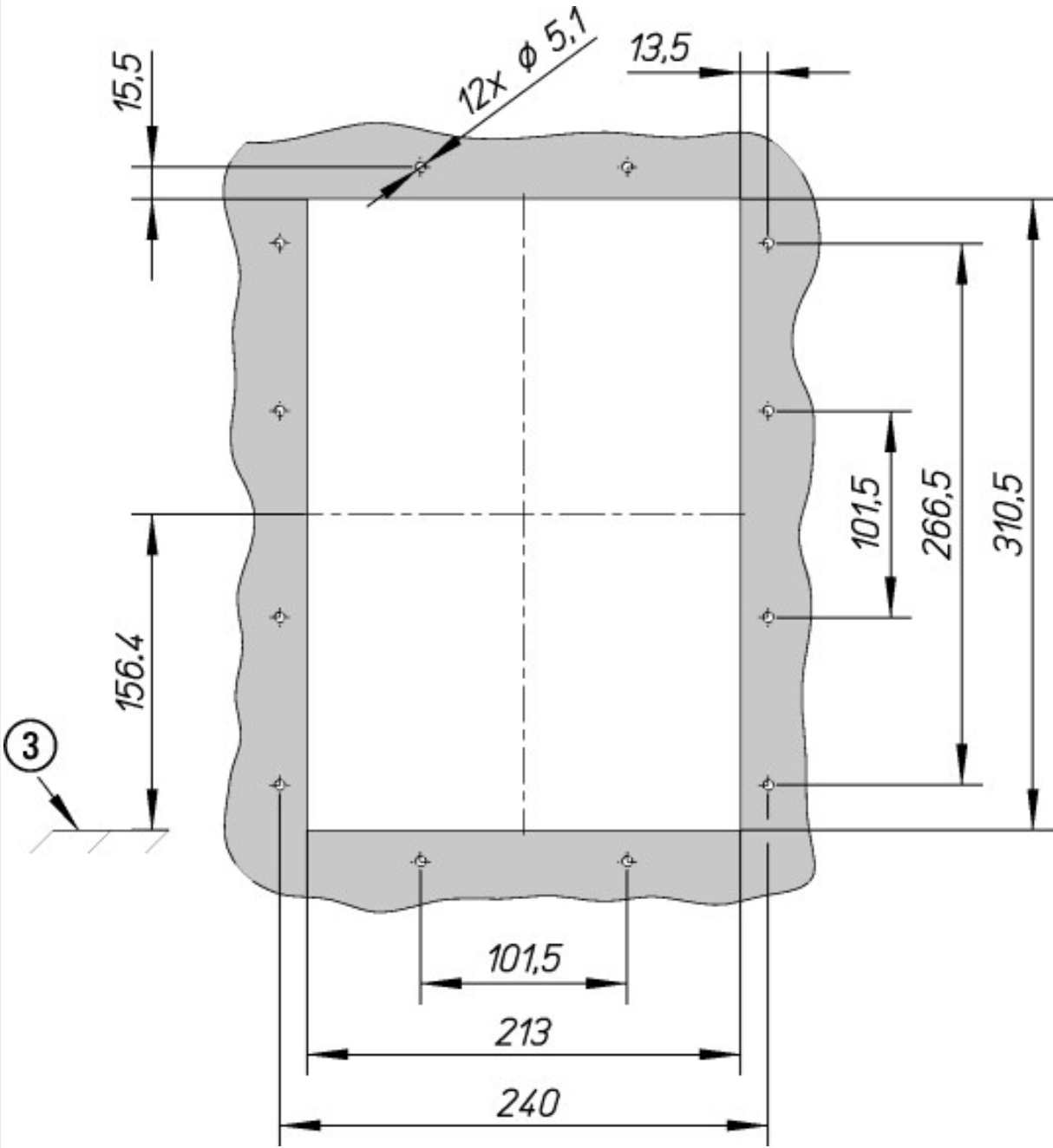
Product range		Accessories
Accessories		Degree of protection IP31
Accessories		Spare door seal
		Replacement door escutcheon with gasket IP31
For use with		IZMX16...W INX16...W
Instructions		Spare part; supplied as standard with every breaker.

**Design verification as per IEC/EN 61439**

Technical data for design verification		
Operating ambient temperature min.	°C	-25
Operating ambient temperature max.	°C	70

**Technical data ETIM 7.0**

Low-voltage industrial components (EG000017) / Accessories for low-voltage switch technology (EC002498)		
Electric engineering, automation, process control engineering / Low-voltage switch technology / Component for low-voltage switching technology / Component for low-voltage switch technology (accessories) (ecl@ss10.0.1-27-37-13-92 [AKN570013])		
Type of accessory		Other



③ Top edge mounting floor of the Circuit Breaker