



Door sealing frame, IP41, fixed mounted design

Part no. IZMX-DEG16-F-1
Catalog No. 184136
Alternate Catalog No. 65A2530G02
EL-Nummer (Norway) 4398499

Delivery program

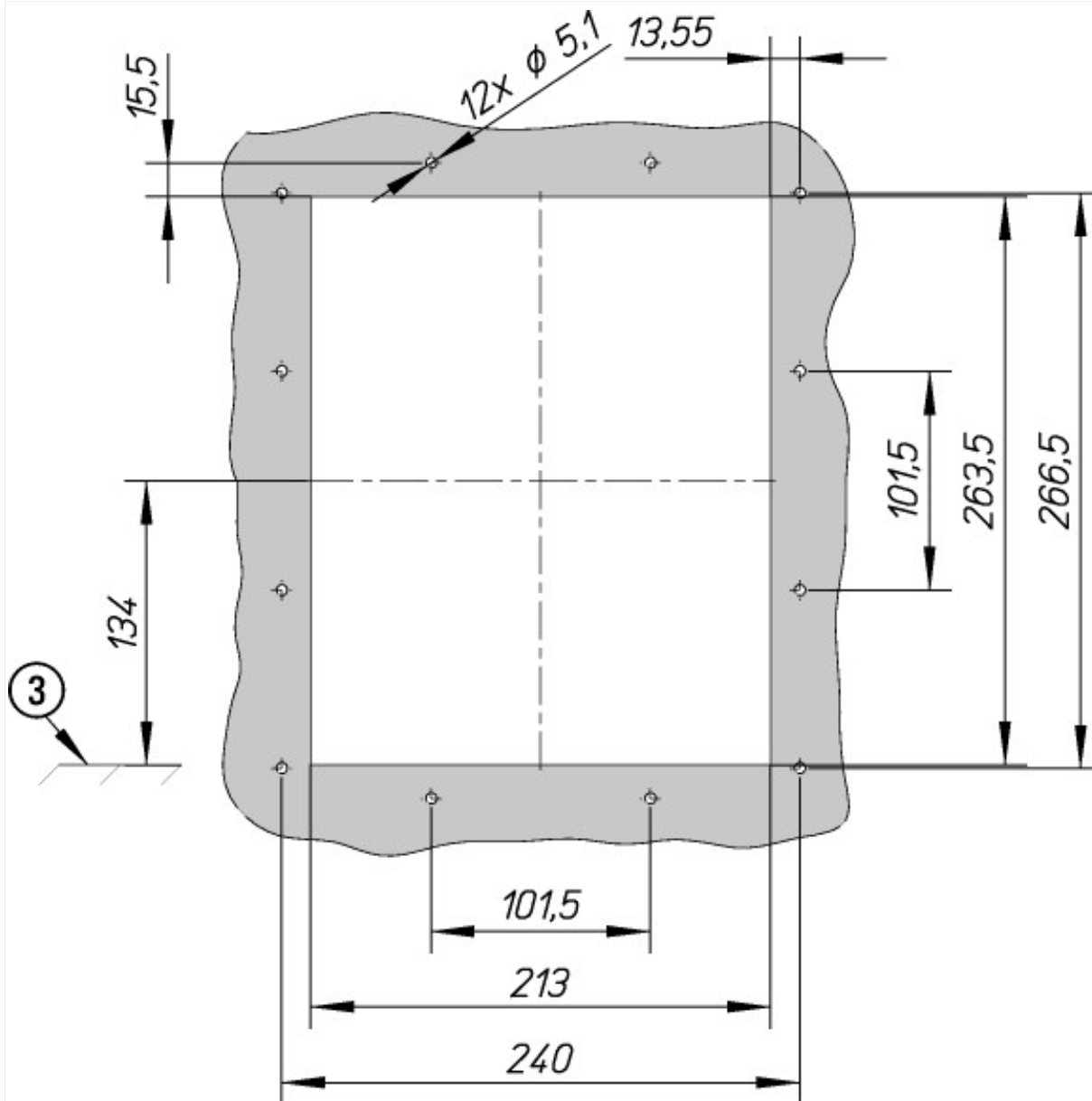
Product range		Accessories
Accessories		Degree of protection IP31
Accessories		Spare door seal
		Replacement door escutcheon with gasket IP31
For use with		IZMX16...F INX16...F
Instructions		Spare part; supplied as standard with every breaker.

Design verification as per IEC/EN 61439

Technical data for design verification		
Operating ambient temperature min.	°C	-25
Operating ambient temperature max.	°C	70

Technical data ETIM 7.0

Low-voltage industrial components (EG000017) / Accessories for low-voltage switch technology (EC002498)		
Electric engineering, automation, process control engineering / Low-voltage switch technology / Component for low-voltage switching technology / Component for low-voltage switch technology (accessories) (ecl@ss10.0.1-27-37-13-92 [AKN570013])		
Type of accessory		Other



③ Top edge mounting floor of the Circuit Breaker