

HARVIA HAFBM

HAFB600400M

The always-ready Finnish Harvia Forte heater provides you with a perfect moment of relaxation in no time at all to punctuate your hectic schedule. The Forte is Harvia's innovative version of the heat-storing electric heater, combining top-of-the-range heater technology with a sleek design. Just grab a towel, lift the Forte's cover and climb onto the bench to enjoy humid and gentle steam. Welcome to a stress-free zone 24/7. The Forte is equipped with a separate splash-proof control panel. Thanks to the separate control panel, the Forte is extremely well-suited for being embedded into a bench. The Forte's new properties provide family saunas with a sense of safety. The heater will turn off automatically if you forget to close the cover, and the control panel has a keypad lock. The new ECO mode saves electricity, as it allows you to adjust the heater's temperature to a very low setting without turning off the heater.



Features

Main material : Steel

H x W x D : 839.0 x 500.0 x 535.0 mm

Net weight (kg) : 33.0

Installation type : Floor

ID	GTIN	Output (kW)	Sauna room size min - max m3
HAFB600400M	6410082645466	6 kW	7.0-12.0

Related products



HAF1



HAF1



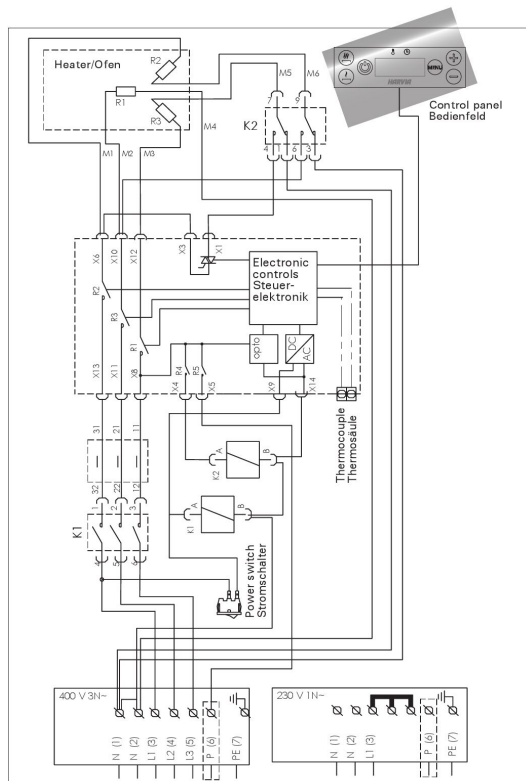
Spare parts

Product	ID	Pcs
Heating element 2000W/230V, Forte	ZSF-30	1
Handle for Forte	ZSF-210	1
Gasket for Forte lid	ZSF-230	1

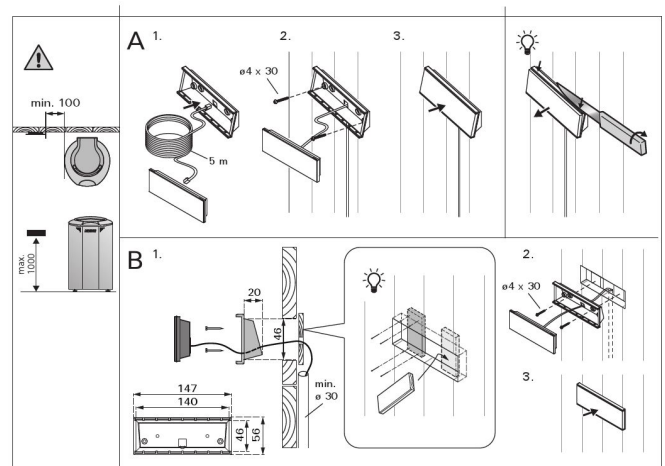
Technical details

Technical data	Type / attribute	HAFB600400M
Technical data	Color	Black
	Power output	6 kW
	Stone sizes	5-10 cm
	Stone amount (kg)	100
Dimensions	Product width (mm)	500
	Product height (mm)	839
	Product depth (mm)	535
	Net weight (kg)	33
	Gross weight	35
	Package width	520
	Package height	880
	Package depth	550
Safety and installation dimensions	Safety distance front (non-combustible materials)	20
	Safety distance front (combustible materials)	20
	Safety distance side (non-combustible materials)	20
	Safety distance side (combustible materials)	20
	Safety distance behind (non-combustible materials)	30
	Safety distance (Ceiling) (depends on connections and therefore from output, star/delta)	1000
	Room min. height(depends on connections and therefore from output, star/delta)	1900
	Installation opening height	1900
	Installation opening width	90
	Installation opening depth	585

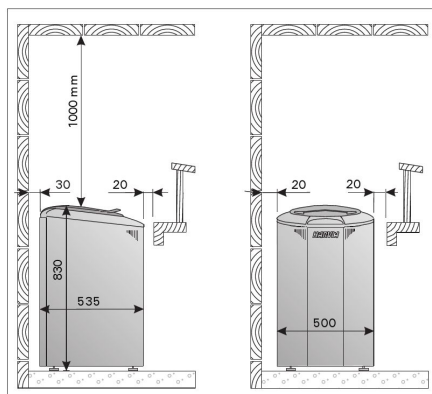
Technical images



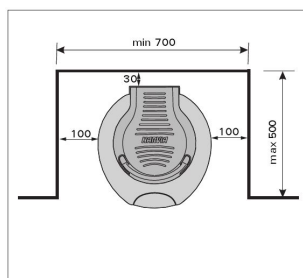
Electrical connections of heater



Installing the control panel (all dimensions in millimeters)



Minimum safety distances from the heater (mm)



Installation of the heater in a recess

