



Residual-current transformer for residual current monitoring Bushing
opening 35 mm Residual current 30 mA...40 A

General technical data		
product designation	Residual current transformer for fault current monitoring	
product feature touch protection	Yes	
type of electrical connection at output	screw-type terminals	
operating voltage rated value maximum	690 V	
continuous current per phase maximum	85 A	
fault current at input rated value	40 A	
surge voltage resistance rated value	6 kV	
reference code according to IEC 81346-2	B	
reference code according to DIN 40719 extended according to IEC 204-2 according to IEC 750	T	
reference code according to EN 61346-2	B	
Connections/ Terminals		
type of connectable conductor cross-sections <ul style="list-style-type: none">• solid• finely stranded<ul style="list-style-type: none">— with core end processing• at AWG cables<ul style="list-style-type: none">— solid	1x (0.5 ... 2.5 mm²) 1x (0.5 ... 1.5 mm²) 1x (20 ... 13)	
Ambient conditions		
ambient temperature <ul style="list-style-type: none">• during transport• during operation• during storage	-25 ... +60 °C -25 ... +60 °C -40 ... +85 °C	
relative humidity during operation	95 %	
installation altitude at height above sea level	2 000 m	
Installation/ mounting/ dimensions		
diameter of inlet opening	35 mm	
width	70 mm	
height	64 mm	
depth	75.5 mm	
mounting position	standing, on horizontal mounting surface	
fastening method	Screw and rail mounting	
tightening torque with screw-type terminals	0.5 ... 0.6 N·m	
tightening torque [lbf·in] with screw-type terminals	4.4 ... 5.3 lbf·in	
Certificates/ approvals		
General Product Approval	Declaration of Conformity	Test Certificates



[Confirmation](#)



[Type Test Certificates/Test Report](#)

other

[Confirmation](#)

Further information

Information- and Downloadcenter (Catalogs, Brochures,...)

<https://www.siemens.com/ic10>

Industry Mall (Online ordering system)

<https://mall.industry.siemens.com/mall/en/en/Catalog/product?mlfb=3UL2302-1A>

Cax online generator

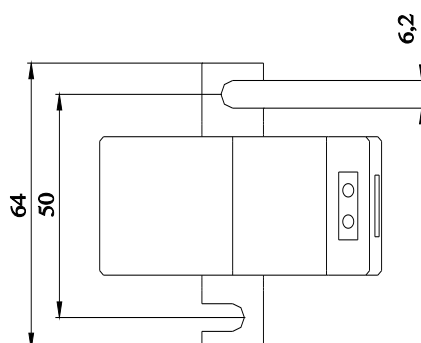
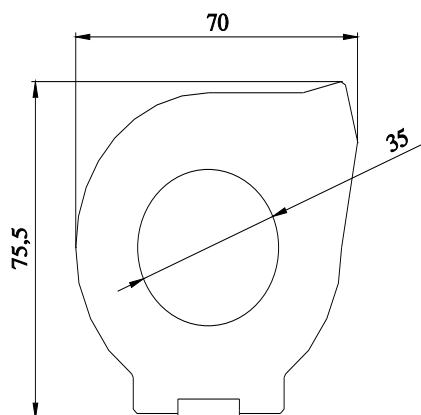
<http://support.automation.siemens.com/WW/CAXorder/default.aspx?lang=en&mlfb=3UL2302-1A>

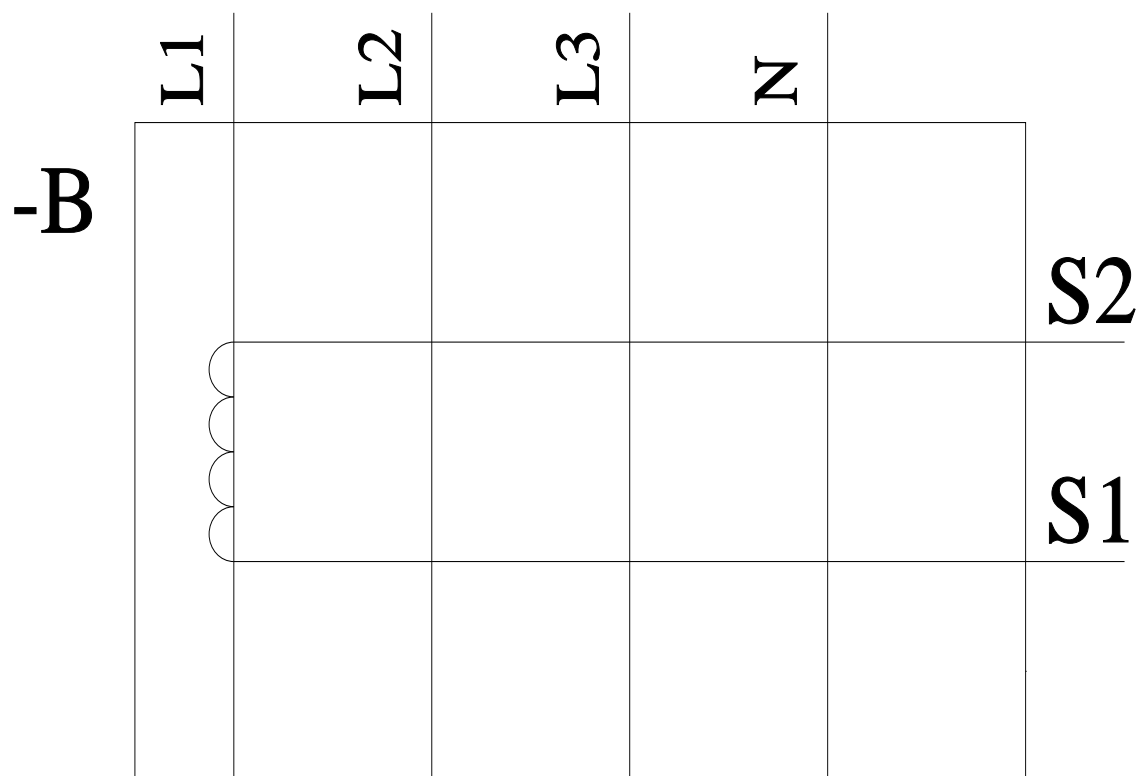
Service&Support (Manuals, Certificates, Characteristics, FAQs,...)

<https://support.industry.siemens.com/cs/ww/en/ps/3UL2302-1A>

Image database (product images, 2D dimension drawings, 3D models, device circuit diagrams, EPLAN macros, ...)

http://www.automation.siemens.com/bilddb/cax_de.aspx?mlfb=3UL2302-1A&lang=en





last modified:

12/23/2020 [🔗](#)