

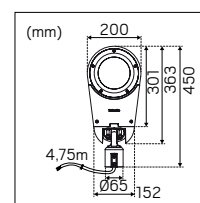
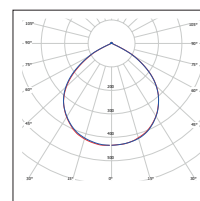
SHARP POST

Sharp Post is a perfect post luminaire in a sharp design for installation on posts and complies with requirements for glare, evenness and colour rendering for car parks. Perfect for smaller cycle parking areas to large shopping centres and open areas, posts between 4–6m. Adjustable lumen output and selectable colour temperature via DIP-switch. Impact resistant (IK10) with durable powder coating to withstand our Nordic climate. Light can be directed thanks to the adjustable luminaire head. Easily installed with flexible post bracket for posts of 48mm or 60mm diameter. Comes with 5m of pre-mounted rubber cable for easy connection in the post.



**WITH A SHARP
DESIGN FOR LIGHT
AROUND LARGE
PROPERTIES**

- Complies with requirements for glare, evenness and colour rendering for car parks
- Adjustable lumen output and selectable colour temperature via DIP-switch
- IK10 – impact resistant with durable powder coating to withstand our Nordic climate
- Suitable for posts of 48mm or 60mm diameter
- Supplied complete with 5m cable



GTIN	Color	Colour Temperature	Luminaire Lumen	Power Luminaire
7392971145242	Grey (RAL7042)	3000K/4000K	1100lm-2950lm	10,5W-31W
7392971145259	Anthracite (RAL7016)	3000K/4000K	1100lm-2950lm	10,5W-31W

