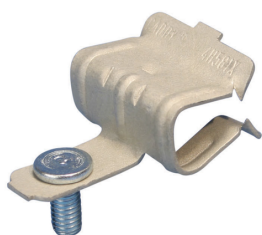




## HAMMER-ON FLANGE CLIP, VERTICAL MOUNT WITH STUD, 0.31"–0.55" FLANGE

### CATALOG NUMBER

**4H58IM11**



### FEATURES

Can be used to support boxes, fixtures or other applications from beam flanges

Captive threaded stud minimizes the need for additional hardware

Fits most beams

Requires only a hammer to install

### PRODUCT ATTRIBUTES

Article Number: 170160

Material: Spring Steel;Steel

Finish: nVent CADDY Armour;Electrogalvanized

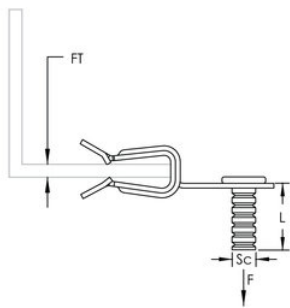
Flange Thickness: 8 – 14 mm

Screw Diameter: M6

Screw Length: 11 mm

Static Load: 150 N

### DIAGRAMS



## WARNING

nVent products shall be installed and used only as indicated in nVent's product instruction sheets and training materials. Instruction sheets are available at [www.nvent.com](http://www.nvent.com) and from your nVent customer service representative. Improper installation, misuse, misapplication or other failure to completely follow nVent's instructions and warnings may cause product malfunction, property damage, serious bodily injury and death and/or void your warranty.

### Nord-Amerika

+1.800.753.9221

Option 1 – Customer Care

Option 2 – Technical Support

### Europa

Netherlands:

+31 800-0200135

France:

+33 800 901 793

### Europa

Germany:

800 1890272

Other Countries:

+31 13 5835404

### APAC

Shanghai:

+ 86 21 2412 1618/19

Sydney:

+61 2 9751 8500



Our powerful portfolio of brands:  
[nVent.com](http://nVent.com) **CADDY ERICO HOFFMAN RAYCHEM SCHROFF TRACER**

© 2022 nVent. All nVent marks and logos are owned or licensed by nVent Services GmbH or its affiliates. All other trademarks are the property of their respective owners.

nVent reserves the right to change specifications without notice.