



CABLE TIE WITH FLANGE CLIP, S301, 0.55"–0.79" FLANGE, S302 TIE

CATALOG NUMBER

4H912CTBRS1



FEATURES

Used to support cables from beam flanges

Requires only a hammer to install

Comes complete with zip-tie

PRODUCT ATTRIBUTES

Article Number: 170310

Material: Stainless Steel 301 (EN 1.4310)

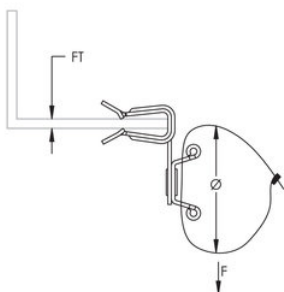
Flange Thickness: 14 – 20 mm

Cable Tie: Stainless Steel 302 (EN 1.4324)

Diameter: 25 – 51 mm

Static Load: 300 N

DIAGRAMS



WARNING

nVent products shall be installed and used only as indicated in nVent's product instruction sheets and training materials. Instruction sheets are available at www.nvent.com and from your nVent customer service representative. Improper installation, misuse, misapplication or other failure to completely follow nVent's instructions and warnings may cause product malfunction, property damage, serious bodily injury and death and/or void your warranty.

Nord-Amerika

+1.800.753.9221

Option 1 – Customer Care

Option 2 – Technical Support

Europa

Netherlands:

+31 800-0200135

France:

+33 800 901 793

Europa

Germany:

800 1890272

Other Countries:

+31 13 5835404

APAC

Shanghai:

+ 86 21 2412 1618/19

Sydney:

+61 2 9751 8500



Our powerful portfolio of brands:
nVent.com **CADDY ERICO HOFFMAN RAYCHEM SCHROFF TRACER**

© 2022 nVent. All nVent marks and logos are owned or licensed by nVent Services GmbH or its affiliates. All other trademarks are the property of their respective owners.

nVent reserves the right to change specifications without notice.