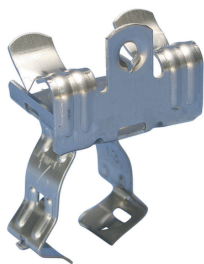




EM-M CONDUIT/PIPE TO FLANGE CLIP, S301, 1/8"–1/4" FLANGE

CATALOG NUMBER

8EM24S1



FEATURES

Supports conduit/pipe or cable from beam flanges

Snap close clip pivots a full 360°

Requires only a hammer to install

PRODUCT ATTRIBUTES

Article Number: 179780

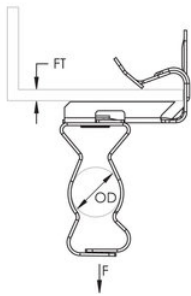
Material: Stainless Steel 301 (EN 1.4310)

Outer Diameter: 18 – 22 mm

Flange Thickness: 3 – 8 mm

Static Load: 200 N

DIAGRAMS



WARNING

nVent products shall be installed and used only as indicated in nVent's product instruction sheets and training materials. Instruction sheets are available at www.nvent.com and from your nVent customer service representative. Improper installation, misuse, misapplication or other failure to completely follow nVent's instructions and warnings may cause product malfunction, property damage, serious bodily injury and death and/or void your warranty.

Nord-Amerika

+1.800.753.9221
Option 1 – Customer Care
Option 2 – Technical Support

Europa

Netherlands:
+31 800-0200135
France:
+33 800 901 793

Europa

Germany:
800 1890272
Other Countries:
+31 13 5835404

APAC

Shanghai:
+ 86 21 2412 1618/19
Sydney:
+61 2 9751 8500



Our powerful portfolio of brands:
nVent.com CADDY ERICO HOFFMAN RAYCHEM SCHROFF TRACER

© 2022 nVent. All nVent marks and logos are owned or licensed by nVent Services GmbH or its affiliates. All other trademarks are the property of their respective owners.
nVent reserves the right to change specifications without notice.