

## C-CHANNEL BEAM CLAMP WITH U-BOLT, E0L, E0, E1, E2L, E2, E3 CHANNEL

### CATALOG NUMBER

**BCE03**



### FEATURES

Beam clamp for C-Profiles

Complete with plate, U-bolt and fixings

### PRODUCT ATTRIBUTES

Article Number: 585120

Material: Steel

Finish: Electrogalvanized

Channel Type: E0L;E0;E1;E2L;E2;E3

Rod Size: M6

Flange Thickness: 16 mm Max

Width: 60 mm

Thickness: 4 mm

A: 20 mm

B: 36 mm

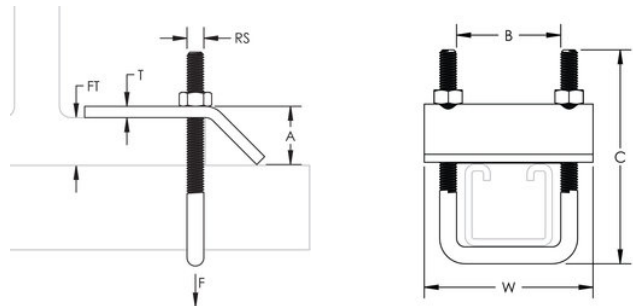
C: 70 mm

Static Load: 1,250 N

ADDITIONAL PRODUCT DETAILS

Static Load is dependent on channel type and length.

DIAGRAMS



WARNING

nVent products shall be installed and used only as indicated in nVent's product instruction sheets and training materials. Instruction sheets are available at [www.nvent.com](http://www.nvent.com) and from your nVent customer service representative. Improper installation, misuse, misapplication or other failure to completely follow nVent's instructions and warnings may cause product malfunction, property damage, serious bodily injury and death and/or void your warranty.

Nord-Amerika

+1.800.753.9221  
Option 1 – Customer Care  
Option 2 – Technical Support

Europa

Netherlands:  
+31 800-0200135  
France:  
+33 800 901 793

Europa

Germany:  
800 1890272  
Other Countries:  
+31 13 5835404

APAC

Shanghai:  
+ 86 21 2412 1618/19  
Sydney:  
+61 2 9751 8500



Our powerful portfolio of brands:  
[nVent.com](http://nVent.com) CADDY ERICO HOFFMAN RAYCHEM SCHROFF TRACER