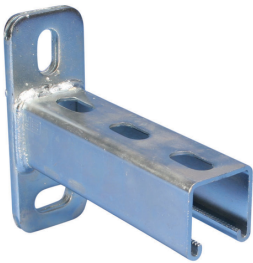




STRUT CANTILEVER ARM TYPE A, SLOTTED, STEEL, EG, 0.098"X17.75"X1.625"X1.625"

CATALOG NUMBER

KA25H0450EG



CERTIFICATIONS



FEATURES

Slotted channel

Welded on flat mounting plate

PRODUCT ATTRIBUTES

Article Number: 311728

Strut Type: A (41 x 41 mm)

Material: Steel

Finish: Electrogalvanized

Thickness: 2.50 mm

Length: 450 mm

Width: 50 mm

Height: 133 mm

E: 8 mm

D: 50 mm

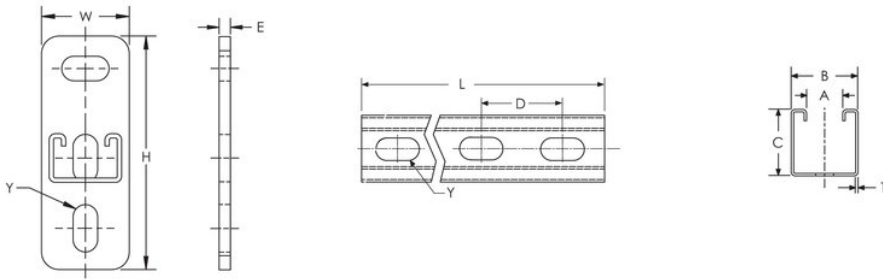
C: 41 mm

B: 41 mm

A: 22 mm

Y: 14 x 27 mm

DIAGRAMS



WARNING

nVent products shall be installed and used only as indicated in nVent's product instruction sheets and training materials. Instruction sheets are available at www.nvent.com and from your nVent customer service representative. Improper installation, misuse, misapplication or other failure to completely follow nVent's instructions and warnings may cause product malfunction, property damage, serious bodily injury and death and/or void your warranty.

Nord-Amerika

+1.800.753.9221

Option 1 – Customer Care

Option 2 – Technical Support

Europa

Netherlands:

+31 800-0200135

France:

+33 800 901 793

Europa

Germany:

800 1890272

Other Countries:

+31 13 5835404

APAC

Shanghai:

+ 86 21 2412 1618/19

Sydney:

+61 2 9751 8500



Our powerful portfolio of brands:

nVent.com CADDY ERICO HOFFMAN RAYCHEM SCHROFF TRACER

© 2022 nVent. All nVent marks and logos are owned or licensed by nVent Services GmbH or its affiliates. All other trademarks are the property of their respective owners.

nVent reserves the right to change specifications without notice.