



Art. PH411

Replacement Phone

This phone is designed to replace all models in the existing 4+1 and 1+1 systems. It also features the most common extra functions.

Features:

- Polarity independent in 4+1 mode.
To be installed in systems with common + or 0.
- Adjustable microphone amplifier.
Can replace carbon or condenser microphone
- Onboard tone generator. For DC call signal or local bell.
- Onboard dry contact relay activated by the call signal.
For external sound or light.
- Privacy ON/OFF switch. Prevents undesirable calls.
- Dry contact service button. For light, lift, etc.
- Operates in 6 to 12 V ac/dc systems.

Connecting terminals:

- 1: microphone
- 2: speaker
- 3: ground
- 4: tone call
- 5: door opener
- 6: buzzer
- 7: local bell
- 8: service button 1
- 9: service button 2 — dry contact
- 10: call relay term. 1
- 11: call relay term. 2 — normally open dry contact

Jumpers:

JMP 1 - JMP 5: left position for 4 +1 systems
right position for the 1+1 systems

JMP 6: low position for the activation of call relay.

JMP 7: top position for 12 V ac call voltage (buzzer)
lower position for 6 - 12 V ac/dc call voltage, for tone operation.

JMP 8: left position for 6 – 8 V dc operation of tone generator
right position for 8 - 12 V ac/dc operation of tone generator

JMP 9: (1+1 systems only)
right position for Videx and similar models
left position for Acet models

TONE CALL
3 LEVEL VOLUME

POLARITY-INDEPENDENT
ADJUSTABLE MIC. AMPLIFIER

SPEAKER
VOLUME

SERVICE BUTTON

TONE GENERATOR

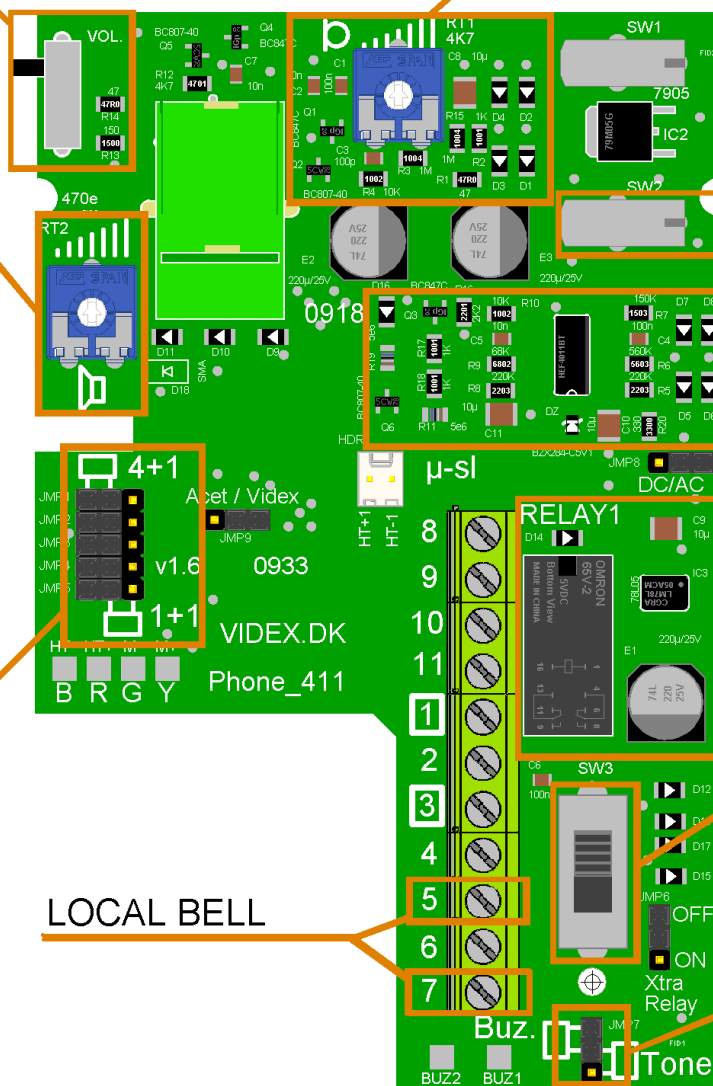
4+1 / 1+1
SELECTION
SWITCH

CALL ACTIVATED
RELAY

PRIVACY SWITCH

LOCAL BELL

BUZZER - TONE
SELECTION SWITCH



REPLACES HANDSET IN ALL
4+1 AND 1+1 SYSTEMS

ONE FOR ALL
ALL IN ONE