

#### INTRODUCTION

The Art.481 is a USB to RS485/RS232 converter. This application will advise you how to install the Art.481 USB driver on Windows 7 OS system.

#### HARDWARE REQUIREMENTS

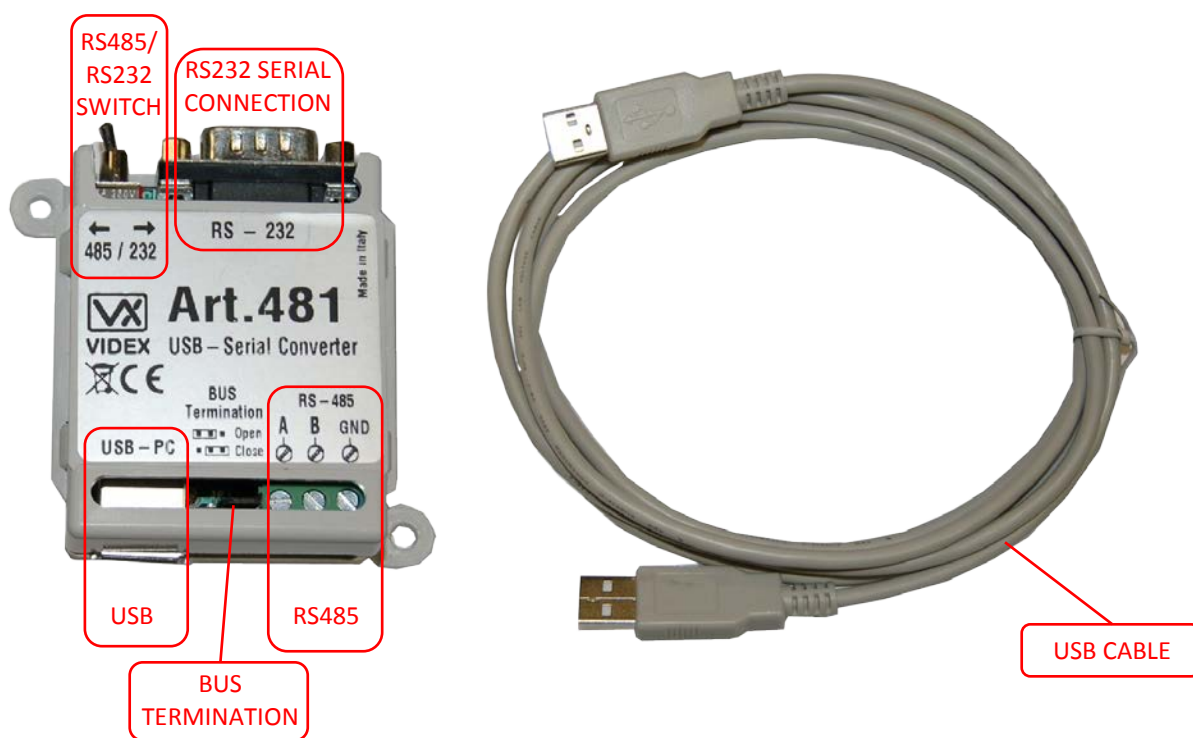
Art.481 – USB to RS485/RS232 converter with USB cable.

#### SOFTWARE REQUIREMENTS

Art.481 USB Driver (CDM20814\_Setup.exe or later).

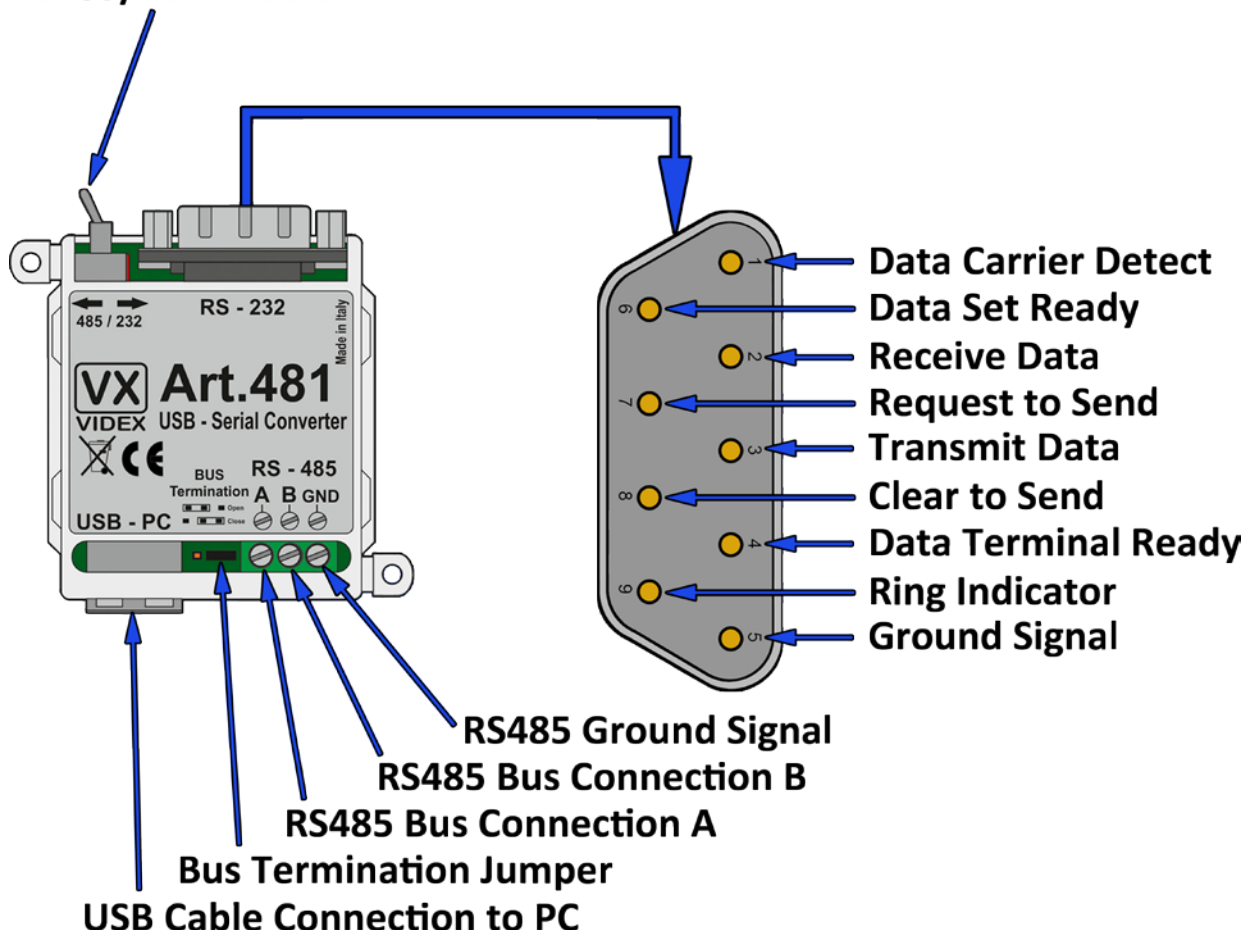
#### HARDWARE

Below is the Art.481 USB-Serial converter module and USB cable.



#### ART.481 SWITCH, LEAD, JUMPER TERMINAL AND PIN OUT CONNECTIONS

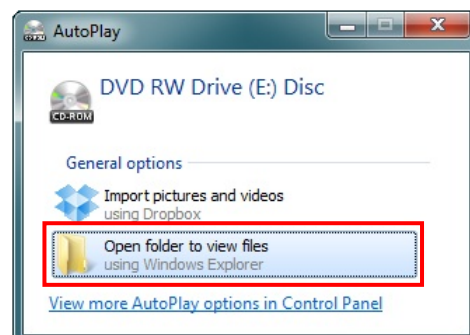
##### RS485/RS232 Selection Switch



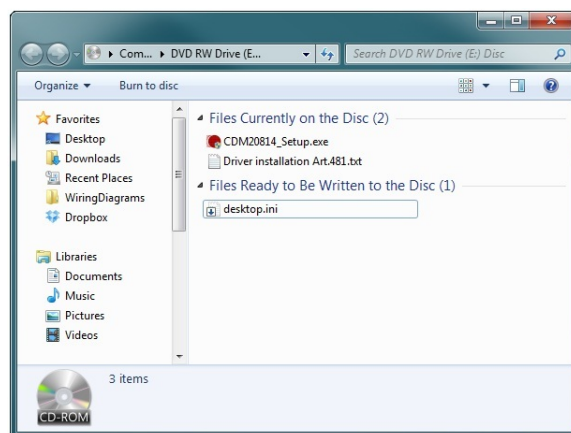
#### ART.481 SET UP

The Art.481 installation disc contains the 'USB driver CDM20814\_Setup.exe' file (or later) and 'Driver installation Art.481.txt' document. Before plugging in the USB cable to the USB port on the PC/laptop please install the Art.481 USB driver first. The following screen dumps and notes will take you through each step on how to set up the Art.481 USB driver. All settings can be seen and the settings which require changes are highlighted.

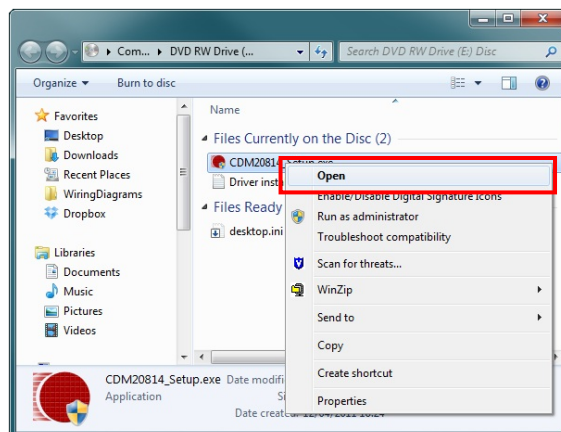
Load up installation disc. The following AutoPlay window will appear. Click on 'Open folder to view files' option.



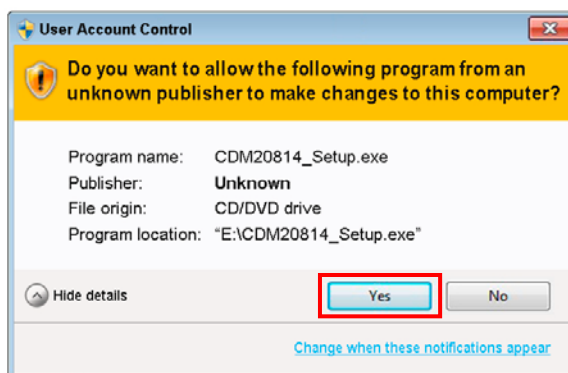
The following window will appear.



Highlight the 'CDM20814\_Setup.exe' file and right click and select open from the drop down list.

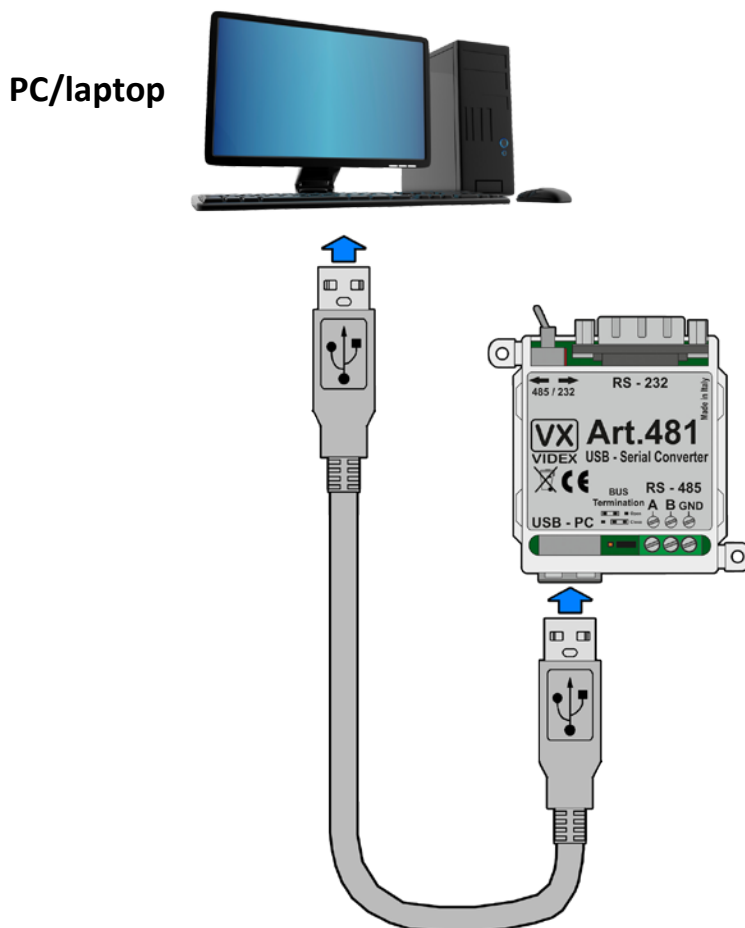


The following window will appear. Select 'yes' to install Art.481 driver.

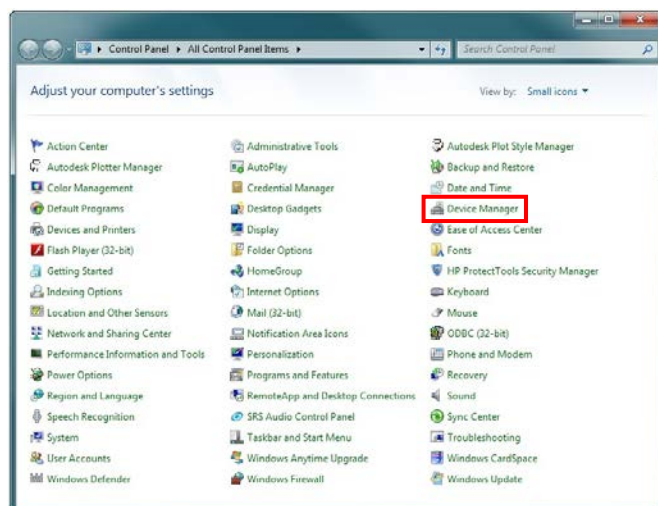


#### CHECKING DRIVER HAS INSTALLED PROPERLY

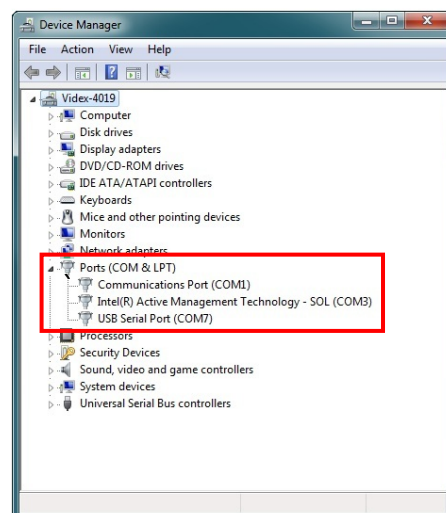
Plug the USB cable into the Art.481 then plug the other end into the PC/laptop as shown below.



Click on the windows 'start' icon on the bottom left of the taskbar and select 'control panel' from the list on the right hand-side. The following window will appear. Select 'Device Manager' from the list.



The 'Device Manager' window will appear. From the list select the 'Ports (COM & LPT)' and expand the list. The USB connection will be included on the list and shown as 'USB Serial Port' and in brackets ( ) the com port number, in this example it is shown as 'USB Serial Port (COM7)'.



Select 'USB Serial Port (COM7)' from the expanded list and 'double click'. The 'USB Serial Port (COM7) Properties' window will appear. The 'General' Tab will already be selected and display the following information. Ensure that the information displayed is the same as the information highlighted.

USB Serial Port (COM7)  
Device Type: Ports (COM & LPT)  
Manufacturer: FTDI  
Location: on USB Serial Converter

