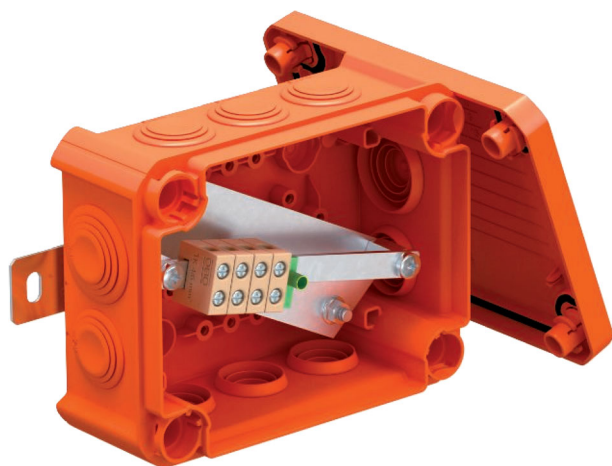


Technical data sheet

FireBox, with plug-in seals, for data technology

Item no. 7205764



Connection box for data technology with soft plug-in seals. Pairs of high temperature-resistant ceramic terminals, suitable for data cables. Green and yellow labelled protective conductor/shield terminal. Fastening on easily accessible external flaps. Approved for cable systems with electrical function maintenance according to DIN 4102 Part 12 with the classes E30, E60 and E90.

Including 2 x MMSplus P 6x35 screw ties.

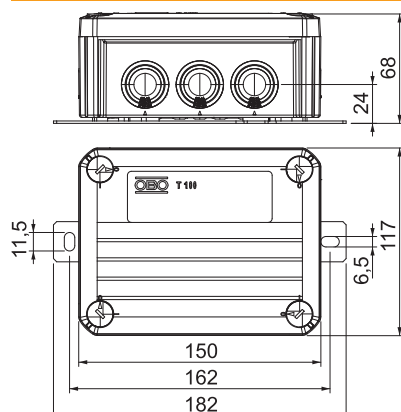


PP Polypropylene

Master data

Item no.	7205764
Type	T100ED 4x4AD
Description 1	Junction box
Description 2	for function maintenance
Dimension	150x116x67
Colour	Pastel orange
RAL number	2003
Material	Polypropylene
Material symbol	PP
Smallest sales unit (VG)	1,00 Piece
Weight	41,69 kg/100 pc.

Technical data



Length	150,00 mm
Width	116,00 mm
Height	68,00 mm
Clear internal dimensions	136x102x57 mm
Dimension L	150,00 mm
Dimension B	116,00 mm
Dimension H	68,00 mm
Dimension L1	162,00 mm
Dimension L2	182,00 mm
Dimension LxWxH	150x116x68 mm
Expandable	□
No. of entries	10,00
Number of terminals	5,00
Type of housing penetration	Cuttable stepped membrane
Equipment	Terminal
Cover	Not transparent

Technical data sheet

FireBox, with plug-in seals, for data technology

Item no. 7205764



Technical data

Cover fastening	Screwed
Entries	8 x M25 2 x M32
Entry from rear	<input type="checkbox"/>
Explosion-tested version	<input type="checkbox"/>
Shape	Rectangular
Function maintenance (ETIM)	E 90
For Ex zone	Without
For Ex zone gas	Without
For Ex zone dust	Without
Halogen-free	<input checked="" type="checkbox"/>
With screening	<input type="checkbox"/>
with lid	Yes
With cover	<input checked="" type="checkbox"/>
Installation type	Surface-mounted
Nominal cross section	0,50 - 4,00 mm ²
Nominal voltage	660,00 V
Protection rating	IP66
Sealable	<input type="checkbox"/>
Impact-resistant	<input type="checkbox"/>
Transparent lid	<input type="checkbox"/>
Weatherproof	<input type="checkbox"/>