



MASTER LEDtube InstantFit HF T5

MAS LEDtube HF 900mm HE 11.5W 830 T5

The Philips MASTER LEDtube integrates a LED light source into a traditional fluorescent form factor. Its unique design creates a perfectly uniform visual appearance, which cannot be distinguished from traditional fluorescent. These T5 lighting tubes are the right choice for absolute performance and are designed to stand up to everyday conditions. Unparalleled savings thanks to low energy consumption and an exceptionally long lifetime make these T5 LED tubes the choice for every demanding application.

Product data

| Operating and Electrical | |
|----------------------------|----------------|
| Line Frequency | 30K to 100K Hz |
| Input Frequency | 30K to 100K Hz |
| Power Consumption | 11.5 W |
| Starting Time (Nom) | 0.5 s |
| Warm-up time to 60% light | 0.5 s |
| Power Factor (Fraction) | 0.9 |
| Voltage (Nom) | 60-100 V |
| General Information | |
| Cap-Base | G5 [G5] |
| CE mark | Yes |
| EU RoHS compliant | Yes |
| Nominal lifetime | 60,000 hour(s) |
| Switching Cycle | 50,000 |
| Lighting Technology | LED |
| Flux measurement reference | Sphere |

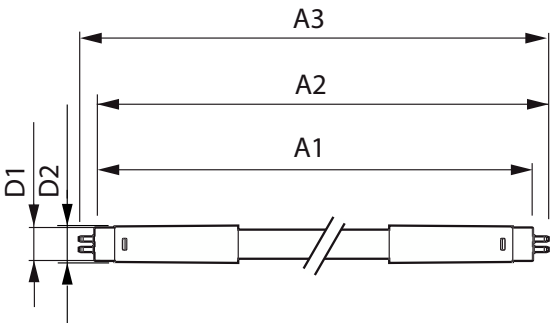
| Brand | Philips |
|---------------------------------------|--------------------|
| Light Technical | |
| Color Code | 830 [CCT of 3000K] |
| Beam Angle (Nom) | 200 degree(s) |
| Luminous Flux | 1,600 lumen |
| Color Designation | White (WH) |
| Correlated Color Temperature (Nom) | 3000 K |
| Luminous Efficacy (rated) (Nom) | 139 lm/W |
| Color Consistency | <6 |
| Color rendering index (CRI) | 80 |
| LLMF At End Of Nominal Lifetime (Nom) | 70 % |
| Temperature | |
| Ambient temperature range | -20 °C to 45 °C |
| T-Case Maximum (Nom) | 55 °C |

MASTER LEDtube InstantFit HF T5

| | |
|-------------------------------|--|
| Controls and Dimming | |
| Dimmable | Yes - Check ballast compatibility |
| Mechanical and Housing | |
| Bulb Finish | Frosted |
| Bulb Material | Glass |
| Product Length | 900 mm |
| Bulb Shape | Tube, double-ended |
| Approval and Application | |
| Energy Saving Product | Yes |
| Approval Marks | RoHS compliance TUV CE marking KEMA Keur certificate |
| Energy Consumption kWh/1000 h | 12 kWh |

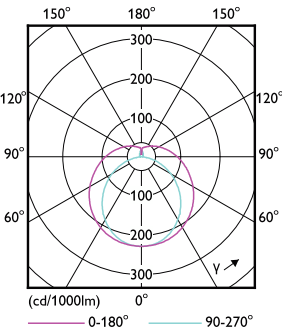
| | |
|---------------------------------|--------------------------------------|
| Product Data | |
| Full product code | 872016916319500 |
| Order product name | MAS LEDtube HF 900mm HE 11.5W 830 T5 |
| Order code | 929003596802 |
| Local order code | MTHFT51190HE830 |
| Numerator - Quantity Per Pack | 1 |
| Numerator - Packs per outer box | 10 |
| Material number (12NC) | 929003596802 |
| Net weight | 0.115 kg |
| Full product name | MAS LEDtube HF 900mm HE 11.5W 830 T5 |
| EAN/UPC - Case | 8720169163201 |

Dimensional drawing

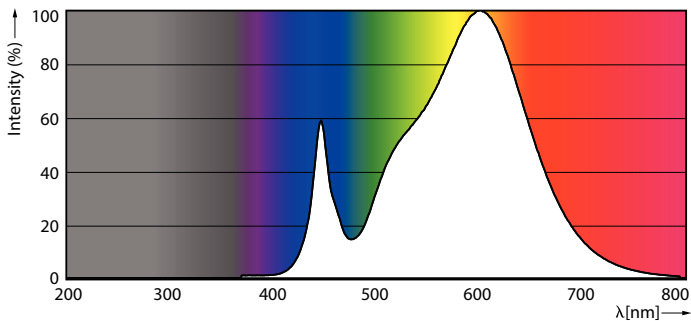


| Product | D1 | D2 | A1 | A2 | A3 |
|--------------------------------------|---------|----------|--------|--------|--------|
| MAS LEDtube HF 900mm HE 11.5W 830 T5 | 15.5 mm | 16/19 mm | 849 mm | 856 mm | 863 mm |

Photometric data



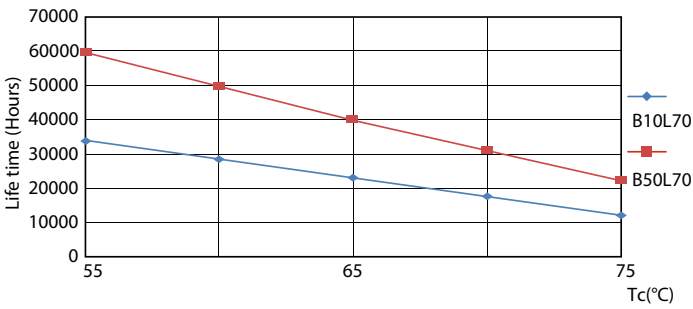
Light Distribution Diagram



Spectral Power Distribution Colour

MASTER LEDtube InstantFit HF T5

Lifetime



Life Expectancy Diagram

