

# LITELINE IP65 BLUETOOTH



D-MARKED  
FLUORESCENT TUBE  
REPLACEMENTS – NOW  
WITH BLUETOOTH

Highly efficient fluorescent tube replacement with various control options. Sliding multi-fasteners and separate connection spaces in the end caps. 5x2.5mm<sup>2</sup> push-in terminals for through wiring as standard, M20 fitting and knockouts in each end cap. Adapted for installation on luminaire rail, keyhole for installation in ceiling and integrated wire suspension with hook and hook lock. D-marked, IP65 and IK09-classed for installation in rougher environments and areas with increased fire risk. Liteline IP65 is perfect for car parks, carpentry shops and dusty and dirty industries.

- Bluetooth with smart app control: stairwell, corridor, astro function and daylight compensation
- Fluorescent tube replacement with high lumen output — efficient up to 138lm/W
- Easy to install - Sliding multi-fasteners and separate connection space in end caps
- Well thought-out construction - connection and access to driver and sensor without opening the diffuser
- Through wiring 5x2.5mm<sup>2</sup> as standard
- IP65 & IK09 – for demanding environments
- D-marked according to SS-EN 60598-2-24 - for spaces with a high fire risk
- Luminaire life time L80 100,000h Ta 25°C / driver 50,000h/10%



Easy access to sensor and driver.

With a few simple steps via an app, you can easily reduce your programming time. Liteline IP65 with Bluetooth has many functions such as grouping, configuration for stairwell function and corridor, as well as daylight compensation and astro function.

Keep in mind that each lighting solution is unique and that it is therefore important that you read our product manuals for complete specification of the lighting control.

Feel free to contact us if you have questions about our products and lighting control or just want guidance and tips.

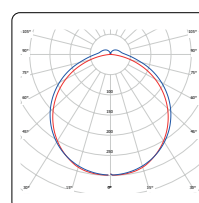
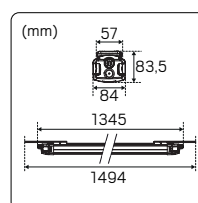


**hidealite**  
www.hidealite.se

## LITELINE IP65 1200



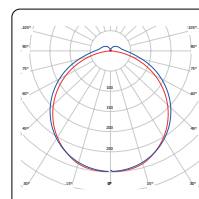
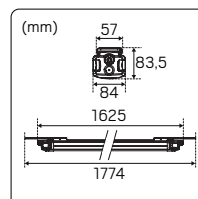
GTIN	Type	Colour	Colour temperature	Luminaire lumen	Luminaire efficiency	Effect luminaire
7392971138930 <sup>1)</sup>	On/Off	Aluminium/Light Grey (RAL7035)	4000K	5150lm	136lm/W	38W
7392971138947 <sup>2)</sup>	Microwave sensor	Aluminium/Light Grey (RAL7035)	4000K	5150lm	134lm/W	38,5W
7392971140377 <sup>3)</sup>	DALI	Aluminium/Light Grey (RAL7035)	4000K	5150lm	132lm/W	39W
7392971146881 <sup>4)</sup>	Bluetooth	Aluminium/Light Grey (RAL7035)	4000K	5150lm	129lm/W	40W



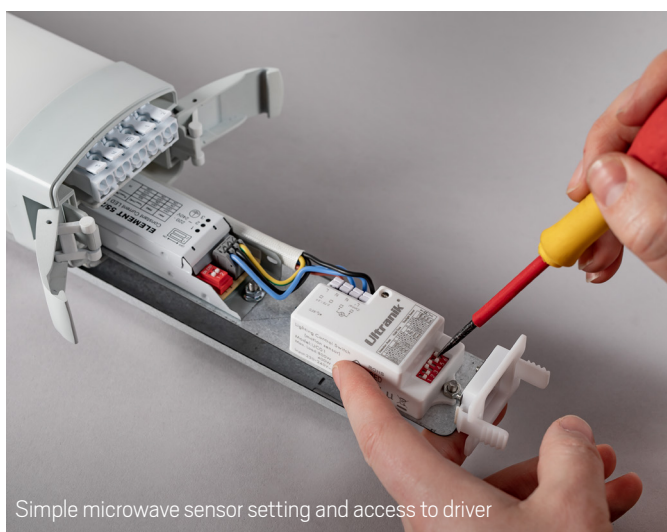
## LITELINE IP65 1500



GTIN	Type	Colour	Colour temperature	Luminaire lumen	Luminaire efficiency	Effect luminaire
7392971138954 <sup>1)</sup>	On/Off	Aluminium/Light Grey (RAL7035)	4000K	6850lm	138lm/W	49,5W
7392971138961 <sup>2)</sup>	Microwave sensor	Aluminium/Light Grey (RAL7035)	4000K	6850lm	136lm/W	50W
7392971140384 <sup>3)</sup>	DALI	Aluminium/Light Grey (RAL7035)	4000K	6850lm	132lm/W	52W
7392971146898 <sup>4)</sup>	Bluetooth	Aluminium/Light Grey (RAL7035)	4000K	6850lm	137lm/W	50W



Sliding multi-fastener outside the luminaire for simple installation



Simple microwave sensor setting and access to driver