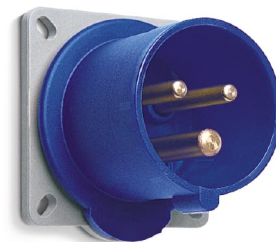


# FDV - IPS E&S AIE 232BU6 PA.INN IP44

IPS E&S AIE 232BU6 PA.INN IP44

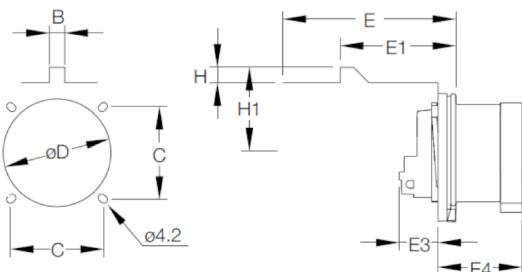


## Produktinformasjon

Elnr:	1544032
ABB identnr:	2CMA193434R1000
Varenavn:	IPS E&S AIE 232BU6 PA.INN IP44
Varebetegnelse:	232BU6
EAN:	7392696934343
Forpakning:	10
Enhet:	BOKS
Teknisk beskrivelse:	Industri innfelt apparatinntak 32A, 2P+J, 6h, 200-250V 50-60Hz Normer: EN 60309-1 og EN 60309-2. Kapslingsmateriale: Polyamid Innsatsmateriale: Polyamid. Beskyttelseslokk, se GP 232/332.

## Teknisk info

Standard:	IEC 60309-1, IEC 60309-2
ETIM:	EC001319 - CEE-apparatinntak
Vedlikehold:	



Dimensions (mm)

Type	B	C	D	E	E1	E3	E4	H	H1
316BU...	9	60-61	59	90	52.5	21.0	46.5	7	38.0
416BU...	9	60-61	59	90	52.5	21.0	46.5	7	38.0
232BU...	9	60-61	66	90	53.5	24.5	55.5	7	40.0
332BU...	9	60-61	66	90	53.5	24.5	55.5	7	40.0
432BU...	9	60-61	66	105	59.5	25.0	55.5	8	45.0