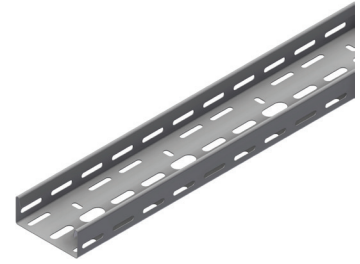


Product Data Sheet

OS ITNO	Hilti ITNO	Product name	Material
1301039	2310765	Cable tray SPB-LB40 CT-100-3000-1.0 SS	Stainless steel

Cable Tray slotted and unslotted with return flange mainly for electrical cable and light support.



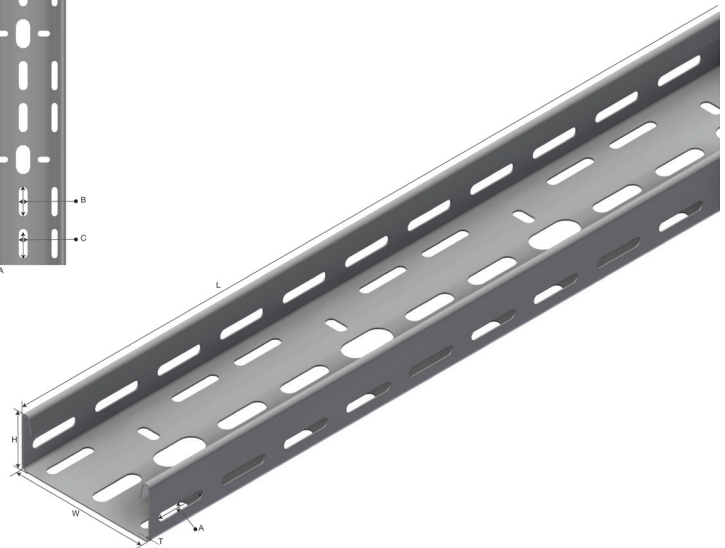
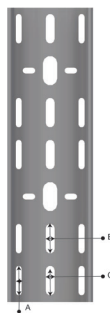
Additional information: On request: Other lengths, material thicknesses, Epoxy colours or special treatment.

1301039 consists of:

OS ITNO	Hilti ITNO	Product name	Qty.	Unit
87002	2298028	SPB-LB40 CT-100-3000-1.0 SS	1	STK


Characteristics

Name	Value
Weight (kg)	4.290
T Material Thickness (mm)	1.0
L Length (mm)	3000
H Height (mm)	40
W1 Width 1 (mm)	100
A Hole Size (mm)	7x35
B Hole Size (mm)	17x35
C Hole Size (mm)	11x35



Product images are a general representation of the product design however some variances may occur.

Product packaging information

F-PAK GTIN	Single piece	 7070693010399
D-PAK GTIN		 7070693010399