



CorePro LEDtube InstantFit HF T5



CorePro LEDtube HF 600mm HE 7.1W 865T5

CorePro LEDtube InstantFit HF T5 is the quick and easy way to replace T5 fluorescent tubes with a fast payback time. Designed with industry leading ballast compatibility, the product is ideal for your everyday lighting jobs. With simply plug-and-play installation, it improves energy efficiency immediately and lasts for longer than conventional T5.

Product data

General Information	
Cap-Base	G5
Nominal lifetime	50,000 hour(s)
Switching Cycle	50,000
Lighting Technology	LED
Flux measurement reference	Sphere
Light Technical	
Color Code	865 [CCT of 6500K]
Beam Angle (Nom)	200 degree(s)
Luminous Flux	1,050 lm
Luminous Efficacy (rated) (Nom)	147 lm/W
Color Designation	Cool Daylight
Correlated Color Temperature (Nom)	6500 K
Color Consistency	<6
Color rendering index (CRI)	80
LLMF At End Of Nominal Lifetime (Nom)	70 %
Photobiological safety according to EN 62471	RG0

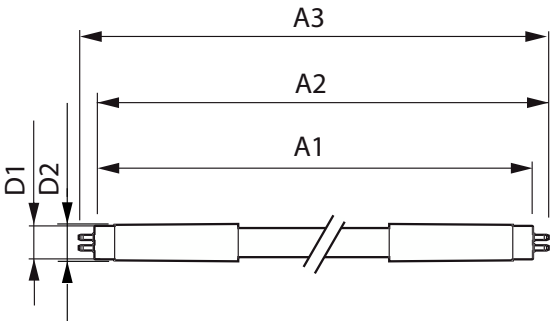
Operating and Electrical	
Input Frequency	30K to 100K Hz
Power Consumption	7.1 W
Lamp Current (Max)	350 mA
Lamp Current (Min)	150 mA
Starting Time (Nom)	0.5 s
Warm-up time to 60% light	0.5 s
Power Factor (Fraction)	0.9
Voltage (Nom)	40-70 V
LED alternative to fluorescent lamp power	14 W
Inrush current at mains	-
Max. lamp no. on MCB B type 10A - Mains	-
Max. lamp no. on MCB B type 10A – EM ballast without Compensation Capacitor.	-
Max. lamp no. on MCB B type 10A – EM ballast with Compensation Capacitor.	-
Max. lamp no. on MCB B type 16A - Mains	-
Max. lamp no. on MCB B type 16A – EM ballast without Compensation Capacitor.	-

CorePro LEDtube InstantFit HF T5

Max. lamp no. on MCB B type 16A – EM ballast with Compensation Capacitor.	-
Ballast Compatibility	HF
Temperature	
Ambient temperature range	-20 to +45 °C
T-Case Maximum (Nom)	45 °C
Controls and Dimming	
Dimmable	No
Mechanical and Housing	
Bulb Finish	Frosted
Bulb Material	Glass
Product Length	600 mm
Bulb Shape	T5
Approval and Application	
Energy Efficiency Class	D
Energy Saving Product	Yes
Approval Marks	RoHS compliance TUV CE marking KEMA Keur certificate

Energy Consumption kWh/1000 h	8 kWh
EPREL Registration Number	1880098
CE mark	Yes
EU RoHS compliant	Yes
Product Data	
Order product name	CorePro LEDtube HF 600mm HE 7.1W 865T5
Full product name	CorePro LEDtube HF 600mm HE 7.1W 865T5
Full product code	872016929544500
Order code	929003774302
Material Nr. (12NC)	929003774302
Net Weight (Piece)	0.085 kg
EAN/UPC - Product/Case	8720169295445
Numerator - Packs per outer box	10
EAN/UPC - Case	8720169295452

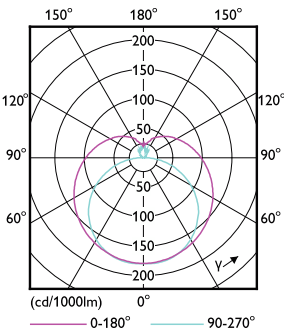
Dimensional drawing



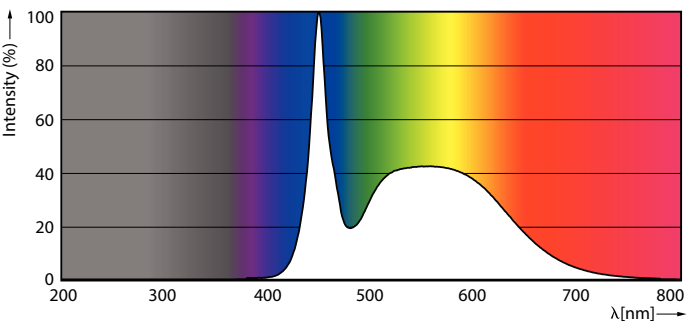
Product
CorePro LEDtube HF 600mm HE 7.1W 865T5

CorePro LEDtube InstantFit HF T5

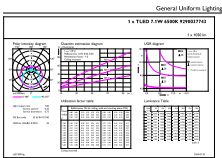
Photometric data



Light Distribution Diagram - CorePro LEDtube HF 600mm HE 7.1W 865T5



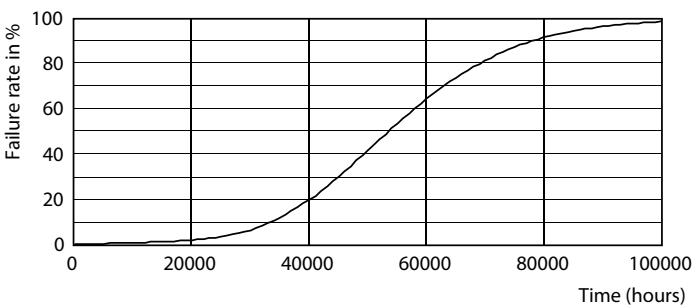
Spectral Power Distribution Colour - CorePro LEDtube HF 600mm HE 7.1W 865T5



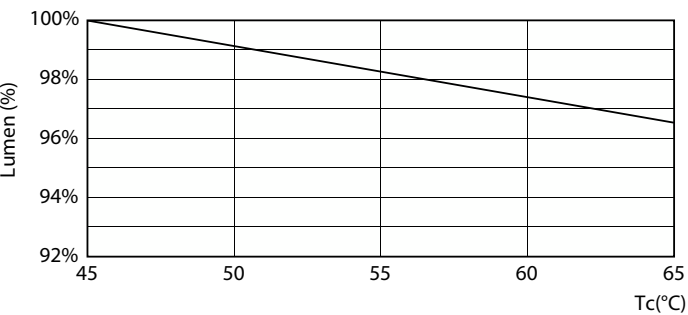
General uniform lighting

General uniform lighting - CorePro LEDtube HF 600mm HE 7.1W 865T5

Lifetime



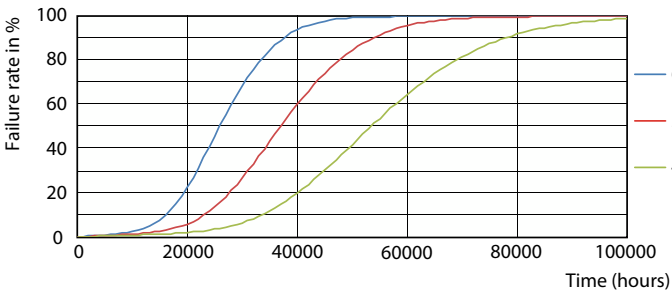
Life Expectancy Diagram



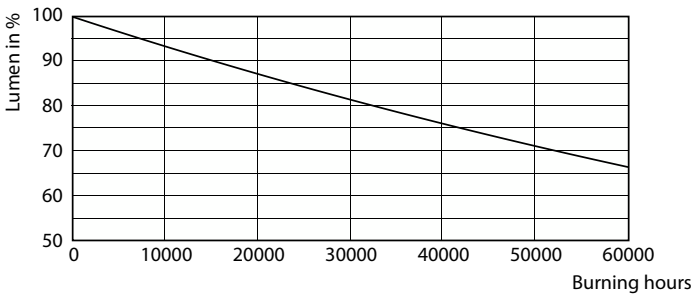
Lumen Maintenance Diagram - CorePro LEDtube HF 600mm HE 7.1W 865T5

CorePro LEDtube InstantFit HF T5

Lifetime



FailureRate



LifetimeVsTc

Lumen Maintenance Diagram - CorePro LEDtube HF 600mm HE 7.1W 865T5

