



CorePro LEDtube InstantFit HF T5



CorePro LEDtube HF 1500mm HE 20.5W 830T5

CorePro LEDtube InstantFit HF T5 is the quick and easy way to replace T5 fluorescent tubes with a fast payback time. Designed with industry leading ballast compatibility, the product is ideal for your everyday lighting jobs. With simply plug-and-play installation, it improves energy efficiency immediately and lasts for longer than conventional T5.

Product data

| General Information | |
|--|--------------------|
| Cap-Base | G5 |
| Nominal lifetime | 50,000 hour(s) |
| Switching Cycle | 50,000 |
| Lighting Technology | LED |
| Flux measurement reference | Sphere |
| Light Technical | |
| Color Code | 830 [CCT of 3000K] |
| Beam Angle (Nom) | 200 degree(s) |
| Luminous Flux | 2,800 lm |
| Luminous Efficacy (rated) (Nom) | 136 lm/W |
| Color Designation | White (WH) |
| Correlated Color Temperature (Nom) | 3000 K |
| Color Consistency | <6 |
| Color rendering index (CRI) | 80 |
| LLMF At End Of Nominal Lifetime (Nom) | 70 % |
| Photobiological safety according to EN 62471 | RG0 |

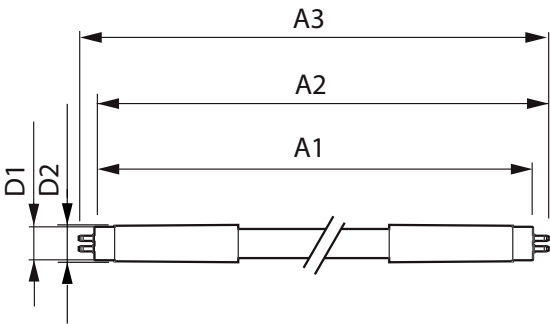
| Operating and Electrical | |
|--|----------------|
| Input Frequency | 30K to 100K Hz |
| Power Consumption | 20.5 W |
| Lamp Current (Max) | 350 mA |
| Lamp Current (Min) | 150 mA |
| Starting Time (Nom) | 0.5 s |
| Warm-up time to 60% light | 0.5 s |
| Power Factor (Fraction) | 0.9 |
| Voltage (Nom) | 80-130 V |
| LED alternative to fluorescent lamp power | 35 W |
| Inrush current at mains | - |
| Max. lamp no. on MCB B type 10A - Mains | - |
| Max. lamp no. on MCB B type 10A – EM ballast without Compensation Capacitor. | - |
| Max. lamp no. on MCB B type 10A – EM ballast with Compensation Capacitor. | - |
| Max. lamp no. on MCB B type 16A - Mains | - |
| Max. lamp no. on MCB B type 16A – EM ballast without Compensation Capacitor. | - |

CorePro LEDtube InstantFit HF T5

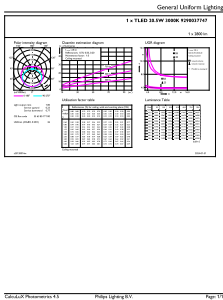
| | |
|---|---|
| Max. lamp no. on MCB B type 16A – EM ballast with Compensation Capacitor. | - |
| Ballast Compatibility | HF |
| Temperature | |
| Ambient temperature range | -20 to +45 °C |
| T-Case Maximum (Nom) | 45 °C |
| Controls and Dimming | |
| Dimmable | No |
| Mechanical and Housing | |
| Bulb Finish | Frosted |
| Bulb Material | Glass |
| Product Length | 1,500 mm |
| Bulb Shape | T5 |
| Approval and Application | |
| Energy Saving Product | Yes |
| Approval Marks | RoHS compliance TUV CE marking KEMA Keur certificate |

| | |
|---------------------------------|--|
| Energy Consumption kWh/1000 h | 21 kWh |
| EPREL Registration Number | 1880101 |
| Energy Efficiency Class | E |
| CE mark | Yes |
| EU RoHS compliant | Yes |
| Product Data | |
| Order product name | CorePro LEDtube HF 1500mm HE 20.5W 830T5 |
| Full product name | CorePro LEDtube HF 1500mm HE 20.5W 830T5 |
| Full product code | 872016929552000 |
| Order code | 929003774702 |
| Material Nr. (12NC) | 929003774702 |
| Net Weight (Piece) | 0.196 kg |
| EAN/UPC - Product/Case | 8720169295520 |
| Numerator - Packs per outer box | 10 |
| EAN/UPC - Case | 8720169295537 |

Dimensional drawing

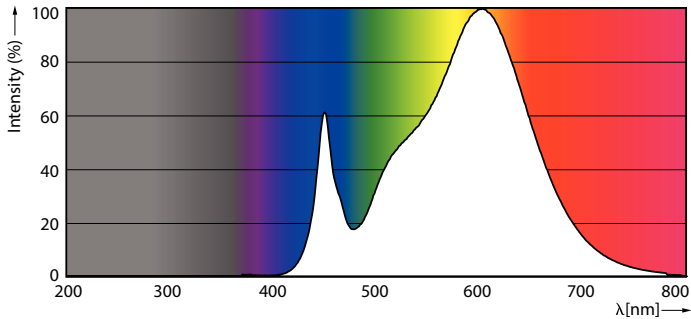


Photometric data



General uniform lighting - CorePro LEDtube HF 1500mm HE 20.5W 830T5

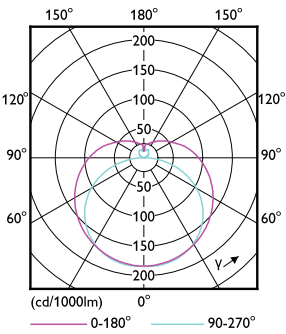
| |
|--|
| Product |
| CorePro LEDtube HF 1500mm HE 20.5W 830T5 |



Spectral Power Distribution Colour - CorePro LEDtube HF 1500mm HE 20.5W 830T5

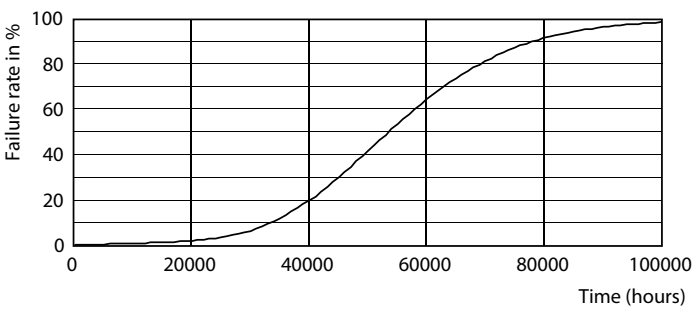
CorePro LEDtube InstantFit HF T5

Photometric data

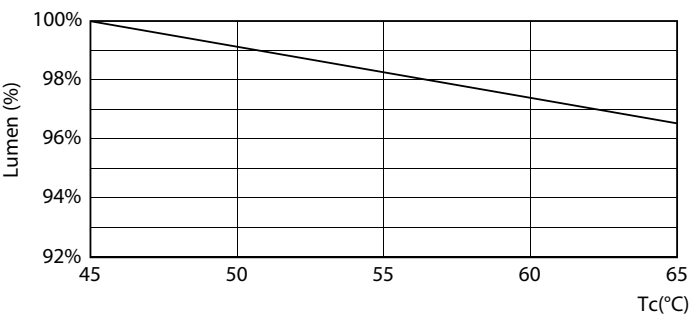


Light Distribution Diagram - CorePro LEDtube HF 1500mm HE 20.5W 830T5

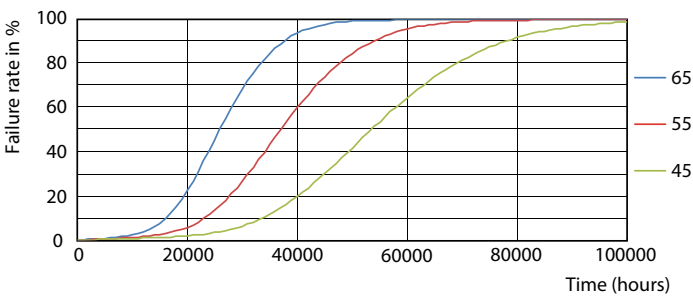
Lifetime



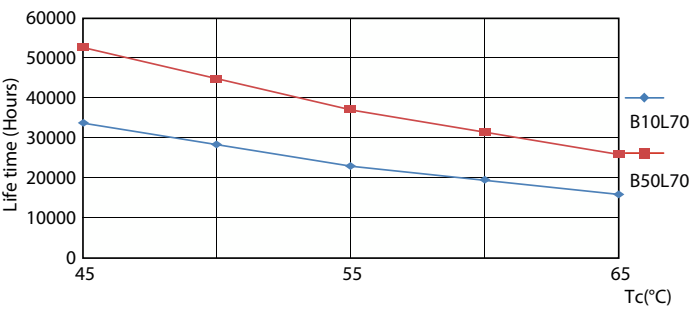
Life Expectancy Diagram



Lumen Maintenance Diagram - CorePro LEDtube HF 1500mm HE 20.5W 830T5



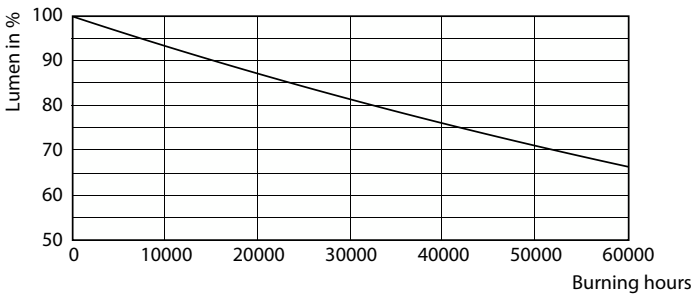
FailureRate



LifetimeVsTc

CorePro LEDtube InstantFit HF T5

Lifetime



Lumen Maintenance Diagram - CorePro LEDtube HF 1500mm HE 20.5W
830T5

