



# CorePro LED PLS



## CorePro LED PLS 5W 830 2P G23

The Philips CorePro LED PLS integrates a LED light source into a traditional fluorescent form factor. This product is the ideal solution for uplampping in general lighting applications: it meets basic lighting requirements, offers significant energy savings, and is environment-friendly.

### Product data

General Information	
Cap-Base	G23
Nominal lifetime	30,000 hour(s)
Switching Cycle	50,000
Lighting Technology	LED
Flux measurement reference	Sphere
Light Technical	
Color Code	830 [CCT of 3000K]
Beam Angle (Nom)	120 degree(s)
Luminous Flux	520 lm
Luminous Efficacy (rated) (Nom)	104 lm/W
Color Designation	White (WH)
Correlated Color Temperature (Nom)	3000 K
Color Consistency	<6
Color rendering index (CRI)	82
LLMF At End Of Nominal Lifetime (Nom)	70 %
Flickering value (PstLM) - Flickering value as per EN 61000-3-3	1
Stroboscopic effect visibility measure (SVM)	0.4
Photobiological safety according to EN 62471	RG0

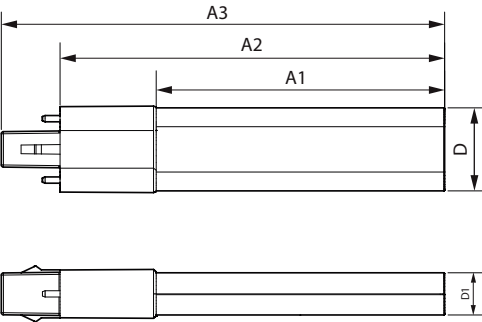
Operating and Electrical	
Input Frequency	50 to 60 Hz
Power Consumption	5 W
Lamp Current (Nom)	31 mA
Starting Time (Nom)	0.5 s
Warm-up time to 60% light	0.5 s
Power Factor (Fraction)	0.9
Voltage (Nom)	220-240 V
LED alternative to fluorescent lamp power	9/11 W
Inrush current at mains	6.6
Max. lamp no. on MCB B type 10A - Mains	116
Max. lamp no. on MCB B type 10A – EM ballast without Compensation Capacitor.	355
Max. lamp no. on MCB B type 10A – EM ballast with Compensation Capacitor.	-
Max. lamp no. on MCB B type 16A - Mains	186
Max. lamp no. on MCB B type 16A – EM ballast without Compensation Capacitor.	569
Max. lamp no. on MCB B type 16A – EM ballast with Compensation Capacitor.	-
Ballast Compatibility	EM/Mains

CorePro LED PLS

Temperature	
Ambient temperature range	-20 to +45 °C
T-Case Maximum (Nom)	50 °C
Controls and Dimming	
Dimmable	No
Mechanical and Housing	
Bulb Finish	Frosted
Bulb Material	Plastic
Product Length	0 mm
Bulb Shape	PL-S
Approval and Application	
Energy Saving Product	Yes
Approval Marks	RoHS compliance CE marking KEMA Keur certificate
Energy Consumption kWh/1000 h	5 kWh

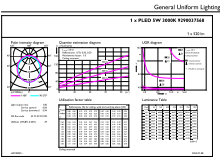
EPREL Registration Number	1820625
Energy Efficiency Class	F
CE mark	Yes
EU RoHS compliant	Yes
Product Data	
Order product name	CorePro LED PLS 5W 830 2P G23
Full product name	CorePro LED PLS 5W 830 2P G23
Full product code	872016928658000
Order code	929003756802
Material Nr. (12NC)	929003756802
Net Weight (Piece)	0.043 kg
EAN/UPC - Product/Case	8720169286580
Numerator - Packs per outer box	20
EAN/UPC - Case	8720169286597

Dimensional drawing



Product	D1	D2	A1	A2	A3
CorePro LED PLS 5W 830 2P G23	34 mm		108 mm	144 mm	166 mm

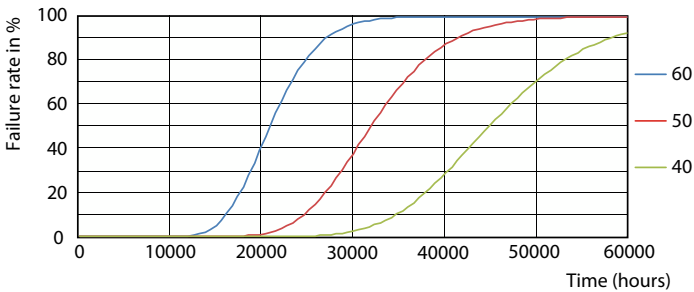
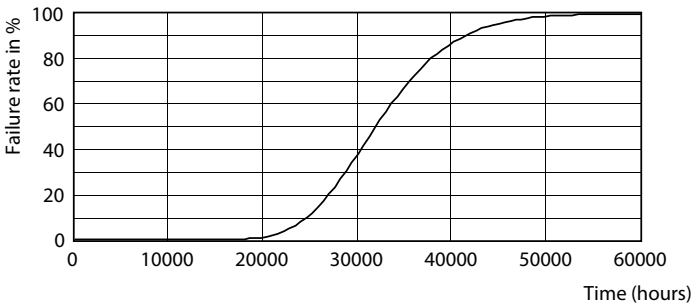
Photometric data



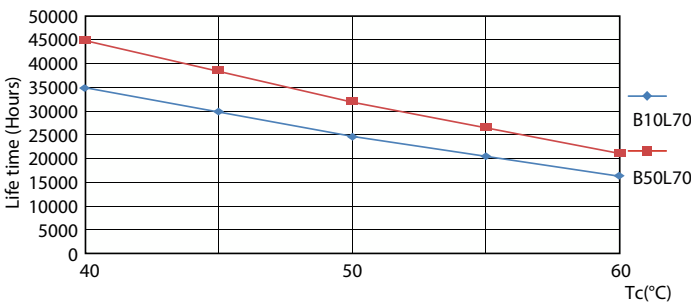
General uniform lighting - CorePro LED PLS 5W 830 2P G23

CorePro LED PLS

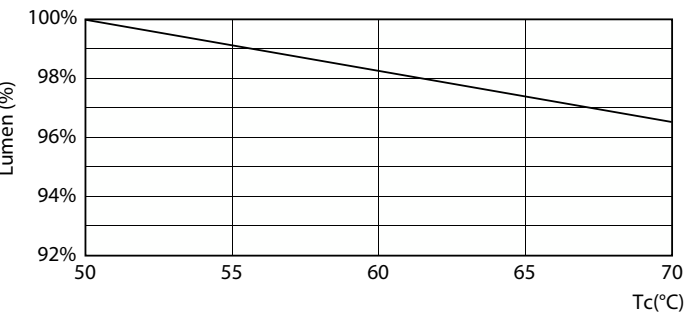
Lifetime



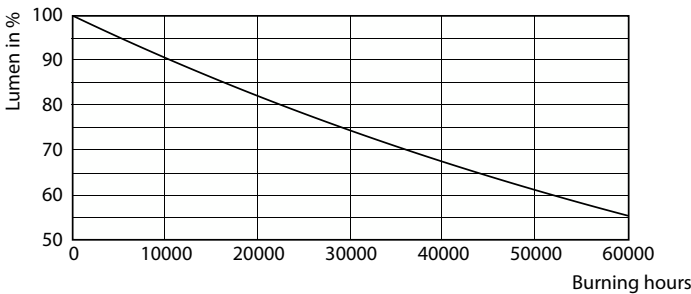
Life Expectancy Diagram



FailureRate



LifetimeVsTc



Lumen Maintenance Diagram - CorePro LED PLS 5W 830 2P G23

Lumen Maintenance Diagram - CorePro LED PLS 5W 830 2P G23

## CorePro LED PLS

