



CorePro LED PLL



CorePro LED Urban PLL Mains 13W 830

Philips CorePro LED PLL is the ideal uplamping solution for downlights & luminaires in a wide range of general lighting applications. It integrates a LED light source into a traditional fluorescent form factor to offer superb energy savings over a lifetime that's twice as long as fluorescent alternatives.

Product data

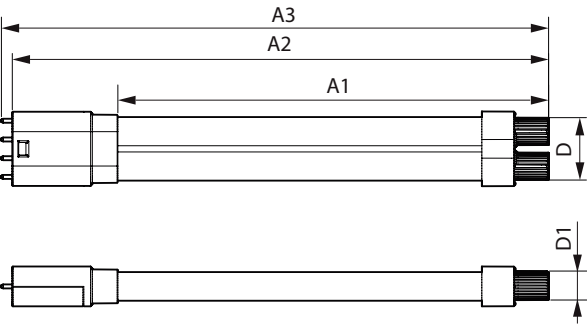
General Information	
Cap-Base	2G11
Nominal lifetime	30,000 hour(s)
Switching Cycle	200,000
Lighting Technology	LED
Flux measurement reference	Sphere
Light Technical	
Color Code	830 [CCT of 3000K]
Beam Angle (Nom)	360 degree(s)
Luminous Flux	1,520 lm
Luminous Efficacy (rated) (Nom)	116 lm/W
Color Designation	White (WH)
Correlated Color Temperature (Nom)	3000 K
Color Consistency	<6
Color rendering index (CRI)	80
LLMF At End Of Nominal Lifetime (Nom)	70 %
Flickering value (PstLM) - Flickering value as per EN 61000-3-3	1
Stroboscopic effect visibility measure (SVM)	0.4
Photobiological safety according to EN 62471	RG0

Operating and Electrical	
Input Frequency	50 to 60 Hz
Power Consumption	13 W
Lamp Current (Nom)	70 mA
Starting Time (Nom)	0.5 s
Warm-up time to 60% light	0.5 s
Power Factor (Fraction)	0.9
Voltage (Nom)	220-240 V
LED alternative to fluorescent lamp power	24 W
Inrush current at mains	3.4
Max. lamp no. on MCB B type 10A - Mains	140
Max. lamp no. on MCB B type 10A – EM ballast without Compensation Capacitor.	-
Max. lamp no. on MCB B type 10A – EM ballast with Compensation Capacitor.	-
Max. lamp no. on MCB B type 16A - Mains	225
Max. lamp no. on MCB B type 16A – EM ballast without Compensation Capacitor.	-
Max. lamp no. on MCB B type 16A – EM ballast with Compensation Capacitor.	-
Ballast Compatibility	Mains

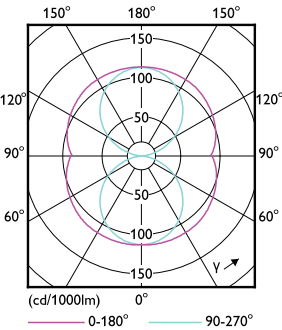
CorePro LED PLL

Temperature	
Ambient temperature range	-30 to +45 °C
T-Case Maximum (Nom)	60 °C
Controls and Dimming	
Dimmable	No
Mechanical and Housing	
Bulb Finish	Clear
Bulb Material	Plastic
Product Length	300 mm
Bulb Shape	PL-L
Approval and Application	
Energy Efficiency Class	E
Energy Saving Product	Yes
Approval Marks	RoHS compliance CE marking KEMA Keur certificate
Energy Consumption kWh/1000 h	13 kWh

Dimensional drawing



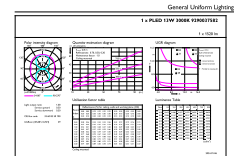
Photometric data



Light Distribution Diagram - CorePro LED Urban PLL Mains 13W 830

EPREL Registration Number	1826742
CE mark	Yes
EU RoHS compliant	Yes
Product Data	
Order product name	CorePro LED Urban PLL Mains 13W 830
Full product name	CorePro LED Urban PLL Mains 13W 830
Full product code	872016928716700
Order code	929003758202
Material Nr. (12NC)	929003758202
Net Weight (Piece)	0.125 kg
EAN/UPC - Product/Case	8720169287167
Numerator - Packs per outer box	10
EAN/UPC - Case	8720169287174

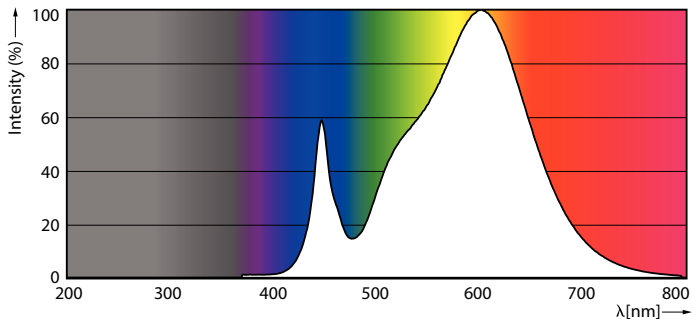
Product	D1	D	A1	A2	A3
CorePro LED Urban PLL Mains 13W 830	17 mm	37 mm	253 mm	315 mm	321 mm



General uniform lighting - CorePro LED Urban PLL Mains 13W 830

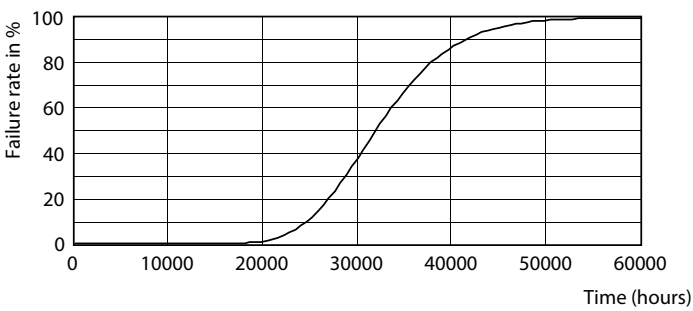
CorePro LED PLL

Photometric data

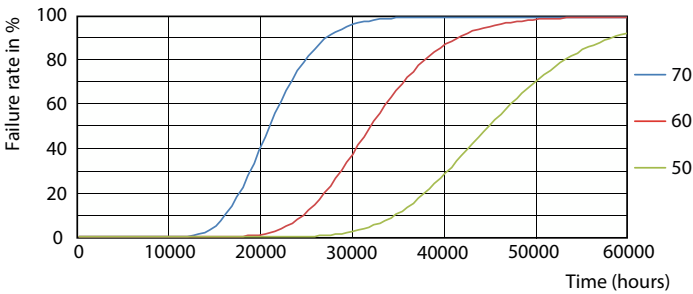


Spectral Power Distribution Colour - CorePro LED Urban PLL Mains 13W 830

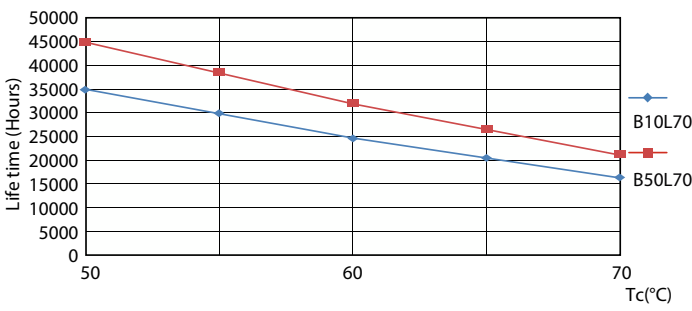
Lifetime



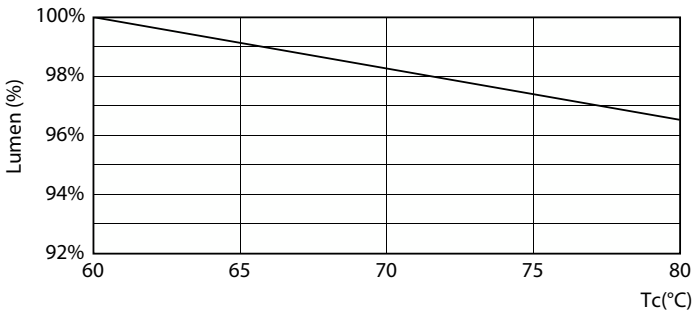
Life Expectancy Diagram



FailureRate



LifetimeVsTc



Lumen Maintenance Diagram - CorePro LED Urban PLL Mains 13W 830

CorePro LED PLL

Lifetime



Lumen Maintenance Diagram - CorePro LED Urban PLL Mains 13W 830

