

SNMP Web Pro

User's Manual

Management Software for Uninterruptible Power Supply Systems

Table of Contents

1. Overview.....	1
1.1 Introduction.....	1
1.2 Features	1
1.3 Overlook	2
1.4 Installation and Connection	2
1.5 Configuration.....	3
1.6 Monitoring	4
2. SNMP web pro GUI.....	6
3. Function Menu.....	7
3.1 Information	7
3.2 UPS setting	8
3.3 Control	9
3.4. System configuration	10
3.5. Log	20
3.6. Help.....	21
4. Service list.....	23

1. Overview

1.1 Introduction

This SNMP web pro can provide web server to monitor and manage multiple UPSs in networked environment. It can detect temperature and humidity for the environment via connecting to EMD (Environmental Monitoring Device). The same port is also applied for data transmission. Simply connect to SMS modem for SMS sending with a RJ11 to DB9 cable.

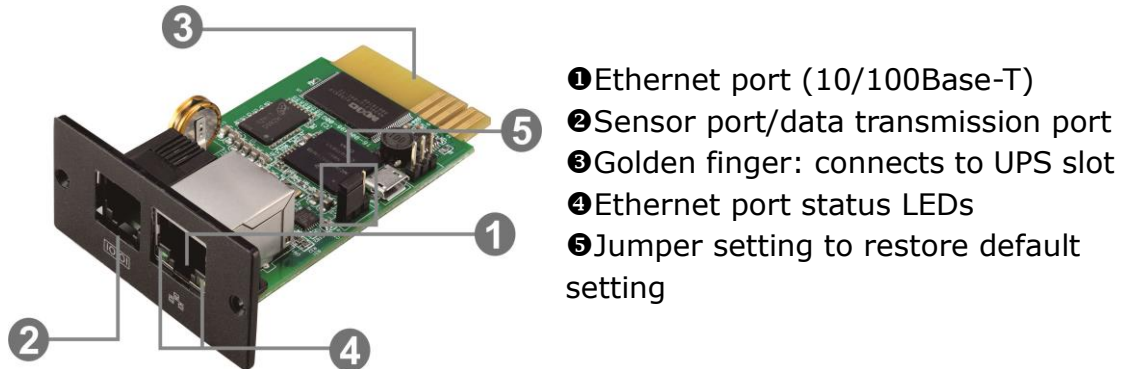
It can not only prevent data loss from power outage and safely shutdown systems, but also store programming data and scheduled shut down the UPS. All UPS warning and fault event records can be kept in SNMP web pro.

The intended use of this product is connectivity to private networks only. If connection to public networks are needed, it is the users/customers responsibility to apply additional security measures such as firewall, managed switches, VPN etc.

1.2 Features

- Open monitor via Web Browser.
- Offer SNMP MIB to monitor UPS status.
- Automatically detect and exchange 10M/100M Fast Ethernet.
- Support wake-on-LAN function.
- Supported protocol such as TCP/IP, UDP, SNMP, SMTP, SNTP, HTTP, HTTPS, SSL, SSH, IPV4/IPV6, DHCP and so on.
- It can prevent data loss from power outage and safely shut down systems.
- Able to store event log more than 200,000 threads, including UPS warnings, faults and EMD warnings, operation data logs from web users. It will be stored safely without loss even when power failure occurs.
- Support daily reports for event log and data log.
- Scheduled UPS on/off and battery test.
- Support EMD monitoring and SMS sending.
- Equipped with real-time clock to record log with date and keep running up to 7 days without power connected.

1.3 Overlook



Ethernet port status LEDs:

100M LED (Green)	On	Port is operating at 100Mbit/s
	Off	Current web bandwidth is 10Mbit/s
Link status LED (Yellow)	Flash	Link Active
	Off	Card is not connected to the network

Pin assignment for Jumper:

Pin #	Status	Description
Pin 1 & Pin 2	Closed	Normal operation
Pin 2 & Pin 3	Closed	After re-connecting utility, the IP address of SNMP web card and password will restore to default setting. Default static IP address: (192.168.102.230) Default password: Q1f@18*_~zYLyaM

NOTICE: After setting is restored to default, be sure to change the jumper setting to connect Pin 1 and Pin 2 for normal operation.

1.4 Installation and Connection

Installation

If using SNMP web pro, please follow below steps to install card first:

Step 1: Remove the cover of intelligent slot on the back panel of UPS and retain the screws

Step 2: Slide the card into the open slot and secure with the screws from step 1. (see chart 1-1)



Chart 1-1

Step 3: Plug Ethernet cable to the Ethernet port (RJ-45) on the SNMP web pro.

Step 4: If an EMD (environmental monitoring device) is used, another RJ11 cable is required. Connect one end to the sensor port on the SNMP web pro and the other end to the EMD.

1.5 Configuration

- a) Please install SNMP web manager wizard in your PC. After software is installed successfully, the Installer will leave a shortcut icon on your desktop.



Chart 1-4

- b) Enter specific IP address to search all SNMP devices in LAN. The SNMP web manager is default applied static IP address as 192.168.102.230, default subnet mask as 255.255.255.0, and default gateway as 192.168.102.254. Users can modify IP address or apply DHCP mode through web server of SNMP web pro card, SSH Client or SNMP Web Manager.

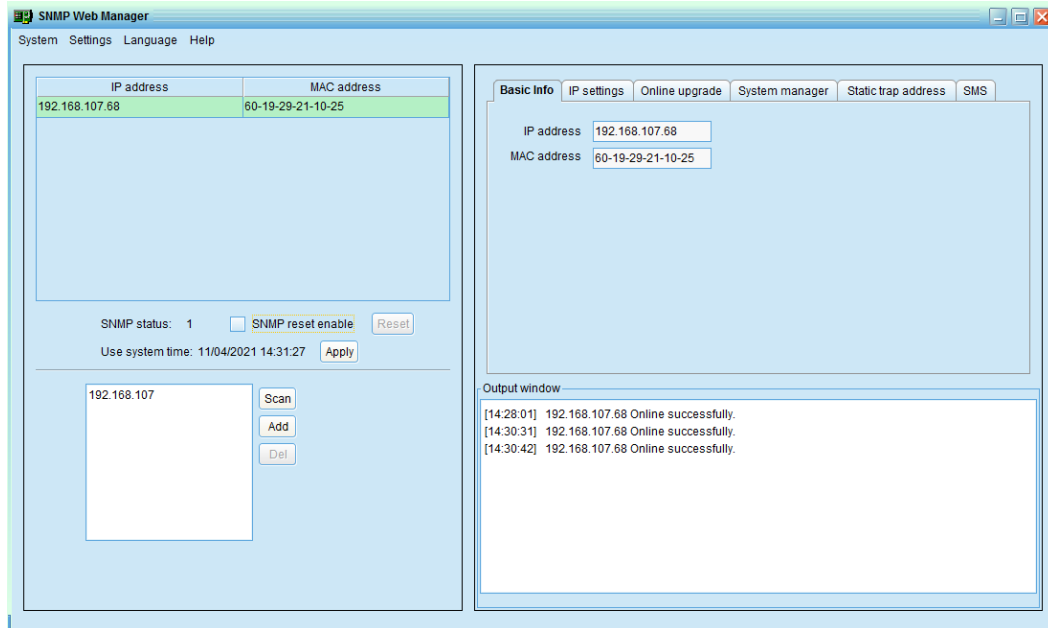


Chart 1-5

- c) User can modify IP setting, online upgrade, password management, and static trap address setting in SNMP Web Manager screen. It is necessary to enter password for any medications. The default password is Q1f@18*_~zYLyaM. Please check SNMP Web Manager User Manual for detailed configuration.

Connection

SNMP Web Pro uses DHCP by default. If there is no DHCP server in the LAN, the SNMP web pro will use the default static network parameters after 5 minutes. The SNMP web pro is default applied static IP address as 192.168.102.230, default subnet mask as 255.255.255.0, and default gateway as 192.168.102.254. Users can modify IP address or apply DHCP mode through web server of SNMP web pro.

1.6 Monitoring

There are two ways to monitor:

- a) Simply enter https address (https://192.168.102.230) in web browser to access web server directly. Refer to Chart 1-2.

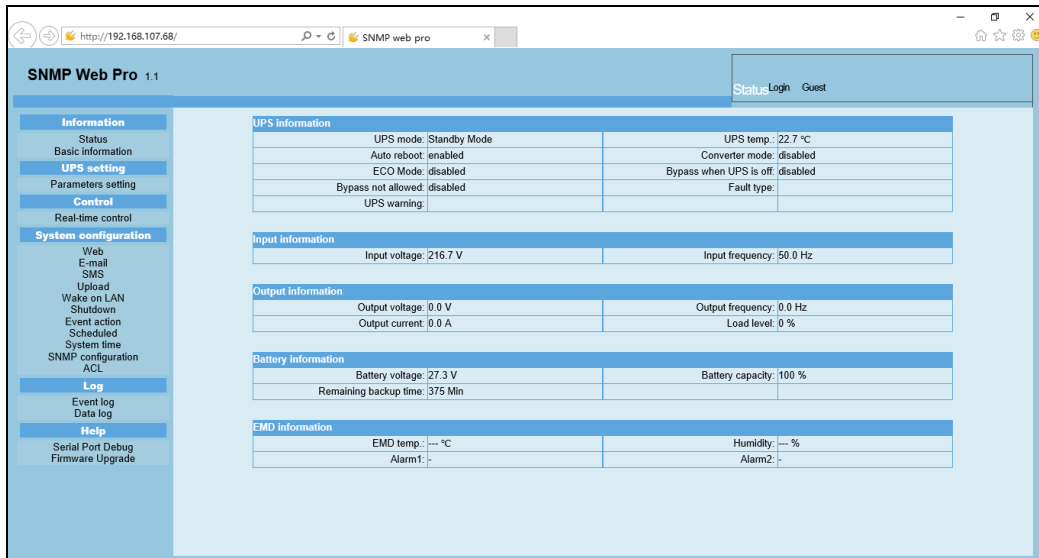


Chart 1-2

b) Installed ViewPower Pro software to monitor SNMP web pro. Refer to Chart 1-3.

Please check ViewPower Pro User Manual for detailed monitoring.

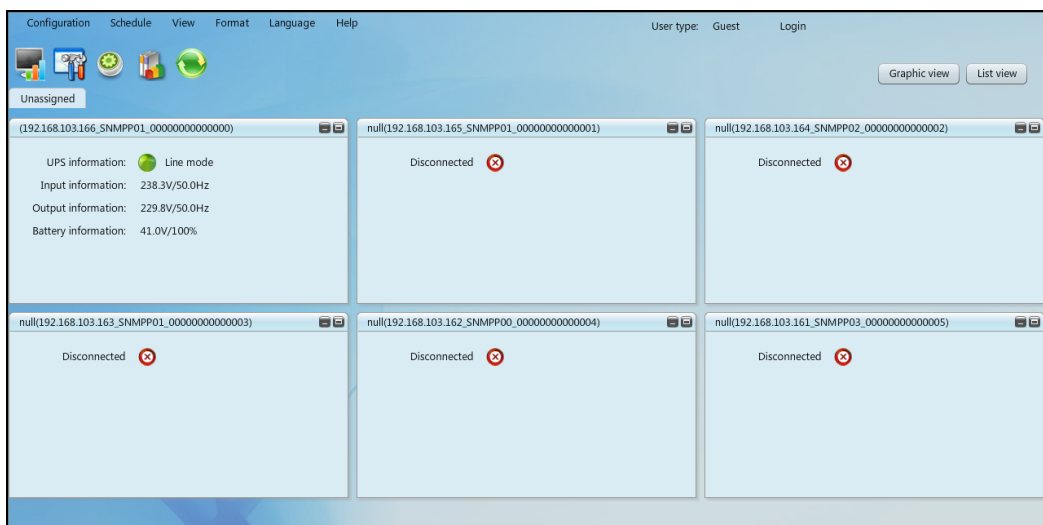


Chart 1-3

2. SNMP web pro GUI

SNMP web pro GUI includes function menu, login section and main screen. Refer to Chart 2-1:

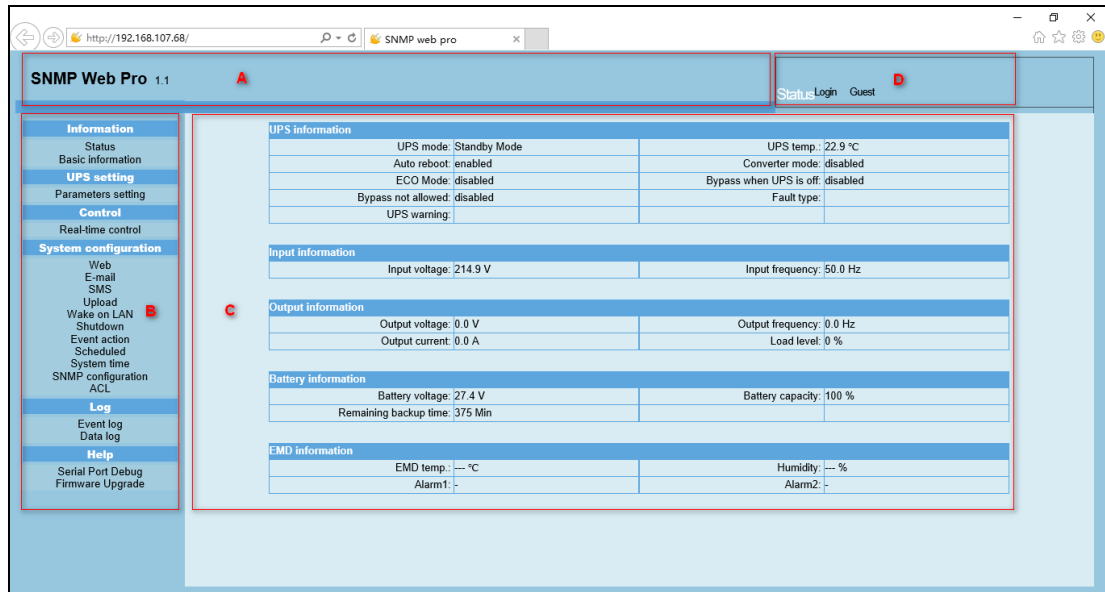


Chart 2-1

A .SNMP web pro GUI version

B .Function Menu

It offers complete tool-set for navigation and setting the GUI.

C .Main Screen

It will display information and/or control alternatives according to function menu selected.

D. Login section

It shows user type for current login user. The default password for administrator is Q1f@18*_~zYLyaM



It is recommended to change the password after the first login. Please refer to 3.4.9.

3. Function Menu

3.1 Information

3.1.1. Status

Select Information >> Status. Refer to Chart 3-1. It's shown real-time monitored UPS data including input, output, UPS, battery information and environmental information in table format.

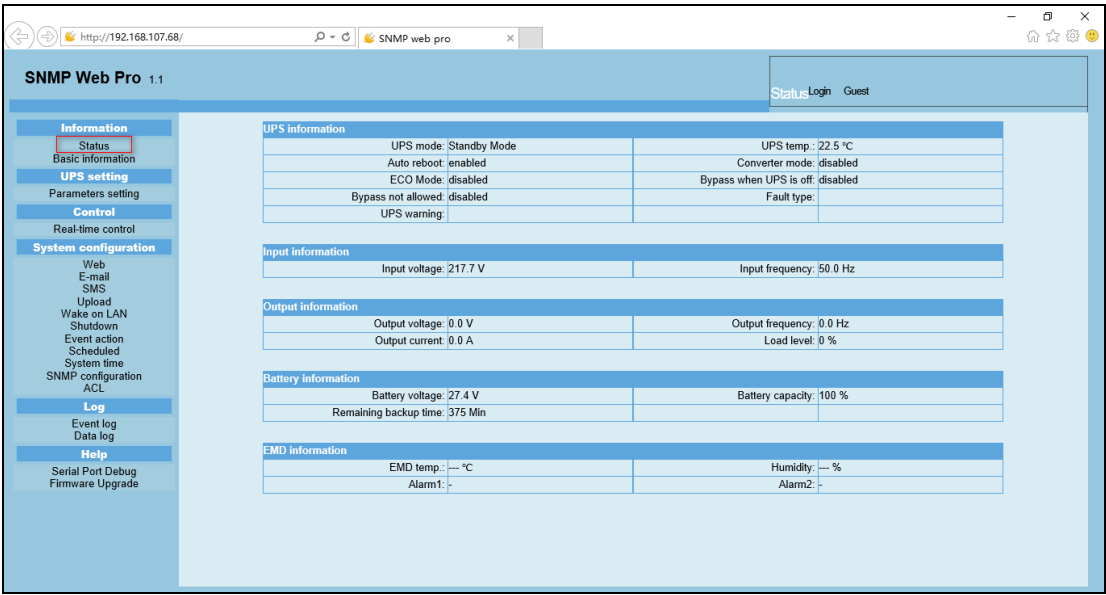


Chart 3-1

3.1.2. Basic information

Select Information>>Basic information. It includes UPS basic information, battery information and UPS rated information. Refer to Chart 3-2.

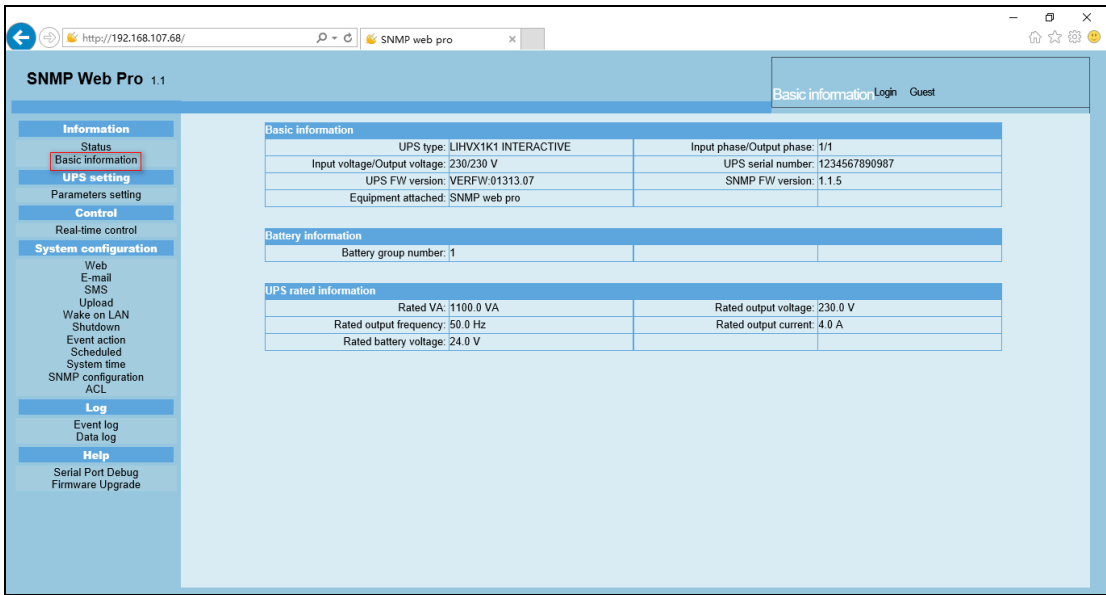


Chart 3-2

3.2 UPS setting

3.2.1 Parameters setting

Some UPS functions can be set and changed via software. Parameter setting includes backup time setting for programmable outlet (P1), battery number setting, voltage and frequency range setting for bypass mode and voltage range setting for ECO mode.

Select UPS setting >> Parameters setting. Refer to Chart 3-4.

SNMP Web Pro 1.1

Parameters setting Login Guest

Information

- Status
- Basic information
- UPS setting**
- Parameters setting
- Control
- Real-time control
- System configuration
 - Web
 - E-mail
 - SMS
 - Upload
 - Wake on LAN
 - Shutdown
 - Event action
 - Scheduled
 - System time
 - SNMP configuration
 - AOL
- Log
 - Event log
 - Data log
- Help
 - Serial Port Debug
 - Firmware Upgrade

Alarm control: ☒ Enable ☐ Disable

Alarm at bypass mode: ☒ Enable ☐ Disable

Alarm at battery mode: ☒ Enable ☐ Disable

Auto reboot: ☒ Enable ☐ Disable

Bypass when UPS is off: ☒ Enable ☐ Disable

Converter mode: ☒ Enable ☐ Disable

ECO mode: ☒ Enable ☐ Disable

Advanced ECO mode: ☒ Enable ☐ Disable

Green power function: ☒ Enable ☐ Disable

Cold start: ☒ Enable ☐ Disable

Bypass not allowed: ☒ Enable ☐ Disable

Battery deep-discharge protection: ☒ Enable ☐ Disable

Site fault detection: ☒ Enable ☐ Disable

P1 programmable outlet control: ☒ Enable ☐ Disable

Battery numbers setting

Numbers in parallel:

Voltage and frequency range for bypass mode

Max. voltage: V

Min. voltage: V

Max. frequency: Hz

Min. frequency: Hz

Voltage range for ECO mode

Max. voltage: V

Min. voltage: V

Chart 3-4

Note: Different UPSs may access different parameter setting.

1. Select the functions by clicking "Enable" or "Disable" button. Change the numbers by clicking up-down arrows or modify the numbers directly in the number column.
2. Click "Apply" button to save the settings. Each function setting is saved by clicking "Apply" button in each section.
3. Click "Default" button to recover the default setting.

Note: Any functions which are not supported by UPS will not be able to access.

- Alarm Control: If enabled, UPS alarm will be activated. Vice versa.
- Alarm at bypass mode: If enabled, UPS alarms when it's working at bypass mode. Vice versa.
- Alarm at battery mode: If disabled, UPS will not alarm when it's working at battery mode. Vice versa.
- Auto reboot: If enabled, UPS will auto recover when AC is recovering. Vice versa.
- Bypass when UPS is off: If enabled, AC will directly provide power to connected devices when UPS is off. Vice versa.

- Converter mode: If enabled, the UPS will operate in converter mode. Vice versa.
- ECO mode: If enabled, the UPS will operate in ECO mode when input voltage is within acceptable range. Vice versa.
- Battery open status check: If enabled, the monitored UPS will check if the battery connection is ok or not when UPS is turned on.
- Cold start: If disabled, the UPS can be turned on only when AC is normally connected to UPS. Vice versa.
- Bypass not allowed: If enabled, the UPS will not transfer to bypass mode under any conditions. If disabled, the UPS will be allowed to transfer to bypass mode according to UPS internal setting.
- Battery deep-discharge protection: If enabled, the monitored UPS shuts down in accordance with the condition of battery and load on battery mode to protect battery. Vice versa.
- Site fault detection: If enabled, the monitored UPS will beep when the input neutral and hot wires are reversed. Vice versa.
- P1 Programmable outlet control (battery mode): If enabled, when UPS is running at battery mode, it will cut off P1 outlets after backup setting time arrives. If disabled, UPS will provide continuous power to P1 outlets until the battery is running out.
- Outlet setting: Users can set limited backup time for P1 outlets when UPS is on battery mode.
- Battery numbers setting: Set battery numbers in parallel.
- Voltage and frequency range for bypass mode: Set acceptable voltage and frequency range in bypass mode
 - ✧ Maximum and minimum voltage: When UPS is on bypass mode and input voltage is out of setting range, UPS will enter battery mode.
 - ✧ Maximum and minimum frequency: When UPS is on bypass mode and input frequency is out of setting range, UPS will enter battery mode.
- Voltage range for ECO mode: Set acceptable voltage range for ECO mode.

3.3 Control

3.3.1. Real-time control

Select Control >> Real-time control. Refer to Chart 3-5.

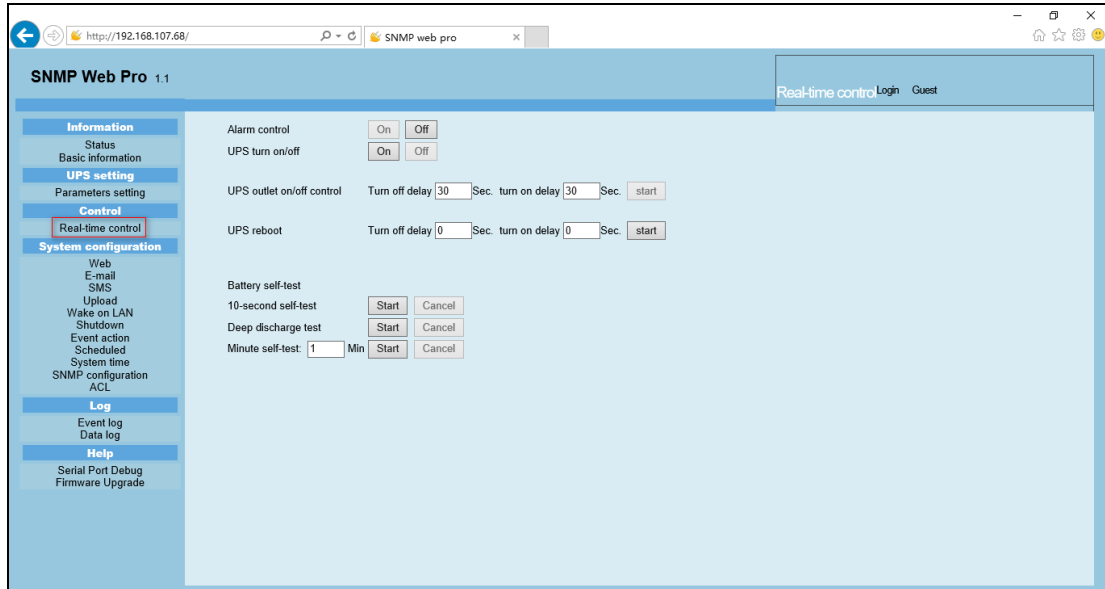


Chart 3-5

You can real-time control the UPS by executing following operation:

- UPS turn On/Off: Click "On" to turn on the UPS and "Off" to turn off the UPS immediately.
- Battery Self-Test: It offers three types of battery self-test: 10-second self-test, deep discharge test, and self-defined self-test. Simply clicking "Start" button from each type. It will execute the self-test immediately.

3.4. System configuration

3.4.1. Web user

It configures the authority to access SNMP web pro. Please enter access ID and password in each column. There is no limitation to access control in default setting. It is also allowed for http and https modification. The default setting is 80 for http and 443 for https. If any modification for adding web users, deleting web users or port re-configuration, it's necessary to click "Restart Web Server" button to restart web server to activate all modifications. Refer to Chart 3-6.



HTTP is an insecure protocol without encryption. It is recommended to be disabled.

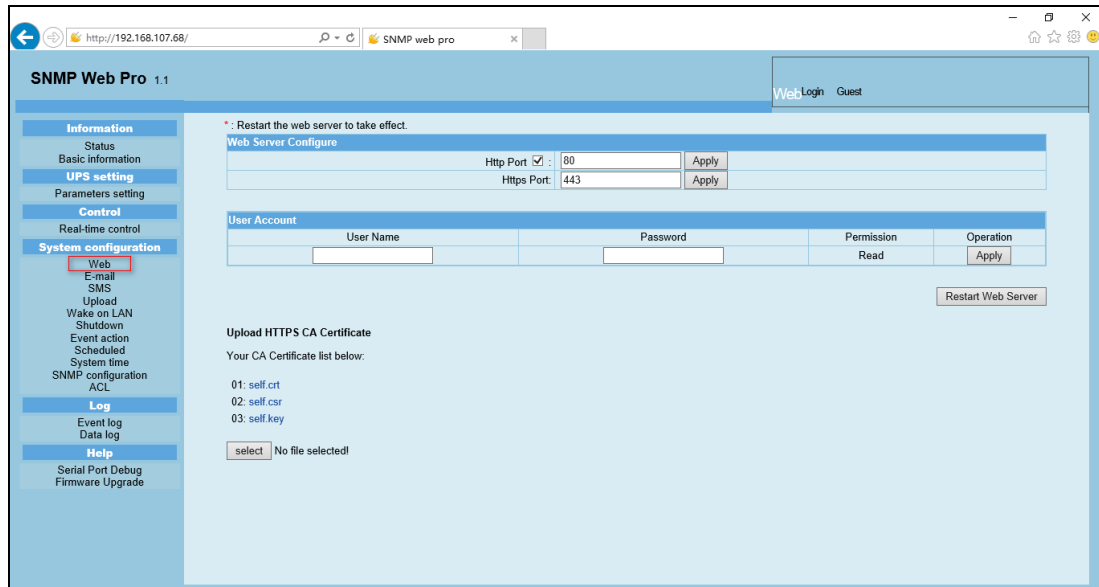


Chart 3-6

3.4.2. E-mail

It's allowed to send alarm mail by SMTP server. To use this function, the e-mail service must be correctly configured. All values in this function page are default empty. This action can't be executed without the SMTP information, e-mail account and password. Besides, the sender account should be allowed for SMTP/POP3 forwarding.

Select System Configuration >> E-mail. Refer to Chart 3-7

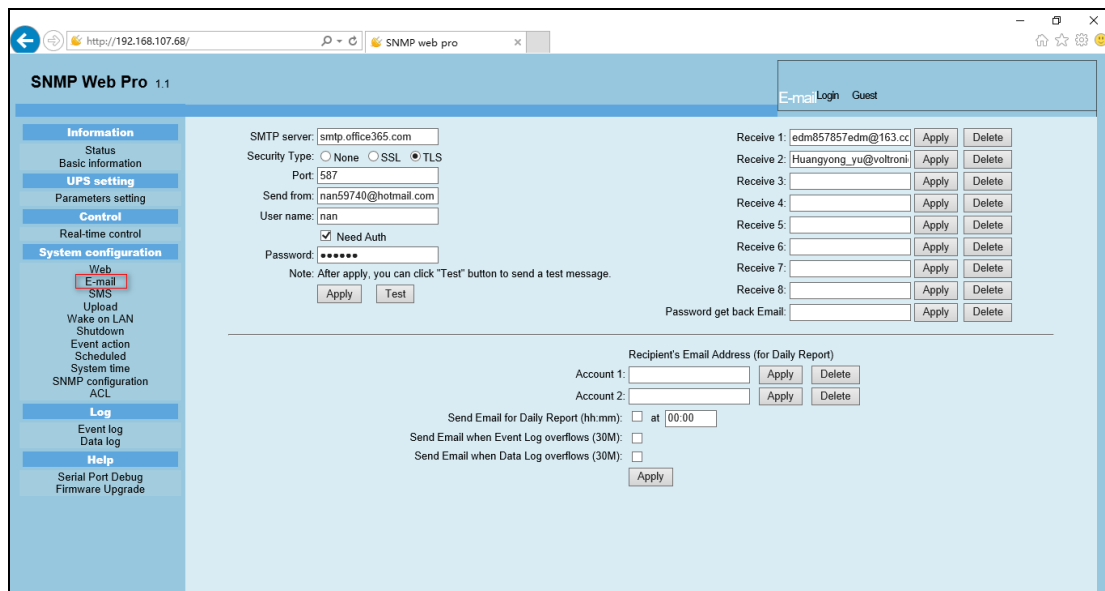


Chart 3-7

1. Enter SMTP server, security type (supported encryption from SMTP server), SMTP port, sender's E-mail address, user name and password. Click checkbox of "Need Auth" for password verify.
2. Enter correct e-mail accounts in Receive list. Then, click "Apply" to

- add into receivers list. Click "Delete" button to delete e-mail account.
- Click "Apply" to save the changes. The "Test" button can be used to send a test e-mail to all receivers to confirm correct operation. When the test e-mails are successfully sent to specific recipients, it will pop up a successful message on operated PC. Otherwise, it will pop up a failure dialog to indicate there is an error for parameter setting.
 - You may decide who will receive daily report e-mail at specific duration. Please enter recipient's Email Address and timer into columns. Then, click "Apply" button to set up this action. You also can configure who will receive alarm e-mail when event log exceeds 100 or data log exceeds 50 records. Please click checkbox of selections.

3.4.3. SMS

- Sending SMS By Server

It is required to have service software available such as ViewPower Pro. In the event of an alarm condition occurring, a message about UPS status will be sent to the specified users via mobile phone. Please refer to Chart 3-8 b.

- Sending SMS By Serial Port

It is used EMD port as data transmission to send SMS without any service software. Please configure Baud rate of GSM Modem as 9600 and then connect data transmission port (□) of SNMP web port card to GSM Modem with a RJ11 to DB9 cable. Please refer to Chart 3-8 a for detailed wiring.

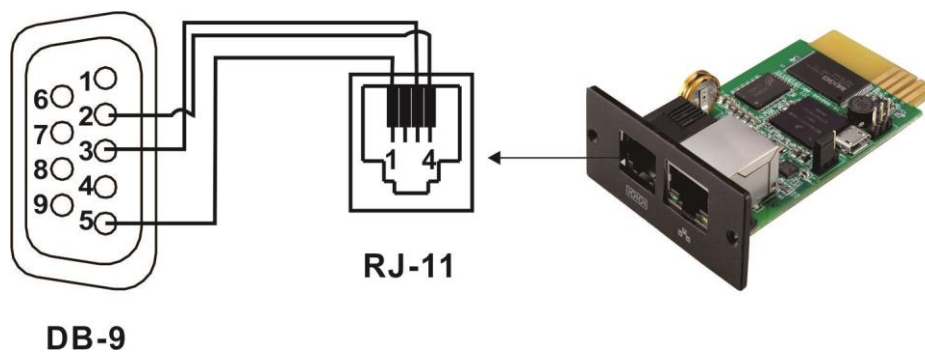


Chart 3-8 a

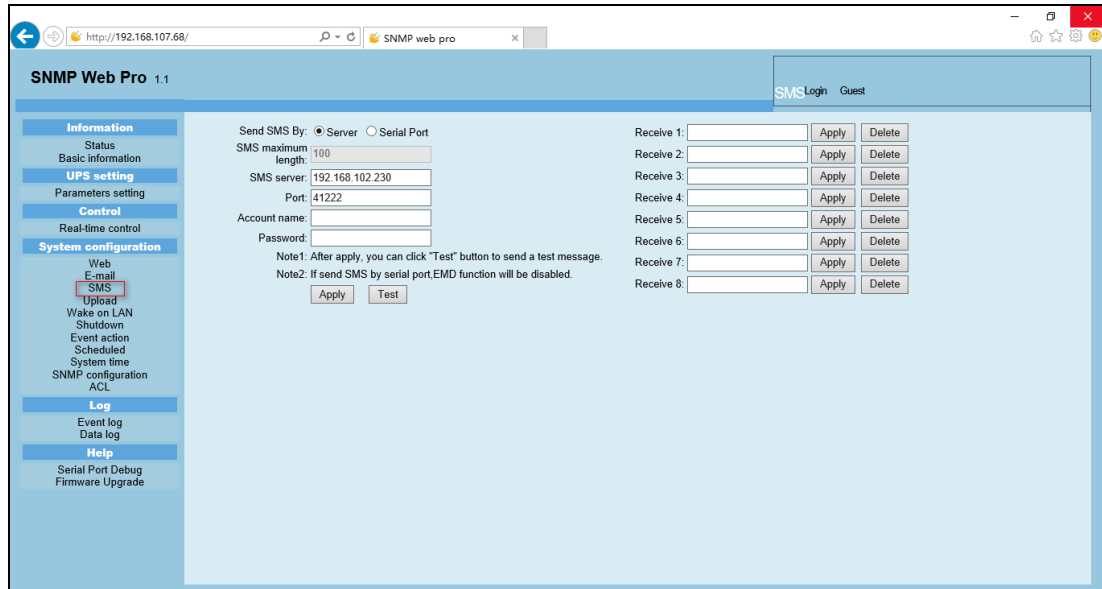


Chart 3-8 b

3.4.4. Wake on LAN

It's to remotely wake on specific PCs in LAN when these PCs are supported to Wake-on-LAN (WOL) via a magic packet.

Select System Configuration >> Wake on LAN. Refer to Chart 3-9.

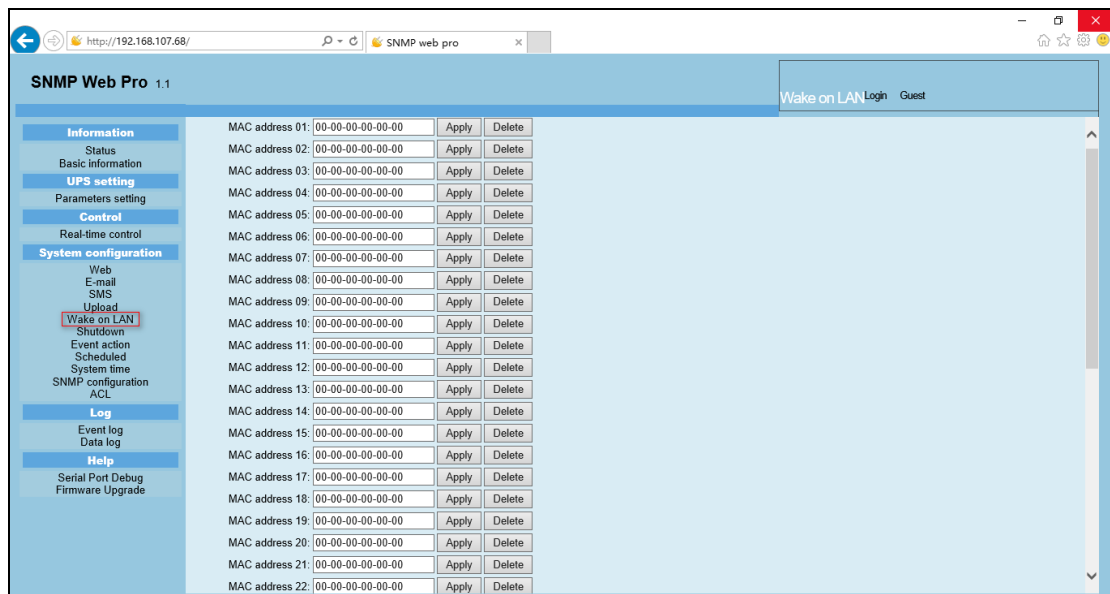


Chart 3-9

After MAC addresses of remote PCs are entered into address column, it will allow to remote control the PCs. However, it's also required to have hardware support for remote PCs to implement this function.

3.4.5. Shutdown

It is to remotely shut down specific PCs with Shutdown Wizard or SSH. If using Shutdown Wizard to shut down, please check user manual of

Shutdown Wizard for the details.

Select System Configuration >> Shutdown. Refer to Chart 3-10.

SNMP Web Pro 1.1

Shutdown Logout Administrator

Information

- Status
- Basic information
- UPS setting
- Parameters setting
- Control
- Real-time control
- System configuration
 - Web
 - E-mail
 - SMS
 - Upload
 - Wake on LAN
 - Shutdown
 - Event action
 - Scheduled
 - System time
 - SNMP configuration
 - ACL
- Log
 - Event log
 - Data log
- Help
 - Serial Port Debug
 - Firmware Upgrade

Your script list below:

01: install.sh

select No file selected

*You can enter script name in command field if you want to execute it by SSH.

*If you are using the ShutdownWizard 1.16 and above please check AES encryption.

	IP address	AES encryption	SSH shutdown	User name	Password	Command				
01:	0.0.0.0	<input type="checkbox"/>	<input type="checkbox"/>	root	*****	halt	Apply	Delete	Test	01
02:	0.0.0.0	<input type="checkbox"/>	<input type="checkbox"/>	root	*****	halt	Apply	Delete	Test	02
03:	0.0.0.0	<input type="checkbox"/>	<input type="checkbox"/>	root	*****	halt	Apply	Delete	Test	03
04:	0.0.0.0	<input type="checkbox"/>	<input type="checkbox"/>	root	*****	halt	Apply	Delete	Test	04
05:	0.0.0.0	<input type="checkbox"/>	<input type="checkbox"/>	root	*****	halt	Apply	Delete	Test	05
06:	0.0.0.0	<input type="checkbox"/>	<input type="checkbox"/>	root	*****	halt	Apply	Delete	Test	06
07:	0.0.0.0	<input type="checkbox"/>	<input type="checkbox"/>	root	*****	halt	Apply	Delete	Test	07
08:	0.0.0.0	<input type="checkbox"/>	<input type="checkbox"/>	root	*****	halt	Apply	Delete	Test	08
09:	0.0.0.0	<input type="checkbox"/>	<input type="checkbox"/>	root	*****	halt	Apply	Delete	Test	09
10:	0.0.0.0	<input type="checkbox"/>	<input type="checkbox"/>	root	*****	halt	Apply	Delete	Test	10
11:	0.0.0.0	<input type="checkbox"/>	<input type="checkbox"/>	root	*****	halt	Apply	Delete	Test	11
12:	0.0.0.0	<input type="checkbox"/>	<input type="checkbox"/>	root	*****	halt	Apply	Delete	Test	12
13:	0.0.0.0	<input type="checkbox"/>	<input type="checkbox"/>	root	*****	halt	Apply	Delete	Test	13

Chart 3-10

- AES encryption
If use the shutdown wizard to shut down the PC, need to check AES encryption, and do not need to configure other options.
- SSH shutdown
If use SSH to shut down the PC, need to check SSH shutdown, and configure user name, password and command. User name refers to the SSH account name, which is "root" by default; Password refers to the password of the SSH account, which is "Q1f@18*_~zYLyaM" by default; Command refers to the command to be executed, and the default is "halt".
- Test
The purpose of test is to check whether the environmental conditions for remote shutdown are well matched. When the conditions are ready, click test and the PC will shut down.

3.4.6. Event action

This function is only available to integrate with Shutdown Wizard. Please also check user manual of Shutdown Wizard for the details.

Select System Configuration >> Event action. Refer to Chart 3-11.

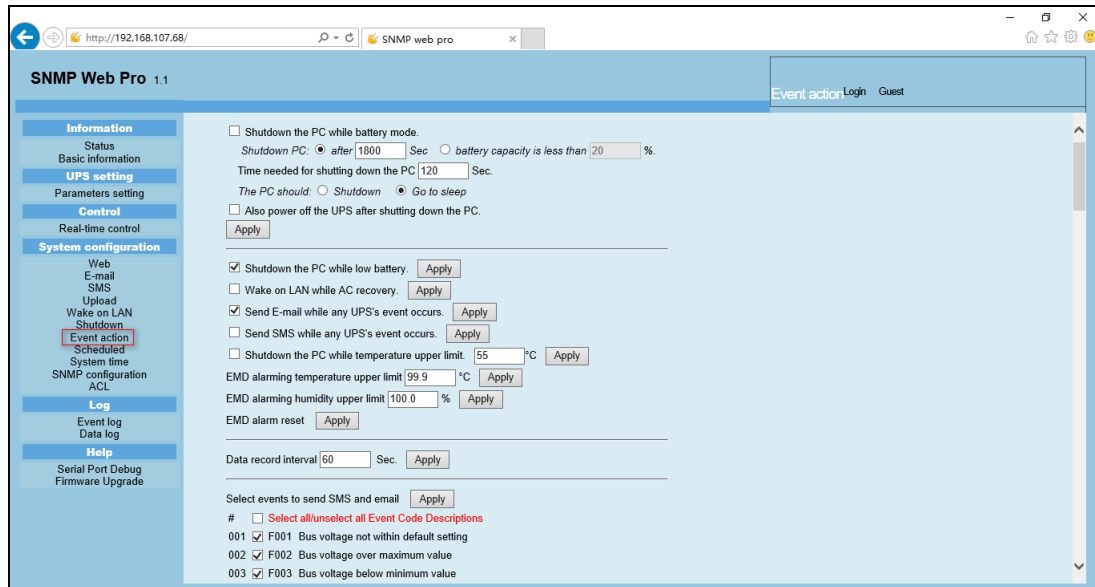


Chart 3-11

- Shutdown the PC while battery mode: When selected, integrated with Shutdown Wizard, local PC will shut down while UPS works on battery mode.
- Time needed for shutting down the PC: Enter the delay time to shut down the operating system.
- The PC should:
 1. Shutdown: When clicking the checkbox, the selected system will shut down. The default setting is clicked.
 2. Sleep mode: When clicking the checkbox, selected system will suspend the system instead of a normal shutdown. But this function is only supported by Windows 2000 or higher on supported hardware.
- Also power off the UPS after shutting down the PC: When click the checkbox, monitored UPS will turn off after local system shuts down. The UPS shutdown time will be later than system complete shutdown time. Users can choose to shut down the system without shutting down the UPS.
- Shutdown UPS output after xx sec: It will cut off UPS output after monitored UPS works on battery mode for xx sec.
- Shutdown the PC while low battery: When clicking this checkbox, local PC will shut down when monitored UPS battery is running low.
- Wake on LAN while AC recovery: When clicking this checkbox, the local PC will be wake on LAN while AC recovery.
- Send E-mail while any UPS event occurs: When clicking this checkbox, it will send alarm E-mail when any event occurs on the local UPS.
- Send SMS while any UPS event occurs: When clicking this checkbox, in the event of an alarm condition occurring, a message about UPS status will be sent to the specified users via mobile phone.

- EMD alarming temperature upper limit: Set up alarm for high temperature point. If detected temperature is beyond setting value, it will send alarm message.
- EMD alarming humidity upper limit: Set up alarm for high humidity point. If detected humidity is beyond setting value, it will send alarm message.
- Data record interval xx sec: Data log record the data per xx sec.

3.4.7. Scheduled

Select System Configuration >> Scheduled. Refer to Chart 3-12.

Chart 3-12

- Scheduled battery self-test: Scheduled battery self-test can be executed once, daily, weekly, or monthly. Users can select UPS and time parameters. It is recommended to set only one action in the same time. If multiple actions have been applied at the same time, some of these actions may be ignored. Any action will be ignored when the action is not supported by the UPS.
- Scheduled UPS on/off: Scheduled UPS on/off can be executed once, daily, weekly. Users can select UPS and time parameters. It is recommended to set only one action in the same time. If multiple actions have been applied at the same time, some of these actions may be ignored. Any action will be ignored when the action is not supported by the UPS.

3.4.8. System time

Select System Configuration >> System time. Refer to Chart 3-13.

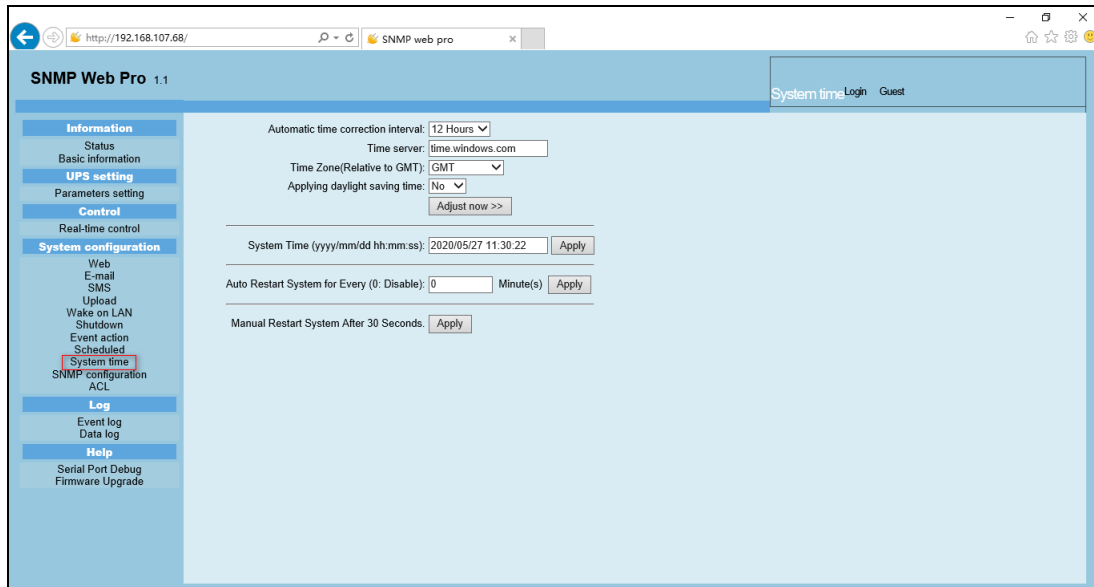


Chart 3-13

- Automatic time correction interval
- Time server: The SNTP server IP address or domain name.
- Time Zone (Relative to GMT): It's measured to relative to GMT.
- System Time (yyyy/mm/dd hh:mm:ss): It is to set up SNMP web local host time
- Auto Restart System for Every (0: Disable): XX Minute(s)
- Manual Restart system after 30 Seconds: When click "Apply" button, SNMP will restart after 30 seconds.

3.4.9. SNMP configuration

Setting SNMP web pro basic information such as IP address, password, trap IP address, SNMP UDP port, add/delete snmpv3 user account and restore the factory settings.

Note: Some modifications are required to restart SNMP server to become effective.

Select System Configuration >> SNMP configuration. Refer to Chart 3-14 a and 3-14 b.

SNMP Web Pro 1.1

SNMP configuration Login Guest

Information

Status

Basic information

UPS setting

Parameters setting

Control

Real-time control

System configuration

Web

E-mail

SMS

Upload

Wake on LAN

Shutdown

Event action

Scheduled

System time

SNMP configuration

ACL

Log

Event log

Data log

Help

Serial Port Debug

Firmware Upgrade

System will reboot when this item has been Applied.

SNMP Information

SNMP equipment attached: SNMP web pro (Less than 32 characters) Apply

Contact: syscontact Apply

Location: syslocation Apply

System name: SNMP-System Apply

Network settings

Automatically obtain IP address *
Use a static IP address

IP address: 192.168.107.68

Subnet mask: 255.255.255.0

Default gateway: 192.168.107.254 Apply

DNS: 192.168.100.238 Apply

IPv6 Network settings

IPv6 address: fe80::2220:5ff:fe25::fff

Prefix length: 64

Password

Old password: Apply

New password: Apply

Confirm password: Apply

SNMP trap configuration *

Trap time interval: 300 Sec. Apply

Trap community string: public Apply

Chart 3-14 a

SNMP Web Pro 1.1

SNMP configuration Login Guest

Information

Status

Basic information

UPS setting

Parameters setting

Control

Real-time control

System configuration

Web

E-mail

SMS

Upload

Wake on LAN

Shutdown

Event action

Scheduled

System time

SNMP configuration

ACL

Log

Event log

Data log

Help

Serial Port Debug

Firmware Upgrade

System will reboot when this item has been Applied.

SNMP server configuration *

Version: V1/V2 V3 Apply Please restart snmpserver

SNMP port: 161 Apply

Trap receive port: 162 Apply

SNMP community string: public Apply

RFC1628 table index base: 0 1 Apply

SNMP server control: Start Stop Restart

Remote login

Telnet: Enable Disable Apply

SSH: Enable Disable Apply

MODBUS TCP

MODBUS TCP Server: Enable Disable Apply

Server port: 502 Apply

Restore the factory settings *

Confirm restore factory settings? Restore

Reboot

Reboot the system: Apply

Chart 3-14 b

- IP address: There are two methods to obtain IP address
 1. Automatically obtain IP address (DHCP, default)
 2. Manually configure IP address

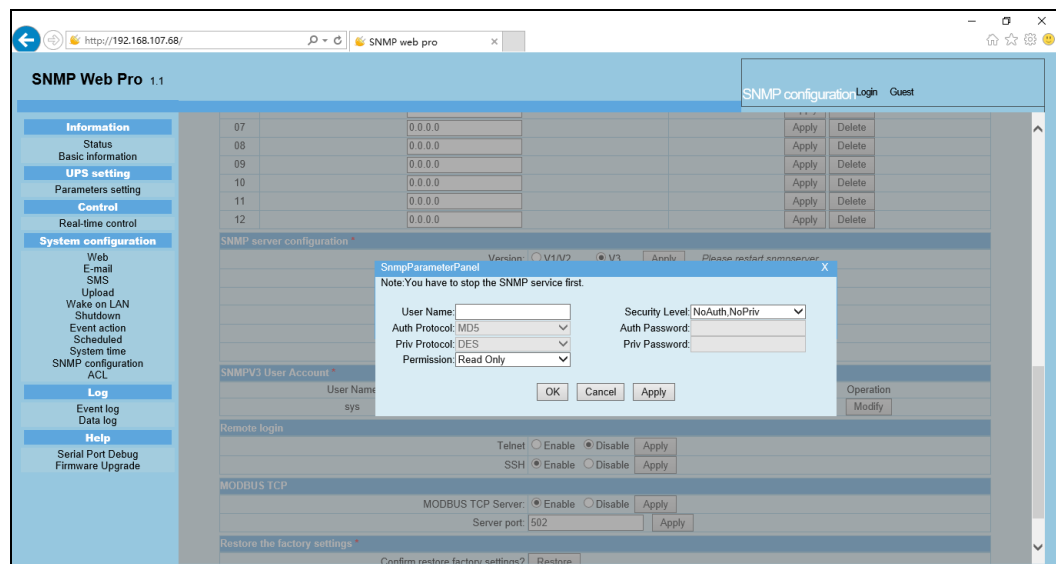
The system will default automatically obtain IP addresses. If there is no this kind of service provided in LAN, the default IP will display as "192.168.102.230", Net mask as "255.255.255.0" and default gateway as "192.168.102.254".
- Password: Modify the password. The length of password is 8~15 digits. Recommended to have a password policy with minimum 8 characters including a combination of uppercase, lowercase, numerical and special character and not to use dictionary words as password.

- Trap IP address: The SNMP device could provide 12 static trap addresses.
- SNMP server configuration:

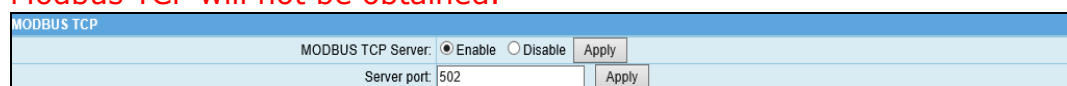
Version: the "V3" is recommended for the safety consideration.

You may change SNMP port and trap port.

You also can add SNMPV3 users by clicking "Add" button. It will pop up a screen to set up user setting such as security level and permission level. Refer to below chart.



- Remote login: You can log in to SNMP Web Pro remotely through Telnet or SSH. These two services are turned off by default for security reasons. Remote login using Telnet is not recommended. If you need to update the SNMP Web Pro firmware via SNMP Web Manager, you need to enable the SSH service. It is recommended to turn off this service after the upgrade is complete.
- Modbus TCP: Before using this function, you need to enable Modbus TCP Services and set the Modbus TCP port. The default setting is 502. If you disable it, the service will be not available and the data packets of Modbus TCP will not be obtained.



Once you've configured it, you can test it using Modbus Poll or ModScan software. The data acquisition for machine parameters is required to refer to modbus register address mapping protocol. Different machine models need to refer to the corresponding protocol.

- Restore the factory settings
Note: The system will default automatically obtain IP addresses and default Password is Q1f@18*_~zYLyaM

3.4.10. ACL

ACL is abbreviation of Access Control Lists. It's to protect internet security by identifying designated IP address to effectively control the user access for SNMP Web Pro.

Users can decide to choose which services to apply for ACL service by clicking boxes. None of the services are selected by default. Before clicking “Apply” button, it's necessary to enter IP address and select service type in “IP address allowed to access” column. Otherwise, any computer whose IP address is not entered and service not selected here will be blocked from firewall and not allowed to access SNMP Web Pro. Refer to Chart 3-15.

SNMP Web Pro 1.1

ACL Login Guest

Information

- Status
- Basic information
- UPS setting
- Parameters setting

Control

- Real-time control

System configuration

- Web
- E-mail
- SMS
- Upload
- Wake on LAN
- Shutdown
- Event action
- Scheduled
- System time
- SNMP configuration
- ACL**

Log

- Event log
- Data log

Help

- Serial Port Debug
- Firmware Upgrade

Services using ACL

	Http	Https	SSH	Telnet	SNMP
	<input checked="" type="checkbox"/>			<input checked="" type="checkbox"/>	<input checked="" type="checkbox"/>

* Please fill in the IP address before operation!

IP address allowed to access:

	IP Address	Http	Https	SSH	Telnet	SNMP
01:	192.168.104.60	<input checked="" type="checkbox"/>	<input checked="" type="checkbox"/>	<input checked="" type="checkbox"/>	<input checked="" type="checkbox"/>	<input checked="" type="checkbox"/>
02:		<input type="checkbox"/>	<input type="checkbox"/>	<input type="checkbox"/>	<input type="checkbox"/>	<input type="checkbox"/>
03:		<input type="checkbox"/>	<input type="checkbox"/>	<input type="checkbox"/>	<input type="checkbox"/>	<input type="checkbox"/>
04:		<input type="checkbox"/>	<input type="checkbox"/>	<input type="checkbox"/>	<input type="checkbox"/>	<input type="checkbox"/>
05:		<input type="checkbox"/>	<input type="checkbox"/>	<input type="checkbox"/>	<input type="checkbox"/>	<input type="checkbox"/>
06:		<input type="checkbox"/>	<input type="checkbox"/>	<input type="checkbox"/>	<input type="checkbox"/>	<input type="checkbox"/>
07:		<input type="checkbox"/>	<input type="checkbox"/>	<input type="checkbox"/>	<input type="checkbox"/>	<input type="checkbox"/>
08:		<input type="checkbox"/>	<input type="checkbox"/>	<input type="checkbox"/>	<input type="checkbox"/>	<input type="checkbox"/>
09:		<input type="checkbox"/>	<input type="checkbox"/>	<input type="checkbox"/>	<input type="checkbox"/>	<input type="checkbox"/>
10:		<input type="checkbox"/>	<input type="checkbox"/>	<input type="checkbox"/>	<input type="checkbox"/>	<input type="checkbox"/>
11:		<input type="checkbox"/>	<input type="checkbox"/>	<input type="checkbox"/>	<input type="checkbox"/>	<input type="checkbox"/>
12:		<input type="checkbox"/>	<input type="checkbox"/>	<input type="checkbox"/>	<input type="checkbox"/>	<input type="checkbox"/>
13:		<input type="checkbox"/>	<input type="checkbox"/>	<input type="checkbox"/>	<input type="checkbox"/>	<input type="checkbox"/>
14:		<input type="checkbox"/>	<input type="checkbox"/>	<input type="checkbox"/>	<input type="checkbox"/>	<input type="checkbox"/>
15:		<input type="checkbox"/>	<input type="checkbox"/>	<input type="checkbox"/>	<input type="checkbox"/>	<input type="checkbox"/>

Apply

Chart 3-15

3.5. Log

3.5.1. Event log

In the Event Log page, it lists all history events and can be saved as .csv file. The event log includes UPS warnings, fault info, EMD warnings, UPS operation logs from web users or ViewPower pro users. All logs are recorded in flash memory of web card by month. It's safely recorded without loss even after power failure occurs. It can save up to over 200,000 threads. Refer to Chart 3-15.

Select Log >> Event log.

SNMP Web Pro 1.1

Event log Login Guest

2020_05 csv Apply Delete

Time	Event name	Event source	Client IP
2020/05/26 18:44:36	Battery disconnected	MCU Polling	---
2020/05/26 18:44:36	Neutral not connected	MCU Polling	---
2020/05/26 18:44:36	Input site fault	MCU Polling	---
2020/05/26 18:44:36	Phase sequence incorrect	MCU Polling	---
2020/05/26 18:44:36	Phase sequence incorrect in bypass	MCU Polling	---
2020/05/26 18:44:36	Input frequency unstable in bypass	MCU Polling	---
2020/05/26 18:44:40	Line Mode	MCU Polling	---
2020/05/26 18:44:43	AC failure	MCU Polling	---
2020/05/26 18:45:20	Send Email failed!	Email	---
2020/05/26 18:45:41	Send Email failed!	Email	---
2020/05/26 18:46:03	Send Email failed!	Email	---
2020/05/26 18:47:24	Connect to time server error	SNTP	---
2020/05/26 18:47:36	Battery disconnected	MCU Polling	---
2020/05/26 18:47:36	Neutral not connected	MCU Polling	---
2020/05/26 18:47:36	Input site fault	MCU Polling	---
2020/05/26 18:47:36	Phase sequence incorrect	MCU Polling	---
2020/05/26 18:47:36	Phase sequence incorrect in bypass	MCU Polling	---
2020/05/26 18:47:36	Input frequency unstable in bypass	MCU Polling	---
2020/05/26 18:47:37	Line Mode	MCU Polling	---
2020/05/26 18:47:38	AC failure	MCU Polling	---
2020/05/26 18:48:20	Send Email failed!	Email	---
2020/05/26 18:48:41	Send Email failed!	Email	---
2020/05/26 18:49:02	Send Email failed!	Email	---
2020/05/26 18:49:24	Send Email failed!	Email	---
2020/05/26 18:49:45	Send Email failed!	Email	---

Chart 3-15

3.5.2. Data Log

In the Data Log page, it will list all history logs and can be save as .csv file. All logs are recorded in flash memory of web card by day. It's safely recorded without loss even after power failure occurs. It can save up to over 200,000 threads. Refer to Chart 3-16.

Select Log >> Data log.

SNMP Web Pro 1.1

Data log Login Guest

2020_05_27 csv Apply Delete

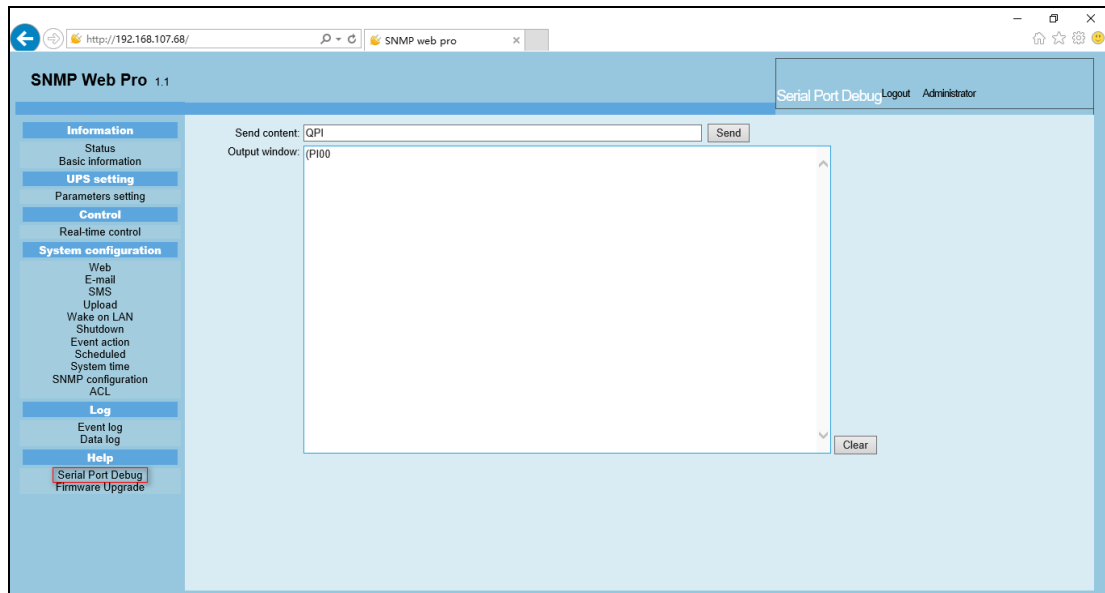
Time	Input voltage(V)	Output voltage(V)	Output frequency(Hz)	Load(%)	Battery voltage(V)	Temp.(°C)	EMD Temp.(°C)	EMD humidity(%)
2020/05/27 10:07:30	216.9	0.0	0.0	0	27.4	23.3	---	---
2020/05/27 10:08:30	216.4	0.0	0.0	0	27.3	23.1	---	---
2020/05/27 10:09:30	218.7	0.0	0.0	0	27.4	23.1	---	---
2020/05/27 10:10:30	218.9	0.0	0.0	0	27.4	23.3	---	---
2020/05/27 10:11:30	219.2	0.0	0.0	0	27.3	23.1	---	---
2020/05/27 10:12:30	218.6	0.0	0.0	0	27.3	23.1	---	---
2020/05/27 10:13:30	219.1	0.0	0.0	0	27.4	23.1	---	---
2020/05/27 10:14:30	219.1	0.0	0.0	0	27.3	23.1	---	---
2020/05/27 10:15:31	217.7	0.0	0.0	0	27.4	23.1	---	---
2020/05/27 10:16:31	215.5	0.0	0.0	0	27.3	23.1	---	---
2020/05/27 10:17:31	216.3	0.0	0.0	0	27.4	23.1	---	---
2020/05/27 10:18:31	215.7	0.0	0.0	0	27.4	23.1	---	---
2020/05/27 10:19:31	217.9	0.0	0.0	0	27.3	23.1	---	---
2020/05/27 10:20:32	218.0	0.0	0.0	0	27.3	23.1	---	---
2020/05/27 10:21:32	217.3	0.0	0.0	0	27.3	23.1	---	---
2020/05/27 10:22:32	215.3	0.0	0.0	0	27.4	23.1	---	---
2020/05/27 10:23:32	216.2	0.0	0.0	0	27.3	23.1	---	---
2020/05/27 10:24:33	215.4	0.0	0.0	0	27.3	23.1	---	---
2020/05/27 10:25:33	218.5	0.0	0.0	0	27.3	23.1	---	---
2020/05/27 10:26:33	219.0	0.0	0.0	0	27.3	23.1	---	---
2020/05/27 10:27:33	216.8	0.0	0.0	0	27.3	23.1	---	---
2020/05/27 10:28:33	218.4	0.0	0.0	0	27.3	23.1	---	---
2020/05/27 10:29:34	217.7	0.0	0.0	0	27.4	23.1	---	---
2020/05/27 10:30:34	218.9	0.0	0.0	0	27.3	22.9	---	---
2020/05/27 10:31:34	218.1	0.0	0.0	0	27.4	22.9	---	---

Chart 3-16

3.6. Help

3.6.1. Serial Port Debug

It's to test communication condition between SNMP card and device.
Select Help >> Serial Port Debug . Refer to Chart 3-17.



3.6.2. Firmware Upgrade

It is recommended to enable the SSH before the update, refer to 3.4.9.
Select Help >> Firmware Upgrade . Refer to Chart 3-18.

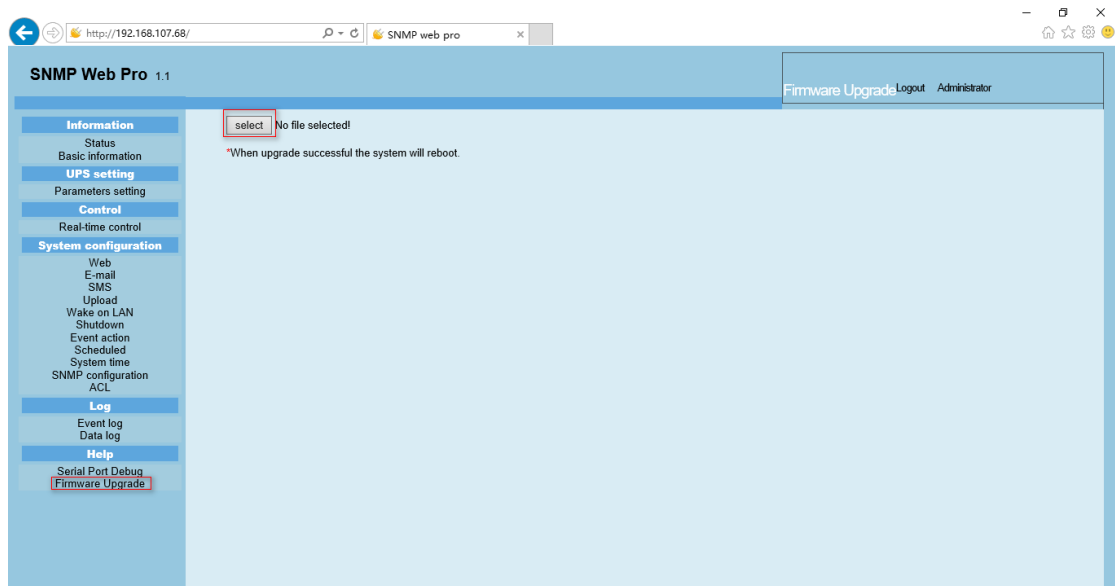


Chart 3-18

Disable the SSH after the update.

4. Service list

Service	Purpose	Default configuration	Port	Port modification	UDP/TCP	Direction
Information	For management software (such as SNMP Web Manager) to obtain information about SNMP Web Pro, such as IP, MAC, gateway, DNS, etc.	Enabled	51220	Disabled	UDP	In
HTTP	Obtain the related information and set the parameters of the monitored device through the HTTP protocol.	Disabled	80	Enabled	TCP	In
HTTPS	Obtain the related information and set the parameters of the monitored device through the HTTPS protocol.	Enabled	443	Enabled	TCP	In
Telnet	Remote login system.	Disabled	23	Disabled	TCP	In
SSH	Use SNMP Web Manager for firmware upgrade, modify network parameters, etc.	Disabled	22	Disabled	TCP	In
SNMP	Obtain the related information and set the parameters of the monitored device through the SNMP protocol.	Enabled	161	Enabled	UDP	In
SNMP trap	Send SNMP traps when events occur on the monitored device.	Enabled	162	Enabled	UDP	Out
Easy shutdown	Shut down the host of the specified IP. Use with the ShutdownWizard.	Disabled	31234	Disabled	UDP	Out
Encrypted Shutdown	Shut down the host of the specified IP. Use with the ShutdownWizard.	Disabled	41234	Disabled	TCP	Out
SMS	Send SMS when events occur on the monitored device. Usually used with	Disabled	41222	Enabled	UDP	Out

	SNMP Web Manager.					
SNTP	Get time from the time server.	Enabled	123	Disabled	UDP	Out
Email	Send emails when events occur on the monitored device.	Disabled	465	Enabled	TCP	Out
MODBUS TCP	Obtain the related information and set the parameters of the monitored device through the MODBUS TCP protocol.	Enabled	512	Enabled	TCP	In

Cyber Security Legal Disclaimer

This product is designed to be connected to and to communicate information and data via a network interface. It is your sole responsibility to provide and continuously ensure a secure connection between product and your network or any other network (as the case may be). You establish and maintain any appropriate measures (such as but not limited to the installation firewalls, application of authentication measures, encryption of data, installation of anti-virus programs etc.) to protect the product, the network, its system and the interface against any kind of security breaches, unauthorized access, interference, intrusion, leakage and/or theft of data or information ABB Ltd and its affiliates are not liable for damages and/or losses related to such security breaches any unauthorized access, interference, intrusion, leakage and/or theft of data or information.