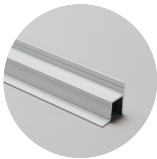


PROFILE HIDDEN

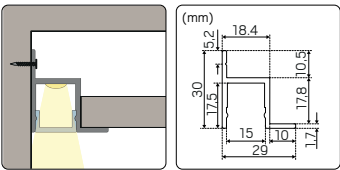
Our profile for ceiling-to-wall mounting creates a decorative grazing light along the wall surface and is available in white, black, and aluminium. An opal cover lid provides a softer, more even light without visible diodes – perfect for applications like wall lighting. A clear cover lid gives a more direct light with higher output, ideal for functional lighting in shelves or workspaces. This solution offers both aesthetics and functionality, making it an excellent choice for creating ambience.

- Now available in white, black and aluminium



PROFILE HIDDEN

GTIN	Type	Dimensions (LxWxH) mm
7392971125473	Profile Hidden Alu 2m	2000x29x30
7392971152929	Profile Hidden White 2m	2000x29x30 NEW
7392971152936	Profile Hidden Black 2m	2000x29x30 NEW



PROFILE HIDDEN COVER

GTIN	Type	Dimensions (LxWxH) mm
7392971121413	Cover Opal 15mm 2m 500kg	2000x15x8
7392971150666	Cover Opal 15mm 2m	2000x15x8
7392971127668	Cover High Opal 15mm 2m	2000x19x18
7392971153650	Cover Clear 15mm 2m	2000x15x8

