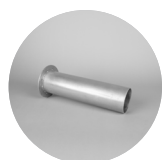


INSERTS

Inserts for mounting bollards. The inserts have horizontal stainless adjustment screws, M16 with 8mm socket head for easy adjustment, fastening and correction of the post. The base foundation is suitable for installation in 108 base, while the ground anchor is intended for burying or casting. The 365mm foundation insert fits an insertion depth of 35mm, while the 490mm foundation insert is compatible with an insertion depth of 480mm.

- Inserts for mounting bollards
- The Ground Ancor 400mm is intended for burying or casting
- The Foundation Insert 365mm fits an insertion depth of 365mm
- The Foundation Insert 490mm fits an insertion depth of 480mm



INSERTS

GTIN	Type	Colour
7392971147451	Ground Ancor 400mm	Galvanised
7392971155869	Foundation Insert 365mm	Galvanised
7392971155876	Foundation Insert 490mm	Galvanised

