

Produktdatablad

Spesifikasjoner



Trykknapphode flush i metall med fjærretur og plan trykflate i sort farge med hvit "ARRET"

El-nummer:
4305748

ZB4FA233

EAN: 3606489580902

Produktdata

Produktspekter	Harmony XB4
Produkt eller type komponent	Hode for trykknapper uten lys
Kortnavn på utstyr	ZB4F
Innfatningsmateriale	Forkrommet metall
Montasjediameter	30,5 mm
Salg per udelelig kvantitet	1
Hode type	Built-in-flush
Formen på varslingsenhetens hode	Rund
Type arm/stempel	fjærretur
operatørprofil	Sort innfelt, STOPP (Hvit)
Hette eller deksselfarge	Sort

Teknisk data

Bredde	36,6 mm
Høyde	36,6 mm
Dybde	31 mm
Mekanisk levetid	10000000 sykluser
elektrisk sammensetningskode	C1 for <9 kontakter bruker Enkel blokker i frontmontering C2 for <9 kontakter bruker enkel og dobbel blokker i frontmontering C11 for <3 kontakter bruker Enkel blokker i frontmontering C15 for <1 kontakter bruker Enkel blokker i frontmontering
Enhetens utseende	Basic element

Miljø

Overflatebeskyttelse	TH
Omgivelsestemperatur for lagring	-40...70 °C
Omgivelsestemperatur drift	-40...70 °C
Overspenningskategori	Klasse I conforming to IEC 60536
IP-grad	IP66 i samsvar med IEC 60529 IP67 i samsvar med IEC 60529 IP69 i samsvar med IEC 60529 IP69K i samsvar med ISO 20653 Type 13 i samsvar med UL 50E Type 12 i samsvar med UL 50E Type 4 i samsvar med UL 50E Type 4X i samsvar med UL 50E

Ik beskyttelsesklasse	IK06 i samsvar med IEC 50102
Standarder	CSA C22.2 No 14 IEC 60947-5-1 IEC 60947-5-4 UL 508 IEC 60947-1 JIS C8201-5-1 CE JIS C8201-1
Produktsertifikater	UL listet CSA CCC EAC
Vibrasjonsmotstand	5 gn (f= 10...500 Hz) conforming to IEC 60068-2-6 25 mm peak to peak (f= 2...10 Hz) conforming to IEC 60068-2-6
støtmotstand	30 gn (varighet = 18 ms) for halvsinusurve akselerasjon i samsvar med IEC 60068-2-27 50 gn (varighet = 11 ms) for halvsinusurve akselerasjon i samsvar med IEC 60068-2-27 25 gn (varighet = 6 ms) for 1000 sjokk på hver akse i samsvar med IEC 60068-2-27

Forpakkingsinformasjon

Enhetsstype pakke 1	PCE
Antall enheter i pakke 1	1
Pakke 1 Høyde	4,3 cm
Pakke 1 Bredde	5,2 cm
Pakke 1 Vekt	5,5 cm
Package 1 Weight	58,0 g

Garantiperiode

Garanti	18 months
----------------	-----------

Environmental Data

Schneider Electric tar sikte på å oppnå Net Zero-status innen 2050 gjennom partnerskap med leverandørkjeden, materialer med lavere slagkraft og sirkularitet via vår pågående "Use Better, Use Longer, Use Again"-kampanje for å forlenge produktlevetiden og resirkulerbarheten.

[Environmental Data forklart >](#)

[Hvordan vi vurderer produktets bærekraft >](#)

Miljøfotavtrykk

Samlet klimagassutslipp gjennom livsløpet 1

PEP (Product Environmental Profile) [Produktmiljøprofil](#)

Use Better

Materialer og emballasje

Emballasje med resirkulert papp Nei

Emballasje uten plast Nei

[EU RoHS-direktiv](#)

Proaktivt i samsvar (Produktet inngår ikke i EUs RoHS direktivet)

Use Again

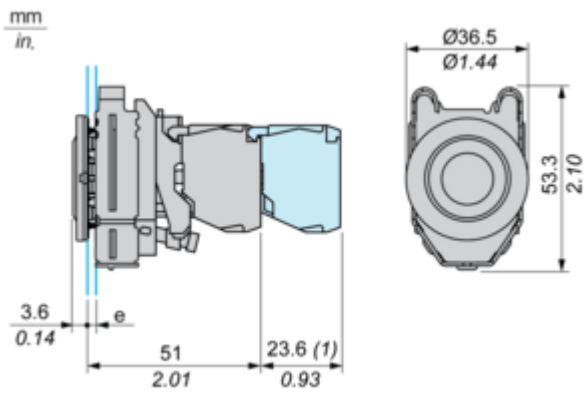
Ompakking og reproduksjon

Produktets livssyklus [Informasjon om levetidsslutt](#)

Tilbaketakning No

Dimensions Drawings

Dimensions



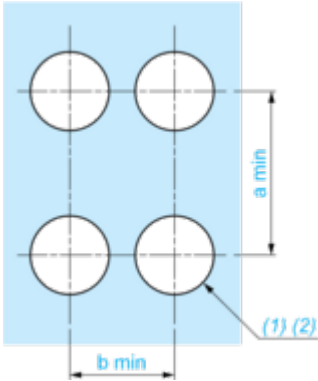
e : clamping thickness: 1 to 6 mm / 0.04 to 0.24 in.

(1) : Additional row of contacts

Mounting and Clearance

Panel Cut-out for Pushbuttons, Switches and Pilot Lights (Finished Holes, Ready for Installation)

Connection by Screw Clamp Terminals or Plug-in Connectors



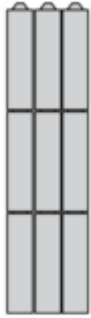
(1) : Diameter on finished panel or support

(2) : $\varnothing 30.75$ mm recommended ($\varnothing 30.5_0^{+0.5}$) / $\varnothing 1.21$ in. recommended ($\varnothing 1.20$ in. $_0^{+0.0196}$)

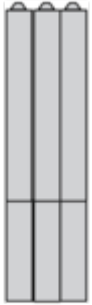
Connections	a in mm	a in in.	b in mm	b in in.
By connectors	50	1.97	40	1.57
By connectors and with legend holder ZBZF32	50	1.97	40	1.57
By connectors and with legend holder ZBZF33	60	2.36	40	1.57

Technical Description

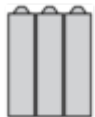
Electrical Composition Corresponding to Code C1



Electrical Composition Corresponding to Code C2



Electrical Composition Corresponding to Codes C9, C11, SF1 and SR1

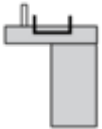


Electrical Composition Corresponding to Code C15

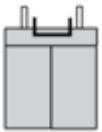
1 N/O



1 N/C



1 N/O + N/C or 1 N/O + N/O or 1 N/C + N/C



Legend

Single contact



Double contact



Light block

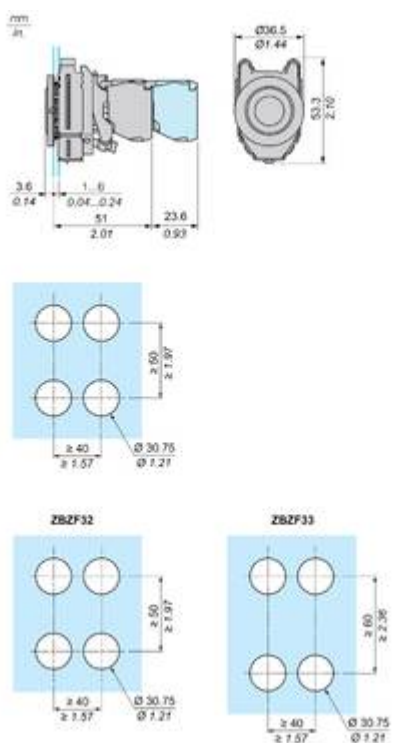


Possible location



Technical Illustration

Dimensions



Offer Marketing Illustration

Product benefits / Features

Features
Harmony XB4/XB5
Flush mounting solution

Innovative and attractive design
improving the look and feel of control panels and machines

Quick and easy installation
into a standard 30mm hole

Easier to clean with towels
than standard offers

Robustness to withstand harsh environments

Available for pushbuttons, illuminated pushbuttons, pilot lights and selector switches

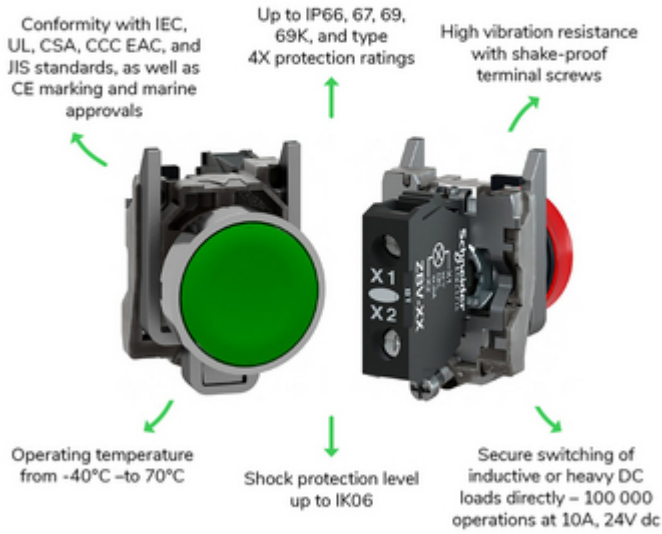
The infographic features a central image of three electrical components: a red pushbutton, a green illuminated pushbutton, and a black selector switch. Each feature is accompanied by a circular icon: a leaf for design, a wrench and hammer for installation, a hand cleaning for ease of cleaning, a lightning bolt for robustness, and a hand pointing to a component for application range.

Offer Marketing Illustration

Product benefits / Features

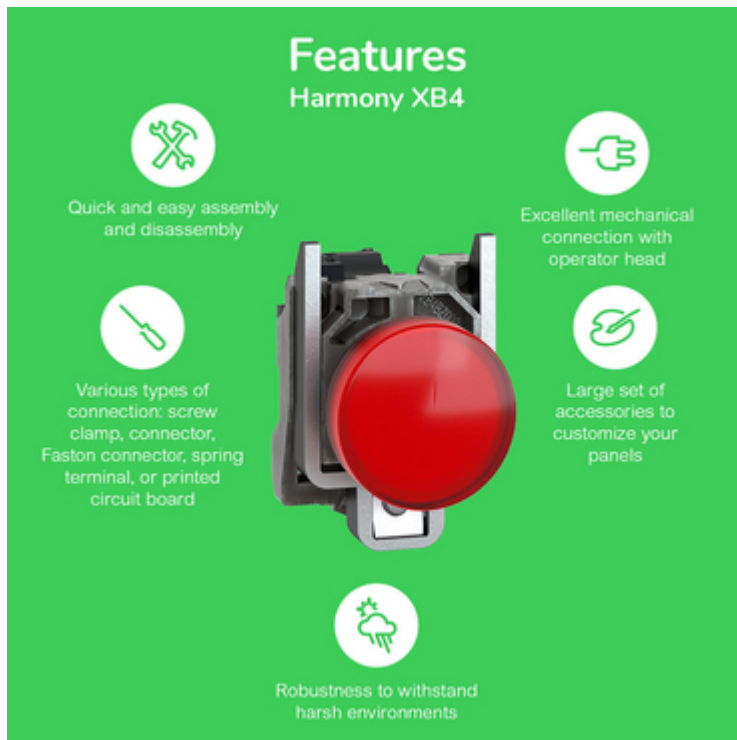
Technical Benefits

Harmony XB4



Offer Marketing Illustration

Product benefits / Features



The infographic features a central image of a red Schneider XB4 circuit breaker. It is surrounded by five circular icons, each with a corresponding text description of a feature. The background is a solid green color.

Features Harmony XB4






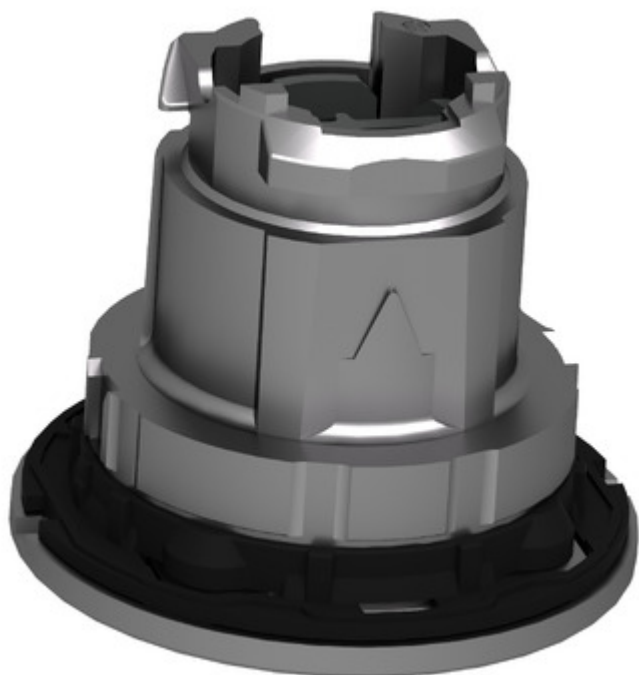
-  Quick and easy assembly and disassembly
-  Various types of connection: screw clamp, connector, Faston connector, spring terminal, or printed circuit board
-  Excellent mechanical connection with operator head
-  Large set of accessories to customize your panels
-  Robustness to withstand harsh environments

Image of product / Alternate images

Alternative



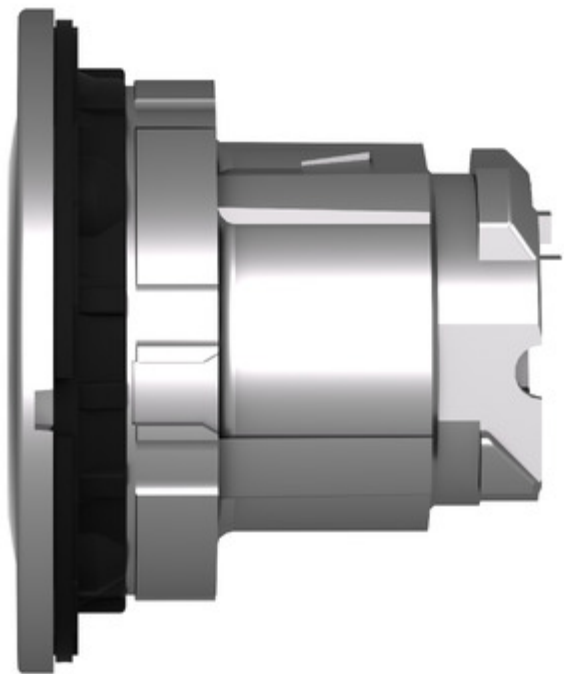




Image of product in real life situation

