

## IR universal remote control

Operating instructions



Art. no. MEG5761-0000

## For your safety



### CAUTION

Risk of damage to property and personal injury due to uncontrolled operation.

Only use the remote control to operate devices that are within view.

## Getting to know the remote control

The 10-channel IR universal remote control (hereafter referred to as remote control) is used to control devices with an IR receiver.

The infrared communication between remote control and IR receiver takes place via telegrams. A red LED lights up during transmission.

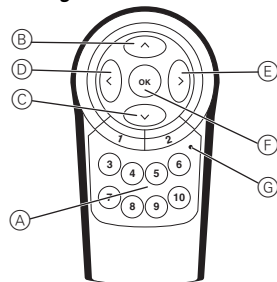
The maximum range is 12 m. The range is reduced by reflection on walls and ceilings or by bright light.

## Displays and operating elements



The coding for push-buttons 1-10 corresponds to the IR remote control Distance 2010.

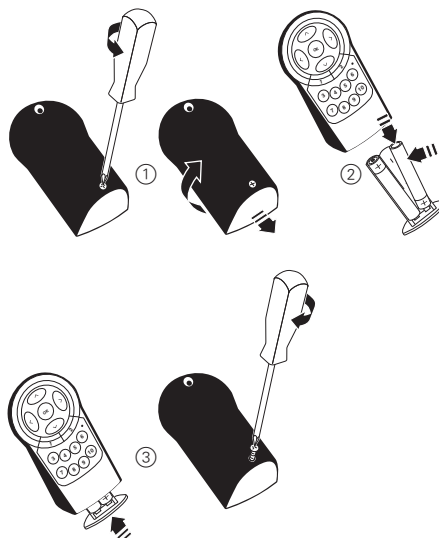
### Coding:



- A Operating field: Push-buttons 1-10
- B "Up arrow" push-button: corresponds to function of push-button 1
- C "Down arrow" push-button: corresponds to function of push-button 2
- D "Left arrow" push-button: corresponds to function of push-button 9
- E "Right arrow" push-button: corresponds to function of push-button 8
- F "OK" push-button: corresponds to push-button 10
- G Red LED: lights up during transmission. The battery's power has run out when the LED only lights up briefly or no longer lights up.

## Put the remote control into operation

### Inserting/replacing batteries



- ① Screw open the back cover.
- ② Place batteries into the battery compartment with correct polarity.
- ③ Insert the battery compartment and screw the cover on.

### Assigning push-button functions

- ① Specify the channel number of the receiver (channels are assigned at the receiver).
- ② Check function.

## Reprogramming from new to old telegram structure

To reprogram the remote control to the previous telegram structure of HWS 4 or HWS 8, carry out the following step:

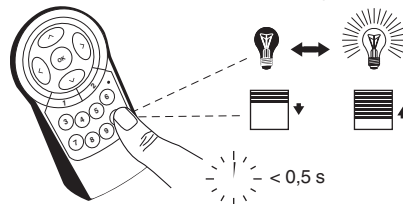
- ① Press push-buttons 6 and 10 at the same time for at least 3 seconds.

As soon as reprogramming is complete, the control LED lights up briefly two times. Carry out the same step to reprogram from old to new.

## Using the remote control

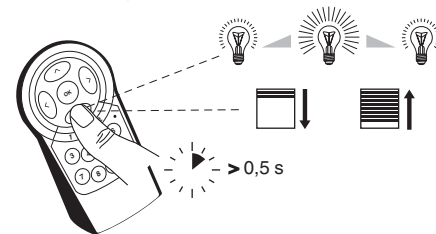
### Example applications:

#### Activate receiver, move blind step by step



- ① Press push-button briefly (< 0.5 s).  
The respective receiver is activated or the blind is moved up/down step by step.

### Modulate brightness, start blind movement



- ① Press and hold push-button (> 0.5 s).  
The brightness is modulated or the blind is moved up/down.
  - Hold the push-button down until the required level of brightness has been reached.
  - Press the push-button again in order to stop the blind.

## Technical data

Number of channels:	10
Operating principle:	Infrared communication with IR receiver via telegrams. Coding compatible with the IR receivers.
Display:	1 red LED
Range:	Max. 12 m
Battery:	2 triple A batteries Type: IEC LR 0.3 AAA (not included in delivery)



Dispose of the device separately from household waste at an official collection point. Professional recycling protects people and the environment against potential negative effects.

## Merten GmbH

Fritz-Kotz-Str. 8  
51674 Wiehl - Germany  
[se.com/contact](http://se.com/contact)

**Schneider**  
Electric