

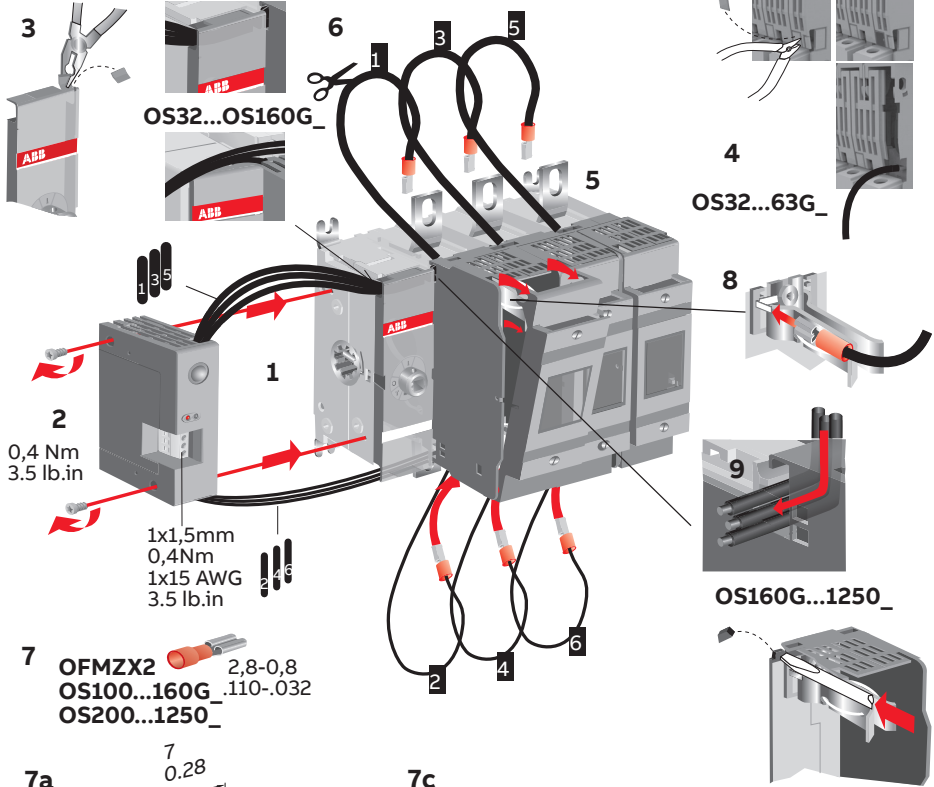
INSTALLATION INSTRUCTION

Electronic fuse monitor OFS_



OS32...160G, OS200...1250_ + OFS

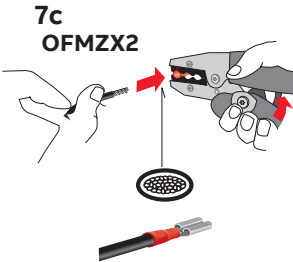
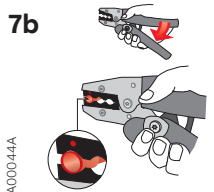
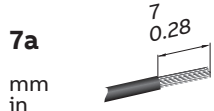
OS200...1250_ OS200...1250_



2
0,4 Nm
3.5 lb.in

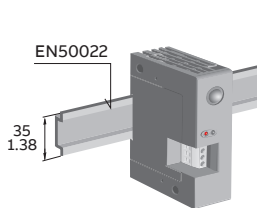
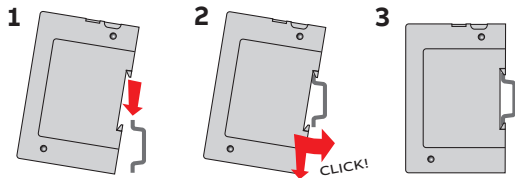
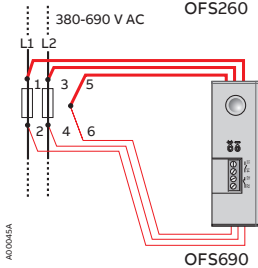
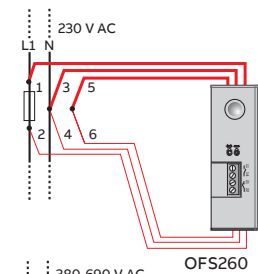
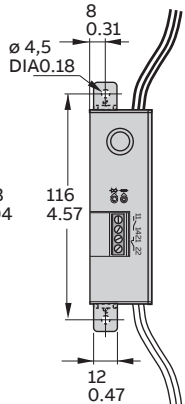
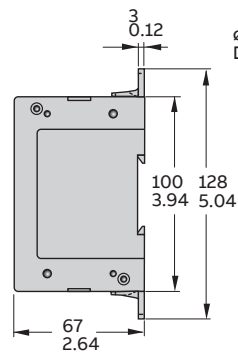
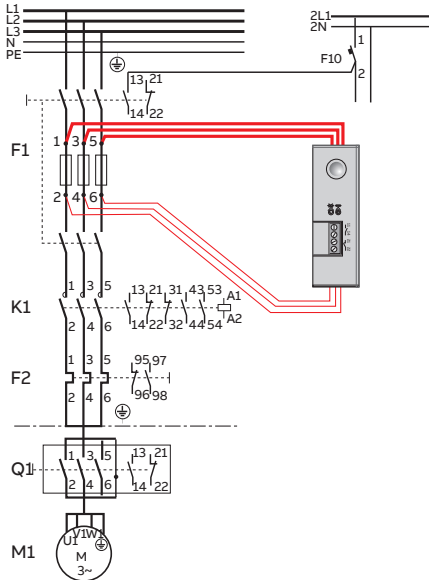
1x1,5mm
0,4Nm
1x15 AWG
3.5 lb.in

7 OFMZX2 2,8-0,8
OS100...160G .110-.032
OS200...1250_

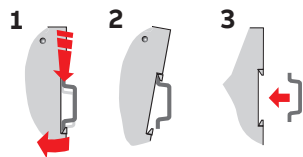


A00044A

OFS_



Remove



Functionality of the fuse monitor

		Green LED	Red LED	N.O	N.C
Switch fuse closed	Fuse OK	On	Off	Open	Closed
	Fuse blown	Off	On	Closed	Open
Switch fuse open	Fuse Ok	Off	Off	Open	Closed
	Fuse blown	Off	Off	Open	Closed

Contact us

ABB Oy

Muottitie 2A 65320

Vaasa, Finland

abb.com/lowvoltage