

REV. COMB. FOR 3RA27, AC3, 15KW/400V, DC24V 3-POLE, SZ  
S0 SPRING-LOADED TERMINAL ELECTR. AND MECH.  
INTERLOCK 2NO INTEGR., W. VOLTAGE TAP-OFF



Product brand name	SIRIUS
Product designation	Reversing contactor assembly
Product type designation	3RA23
Manufacturer's article number	<ul style="list-style-type: none"> <li>• 1 of the supplied contactor <a href="#">3RT2027-2BB40-0CC0</a></li> <li>• 2 of the supplied contactor <a href="#">3RT2027-2BB40</a></li> <li>• of the supplied RS assembly kit <a href="#">3RA2923-2AA2</a></li> <li>• of the supplied function module for communication <a href="#">3RA2711-2BA00</a></li> </ul>

General technical data	
Size of contactor	S0
Product extension	Yes
<ul style="list-style-type: none"> <li>• Auxiliary switch</li> </ul>	
Insulation voltage	690 V
<ul style="list-style-type: none"> <li>• with degree of pollution 3 rated value</li> </ul>	
Degree of pollution	3
Surge voltage resistance rated value	6 kV
Protection class IP	IP20
<ul style="list-style-type: none"> <li>• on the front</li> </ul>	

<b>Shock resistance at rectangular impulse</b>	
• at AC	8,3g / 5 ms, 5,3g / 10 ms
• at DC	10g / 5 ms, 7,5g / 10 ms
<b>Shock resistance with sine pulse</b>	
• at AC	13,5g / 5 ms, 8,3g / 10 ms
• at DC	15g / 5 ms, 10g / 10 ms
<b>Mechanical service life (switching cycles)</b>	
• of contactor typical	10 000 000
• of the contactor with added auxiliary switch block typical	10 000 000
<b>Equipment marking</b>	
• acc. to DIN EN 81346-2	Q

#### Ambient conditions

<b>Ambient temperature</b>	
• during operation	-25 ... +60 °C
• during storage	-55 ... +80 °C

#### Main circuit

<b>Number of poles for main current circuit</b>	3
<b>Number of NO contacts for main contacts</b>	3
<b>Number of NC contacts for main contacts</b>	0
<b>Operating voltage</b>	
• at AC-3 rated value maximum	690 V
<b>Operating current</b>	
• at AC-1 at 400 V	
— at ambient temperature 40 °C rated value	50 A
— at ambient temperature 60 °C rated value	45 A
• at AC-2 at 400 V rated value	32 A
• at AC-3	
— at 400 V rated value	32 A
<b>Operating current</b>	
• at 1 current path at DC-1	
— at 24 V rated value	35 A
— at 110 V rated value	4.5 A
• with 2 current paths in series at DC-1	
— at 24 V rated value	35 A
— at 110 V rated value	35 A
• with 3 current paths in series at DC-1	
— at 24 V rated value	35 A
— at 110 V rated value	35 A
<b>Operating current</b>	
• at 1 current path at DC-3 at DC-5	

— at 24 V rated value	20 A
— at 110 V rated value	2.5 A
• with 2 current paths in series at DC-3 at DC-5	
— at 24 V rated value	35 A
— at 110 V rated value	15 A
• with 3 current paths in series at DC-3 at DC-5	
— at 24 V rated value	35 A
— at 110 V rated value	35 A
<b>No-load switching frequency</b>	1 500 1/h
<b>Operating frequency</b>	
• at AC-1 maximum	1 000 1/h
• at AC-2 maximum	1 000 1/h
• at AC-3 maximum	1 000 1/h
• at AC-4 maximum	300 1/h

#### Control circuit/ Control

<b>Type of voltage of the control supply voltage</b>	DC
<b>Control supply voltage 1</b>	
• at DC rated value	24 V
<b>Design of the surge suppressor</b>	with varistor
<b>Closing power of magnet coil at DC</b>	5.9 W
<b>Holding power of magnet coil at DC</b>	5.9 W

#### Auxiliary circuit

<b>Number of NO contacts</b>	
• for auxiliary contacts	
— per direction of rotation	1
— instantaneous contact	2
<b>Operating current of auxiliary contacts at AC-12 maximum</b>	10 A
<b>Operating current of auxiliary contacts at AC-15</b>	
• at 230 V	6 A
• at 400 V	3 A
<b>Operating current of auxiliary contacts at DC-13</b>	
• at 24 V	10 A
• at 60 V	2 A
• at 110 V	1 A
• at 220 V	0.3 A
<b>Contact reliability of auxiliary contacts</b>	< 1 error per 100 million operating cycles

#### UL/CSA ratings

<b>Full-load current (FLA) for three-phase AC motor</b>	
• at 480 V rated value	27 A
• at 600 V rated value	27 A

<b>Yielded mechanical performance [hp]</b>	
<ul style="list-style-type: none"> <li>• for single-phase AC motor <ul style="list-style-type: none"> <li>— at 110/120 V rated value</li> <li>— at 230 V rated value</li> </ul> </li> <li>• for three-phase AC motor <ul style="list-style-type: none"> <li>— at 220/230 V rated value</li> <li>— at 460/480 V rated value</li> <li>— at 575/600 V rated value</li> </ul> </li> </ul>	2 hp 5 hp  10 hp 20 hp 25 hp
<b>Contact rating of auxiliary contacts according to UL</b>	A600 / Q600

### Short-circuit protection

<b>Design of the fuse link</b>	
<ul style="list-style-type: none"> <li>• for short-circuit protection of the main circuit <ul style="list-style-type: none"> <li>— with type of coordination 1 required</li> <li>— with type of assignment 2 required</li> </ul> </li> <li>• for short-circuit protection of the auxiliary switch required</li> </ul>	gL/gG NH 3NA, DIAZED 5SB, NEOZED 5SE: 125 A gL/gG NH 3NA, DIAZED 5SB, NEOZED 5SE: 50 A fuse gL/gG: 10 A

### Installation/ mounting/ dimensions

<b>Mounting position</b>	+/-180° rotation possible on vertical mounting surface; can be tilted forward and backward by +/- 22.5° on vertical mounting surface
<b>Mounting type</b>	screw and snap-on mounting onto 35 mm standard mounting rail
<b>Height</b>	114 mm
<b>Width</b>	90 mm
<b>Depth</b>	107 mm
<b>Required spacing</b>	
<ul style="list-style-type: none"> <li>• with side-by-side mounting <ul style="list-style-type: none"> <li>— forwards</li> <li>— Backwards</li> <li>— upwards</li> <li>— downwards</li> <li>— at the side</li> </ul> </li> <li>• for grounded parts <ul style="list-style-type: none"> <li>— forwards</li> <li>— Backwards</li> <li>— upwards</li> <li>— at the side</li> <li>— downwards</li> </ul> </li> <li>• for live parts <ul style="list-style-type: none"> <li>— forwards</li> <li>— Backwards</li> <li>— upwards</li> </ul> </li> </ul>	6 mm 0 mm 6 mm 6 mm 6 mm  6 mm 0 mm 6 mm 6 mm 6 mm  6 mm 0 mm 6 mm

- downwards
- at the side

6 mm

6 mm

## Connections/Terminals

### Type of electrical connection

- for main current circuit
- for auxiliary and control current circuit

spring-loaded terminals

spring-loaded terminals

### Type of connectable conductor cross-sections

- for main contacts
  - solid
  - single or multi-stranded
  - finely stranded with core end processing
  - finely stranded without core end processing
- at AWG conductors for main contacts

2x (1 ... 10 mm<sup>2</sup>)

2x (1 ... 10 mm<sup>2</sup>)

2x (1 ... 6 mm<sup>2</sup>)

2x (1 ... 6 mm<sup>2</sup>)

1x (18 ... 8)

### Type of connectable conductor cross-sections

- for auxiliary contacts
  - single or multi-stranded
  - finely stranded with core end processing
  - finely stranded without core end processing
- at AWG conductors for auxiliary contacts

2x (0,5 ... 2,5 mm<sup>2</sup>)

2x (0.5 ... 1.5 mm<sup>2</sup>)

2x (0.5 ... 1.5 mm<sup>2</sup>)

2x (20 ... 14)

## Safety related data

### B10 value

- with high demand rate acc. to SN 31920

1 000 000

### Proportion of dangerous failures

- with low demand rate acc. to SN 31920
- with high demand rate acc. to SN 31920

40 %

75 %

### Failure rate [FIT]

- with low demand rate acc. to SN 31920

100 FIT

### T1 value for proof test interval or service life acc. to IEC 61508

20 y

## Communication/ Protocol

### Product function Bus communication






Yes

### Protocol is supported

- AS-interface protocol

No

## Certificates/approvals

General Product Approval			Declaration of Conformity	Test Certificates	Marine / Shipping
				<a href="#">Special Test Certificate</a>	
CSA	UL		EG-Konf.		ABS

Marine / Shipping					
					
BUREAU VERITAS	GL	LRS	PRS	RMRS	DNV-GL DNVGL.COM/AF

other	Railway	
<a href="#">Environmental Confirmations</a>	<a href="#">Confirmation</a>	<a href="#">Vibration and Shock</a>

#### Further information

**Information- and Downloadcenter (Catalogs, Brochures,...)**

<http://www.siemens.com/industrial-controls/catalogs>

**Industry Mall (Online ordering system)**

<https://mall.industry.siemens.com/mall/en/en/Catalog/product?mlfb=3RA2327-8XE30-2BB4>

**Cax online generator**

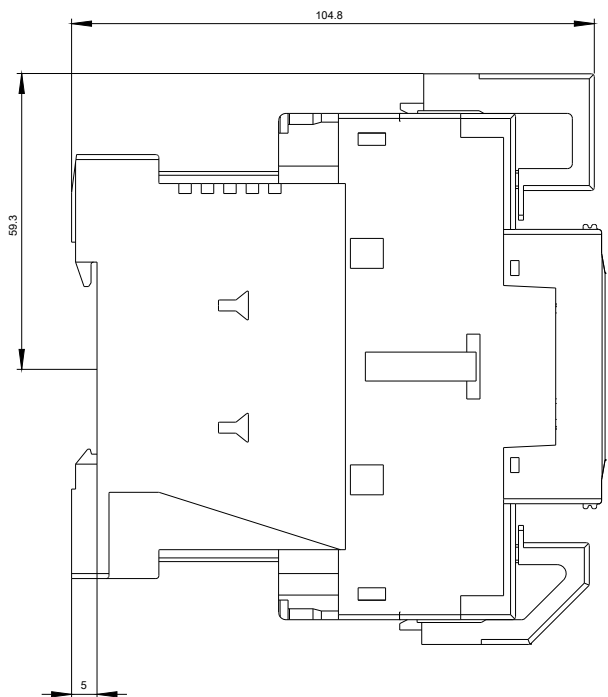
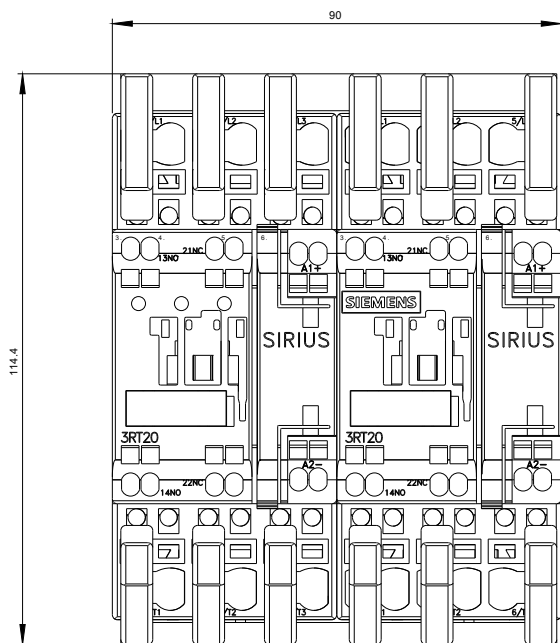
<http://support.automation.siemens.com/WW/CAXorder/default.aspx?lang=en&mlfb=3RA2327-8XE30-2BB4>

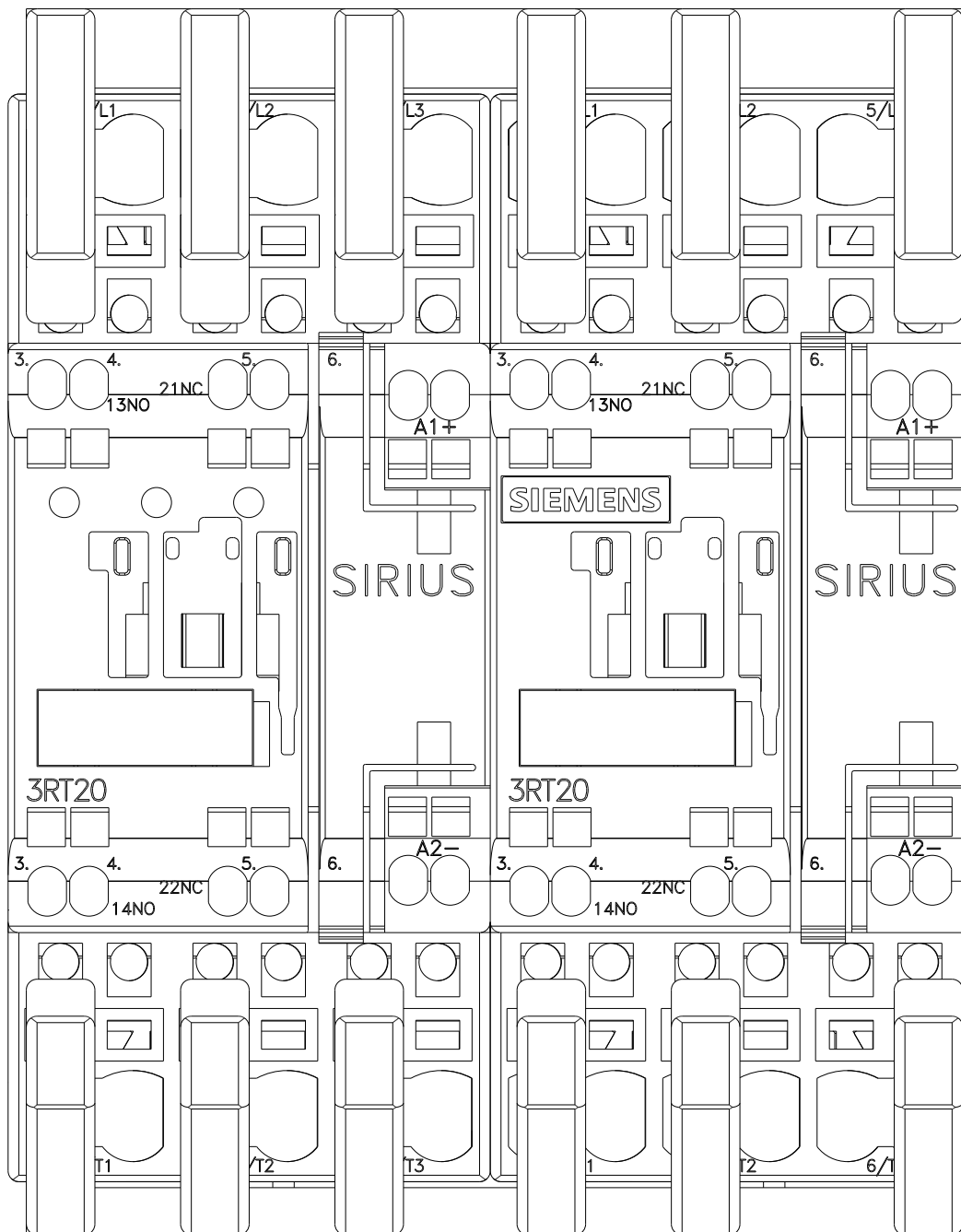
**Service&Support (Manuals, Certificates, Characteristics, FAQs,...)**

<https://support.industry.siemens.com/cs/ww/en/ps/3RA2327-8XE30-2BB4>

**Image database (product images, 2D dimension drawings, 3D models, device circuit diagrams, EPLAN macros, ...)**

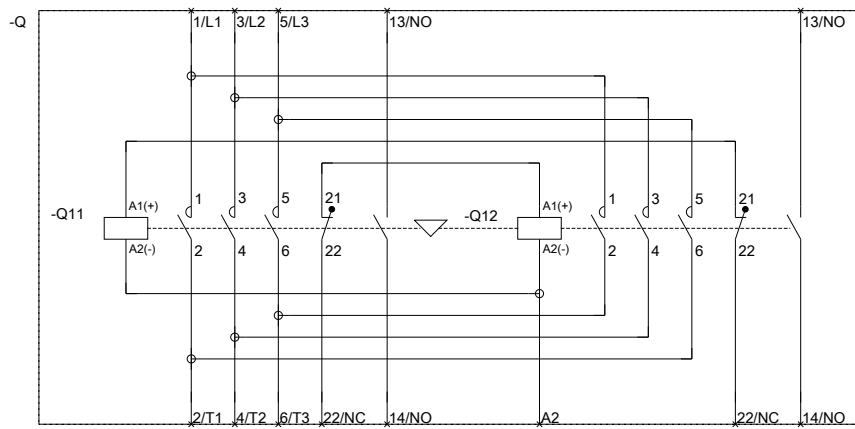
[http://www.automation.siemens.com/bilddb/cax\\_de.aspx?mlfb=3RA2327-8XE30-2BB4&lang=en](http://www.automation.siemens.com/bilddb/cax_de.aspx?mlfb=3RA2327-8XE30-2BB4&lang=en)







WENDEKOMBINATION BGR. S0



REVERSING COMB. SZ S0

last modified:

07/14/2017