



Similar to image

ACCESSORY FOR 3KD FRAME SIZE 5 DOOR-COUPLING HANDLE COMPLETE DRIVE RED/YELLOW INCL. SHAFT 300MM LENGTH AND COUPLING DRIVER LOCKABLE IN OFF

General technical details:

| | | |
|---|-----|----------------------------|
| product brand name | | SETRON |
| Type of the driving mechanism | | MANUAL OPERATING MECHANISM |
| Product equipment | | |
| • interlock | | Yes |
| • can be locked in OFF position | | Yes |
| Size for modular installation devices / suitable for DIN 43880 control cabinets | | No |
| Torque / of the rotary actuator / rated value | N·m | 55 |
| Length / of the slider for manual operation | mm | 200 |
| Delivery status / factory fitted with cover frame | | Yes |
| Length / of the extension shaft | mm | 300 |
| Profile / of extension shaft | | |
| • on coupling driver | | 12 x 12 mm |
| • on switch disconnecter | | 12 x 12 mm |

Dimensions and weights:

| | | |
|--------|----|-----|
| Height | mm | 100 |
| Width | mm | 250 |
| Depth | mm | 388 |

Net weight

g

999

Certificates/approvals:

General Product Approval

Further information:

Information- and Downloadcenter (Catalogs, Brochures,...)

<http://www.siemens.com/lowvoltage/catalogs>

Industry Mall (Online ordering system)

<https://eb.automation.siemens.com/mall/en/WW/Catalog/Product/3KD9515-2>

Service&Support (Manuals, Certificates, Characteristics, FAQs,...)

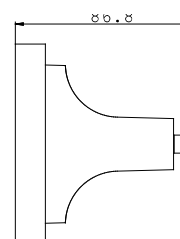
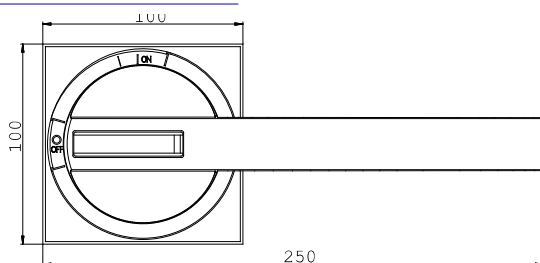
<http://support.automation.siemens.com/WW/view/en/3KD9515-2/all>

Image database (product images, 2D dimension drawings, 3D models, device circuit diagrams, ...)

http://www.automation.siemens.com/bilddb/cax_en.aspx?mlfb=3KD9515-2

CAX-Online-Generator

<http://www.siemens.com/cax>



last change:

Apr 21, 2014