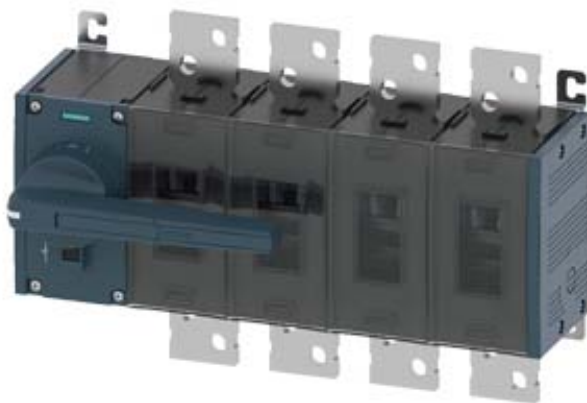


SWITCH-DISCONNECTOR 1600A,
 FRAME SIZE 5,
 4-POLE FRONT OPERATING LEFT COMPLETE
 ASSEMBLY WITH DIRECT HANDLE GREY FLAT
 TERMINAL



Similar to image

General technical details:

product brand name		SENTRON
Product designation		Switching device
Design of the product		3KD Switch Disconnectors
Size of switch disconnector		5
Number of poles		4
Continuous current		
• rated value	A	1,600
• at 40 °C / rated value	A	1,600
• at 45 °C / rated value	A	1,600
• at 50 °C / rated value	A	1,600
• at 55 °C / rated value	A	1,600
• at 60 °C / rated value	A	1,250
• at 65 °C / rated value	A	1,250
• at 70 °C / rated value	A	1,250
• at DC / rated value	A	1,600
Operating current		
• at AC-21 A		
• at 400 V / maximum	A	1,600

• at 500 V / maximum	A	1,600
• at 690 V / maximum	A	1,600
• at AC-22 A		
• at 400 V / at 50/60 Hz / rated value / maximum	A	1,600
• at 500 V / at 50/60 Hz / rated value / maximum	A	1,600
• at 690 V / at 50/60 Hz / rated value / maximum	A	1,600
• at AC-23 A		
• at 400 V / at 50/60 Hz / rated value / maximum	A	800
• at 500 V / at 50/60 Hz / rated value / maximum	A	800
• at 690 V / at 50/60 Hz / rated value / maximum	A	800
Operational voltage		
• at 50/60 Hz / for AC / rated value	V	690
• with 3 current paths in series / with DC / rated value	V	440
Insulation voltage / rated value	V	1,000
Impulse voltage resistance / rated value	kV	12
Overvoltage class		IV
Operating power / at AC-23 A		
• at 400 V / at 50/60 Hz / rated value	kW	400
• at 500 V / at 50/60 Hz / rated value	kW	560
• at 690 V / at 50/60 Hz / rated value	kW	800
I²t value / with closed switch		
• for combination switch + fuse		
• at 400 V / maximum	A ² ·s	30,900,000
• at 500 V / maximum	A ² ·s	30,900,000
Let-through current / with closed switch		
• for combination switch + fuse		
• at 400 V / maximum permissible	A	110,000
• at 500 V / maximum permissible	A	110,000
Short-time current resistance (I_{cw}) / limited to 1 s / rated value	kA	50
Making capacity short-circuit current (I_{cm}) / for switch disconnector / without fuse link / rated value / minimum	kA	105
Conditional short-circuit current / with line-side fuse protection		
• at 500 V / by gG fuse / rated value	kA	80
Active power loss / with conventional rated thermal current / per pole	W	120
Product equipment / interlock		Yes
Type of the driving mechanism / motor drive		No
Product extension / optional / motor drive		No
Design of the electrical connection / for main current circuit		flat connector
Type of connectable conductor cross-sections		

<ul style="list-style-type: none"> • for copper conductor / stranded / with lug <ul style="list-style-type: none"> • according to DIN 46234 • according to DIN 46235 • for copper busbar 		1x (120 ... 240 mm ²), 2x (95 ... 240 mm ²) 1x (120 ... 240 mm ²), 2x (95 ... 240 mm ²) 2x (60x10 mm ²)
Number of connected NC contacts / for auxiliary contacts		0
Number of connected NO contacts / for auxiliary contacts		0
Number of connected changeover contacts / for auxiliary contacts		0
Product extension / auxiliary switch		Yes
Number of NC contacts / for auxiliary contacts		8
Number of NO contacts / for auxiliary contacts		8
Number of changeover contacts / for auxiliary contacts		0
Acceptability for application / switch disconnecter		Yes
Acceptability for application <ul style="list-style-type: none"> • emergency stop switch • main switch • safety cut-out switch • maintenance/repair switch 		No Yes Yes Yes
Design of the operating mechanism		manual operating mechanism
Mounting type		floor mounting
Mounting type / rail mounting		No
Mounting type / front mounting with 4-hole attachment		No
Mounting type / front mounting with central attachment		No
Type from device		fixed mounting
mounting position		any
Position / of switch operating mechanism		at the left end
Design of handle		direct handle, grey
Width	mm	472
Height	mm	310
Depth	mm	212.5
Protection class IP <ul style="list-style-type: none"> • on the front • with closed switch / with cover or cable lug cover 		IP00 IP00 IP20
Ambient temperature <ul style="list-style-type: none"> • during operating • during storage 	°C °C	-25 ... +70 -50 ... +80
Degree of pollution		3
Mechanical operating cycles as operating time / typical		6,000
Electrical endurance (switching cycles) <ul style="list-style-type: none"> • at AC-23 A / at 690 V / at 50/60 Hz 		500

<ul style="list-style-type: none"> • at DC-23 A • at 220 V • at 440 V 		500
		500
Design of display		
<ul style="list-style-type: none"> • for switch position indicator manual operation 		ON-OFF-TEST
Net weight	g	20,700
Reference code / according to DIN EN 61346-2		Q
Item designation / according to DIN EN 81346-2		Q

Certificates/approvals:

General Product Approval

Declaration of Conformity



Further information:

Information- and Downloadcenter (Catalogs, Brochures,...)

<http://www.siemens.com/lowvoltage/catalogs>

Industry Mall (Online ordering system)

<https://eb.automation.siemens.com/mall/en/WW/Catalog/Product/3KD5442-0RE10-0>

Service&Support (Manuals, Certificates, Characteristics, FAQs,...)

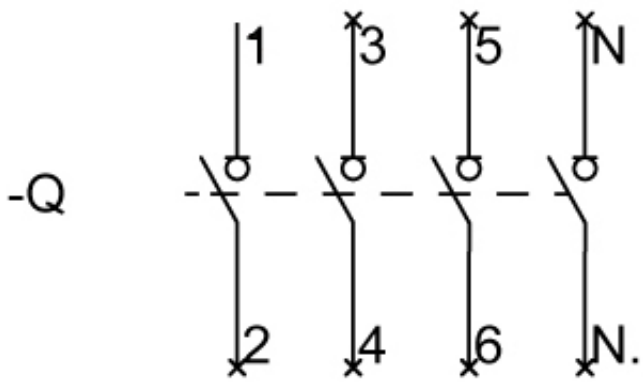
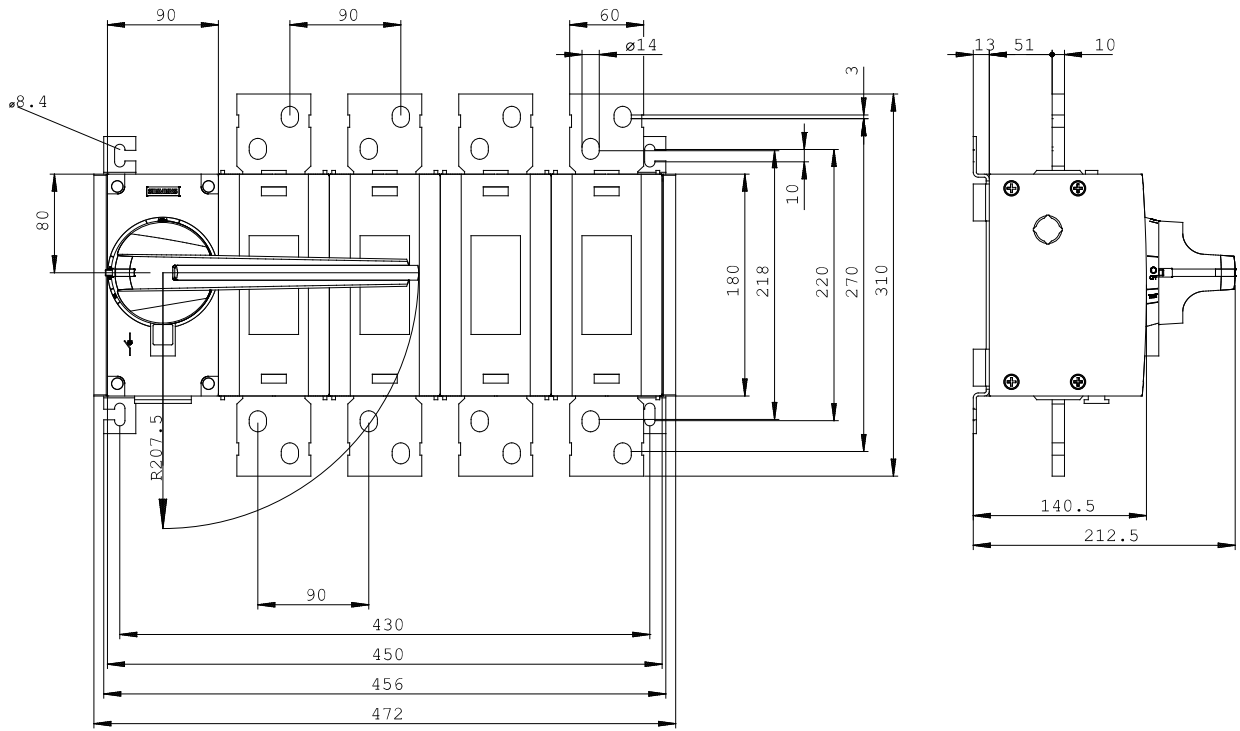
<http://support.automation.siemens.com/WWW/view/en/3KD5442-0RE10-0/all>

Image database (product images, 2D dimension drawings, 3D models, device circuit diagrams, ...)

http://www.automation.siemens.com/bilddb/cax_en.aspx?mlfb=3KD5442-0RE10-0

CAX-Online-Generator

<http://www.siemens.com/cax>



last change:

Apr 21, 2014