



SWITCH-DISCONNECTOR 80A, FRAME SIZE 2,  
3-POLE FRONT OPERATING CENTER BASIC UNIT  
WITHOUT HANDLE BOX TERMINAL

Similar to image

General technical details:		
product brand name		SENTRON
Product designation		Switching device
Design of the product		3KD Switch Disconnectors
Size of switch disconnector		2
Number of poles		3
Continuous current		
• rated value	A	80
• at 40 °C / rated value	A	80
• at 45 °C / rated value	A	80
• at 50 °C / rated value	A	80
• at 55 °C / rated value	A	80
• at 60 °C / rated value	A	80
• at 65 °C / rated value	A	80
• at 70 °C / rated value	A	80
• at DC / rated value	A	80
Operating current		
• at AC-21 A		
• at 400 V / maximum	A	80

<ul style="list-style-type: none"> <li>• at 500 V / maximum</li> </ul>	A	80
<ul style="list-style-type: none"> <li>• at 690 V / maximum</li> </ul>	A	80
<ul style="list-style-type: none"> <li>• at AC-22 A <ul style="list-style-type: none"> <li>• at 400 V / at 50/60 Hz / rated value / maximum</li> <li>• at 500 V / at 50/60 Hz / rated value / maximum</li> <li>• at 690 V / at 50/60 Hz / rated value / maximum</li> </ul> </li> </ul>	A	80
	A	80
	A	80
<ul style="list-style-type: none"> <li>• at AC-23 A <ul style="list-style-type: none"> <li>• at 400 V / at 50/60 Hz / rated value / maximum</li> <li>• at 500 V / at 50/60 Hz / rated value / maximum</li> <li>• at 690 V / at 50/60 Hz / rated value / maximum</li> </ul> </li> </ul>	A	80
	A	80
	A	80
<ul style="list-style-type: none"> <li>• at DC-21 A <ul style="list-style-type: none"> <li>• at 220 V / maximum / note</li> <li>• at 440 V / rated value / maximum / note</li> </ul> </li> </ul>		80 / 2
		80 / 3
<ul style="list-style-type: none"> <li>• at DC-22 A <ul style="list-style-type: none"> <li>• at 220 V / rated value / maximum / note</li> <li>• at 440 V / rated value / maximum / note</li> </ul> </li> </ul>		80 / 2
		80 / 3
<ul style="list-style-type: none"> <li>• at DC-23 A <ul style="list-style-type: none"> <li>• at 220 V / rated value / maximum / note</li> <li>• at 440 V / rated value / maximum / note</li> </ul> </li> </ul>		80 / 2
		80 / 3
<b>Operational voltage</b>		
<ul style="list-style-type: none"> <li>• at 50/60 Hz / for AC / rated value</li> </ul>	V	690
<ul style="list-style-type: none"> <li>• with 3 current paths in series / with DC / rated value</li> </ul>	V	440
<b>Insulation voltage / rated value</b>	V	1,000
<b>Impulse voltage resistance / rated value</b>	kV	8
<b>Overvoltage class</b>		III
<b>Operating power / at AC-23 A</b>		
<ul style="list-style-type: none"> <li>• at 400 V / at 50/60 Hz / rated value</li> </ul>	kW	37
<ul style="list-style-type: none"> <li>• at 500 V / at 50/60 Hz / rated value</li> </ul>	kW	55
<ul style="list-style-type: none"> <li>• at 690 V / at 50/60 Hz / rated value</li> </ul>	kW	75
<b>I<sup>2</sup>t value / with closed switch</b>		
<ul style="list-style-type: none"> <li>• for combination switch + fuse <ul style="list-style-type: none"> <li>• at 400 V / maximum</li> <li>• at 500 V / maximum</li> </ul> </li> </ul>	A <sup>2</sup> ·s	135,600
	A <sup>2</sup> ·s	135,600
<ul style="list-style-type: none"> <li>• at 690 V <ul style="list-style-type: none"> <li>• for combination switch +gG fuse / maximum</li> <li>• for combination switch +aM fuse / maximum</li> </ul> </li> </ul>	A <sup>2</sup> ·s	178,300
	A <sup>2</sup> ·s	201,200
<b>Let-through current / with closed switch</b>		
<ul style="list-style-type: none"> <li>• for combination switch + fuse <ul style="list-style-type: none"> <li>• at 400 V / maximum permissible</li> <li>• at 500 V / maximum permissible</li> </ul> </li> </ul>	A	17,900
	A	17,900

<ul style="list-style-type: none"> <li>• at 690 V</li> <li>• with combination switch +gG fuse / maximum permissible</li> <li>• with combination switch +aM fuse / maximum permissible</li> </ul>	A	17,600
	A	18,700
<b>Short-time current resistance (I<sub>cw</sub>) / limited to 1 s / rated value</b>	kA	4
<b>Making capacity short-circuit current (I<sub>cm</sub>) / for switch disconnecter / without fuse link / rated value / minimum</b>	kA	12
<b>Conditional short-circuit current / with line-side fuse protection</b>		
<ul style="list-style-type: none"> <li>• at 500 V / by gG fuse / rated value</li> <li>• at 690 V / by gG fuse / rated value</li> </ul>	kA	100
	kA	65
<b>Active power loss / with conventional rated thermal current / per pole</b>	W	2
<b>Product equipment / interlock</b>		No
<b>Type of the driving mechanism / motor drive</b>		No
<b>Product extension / optional / motor drive</b>		No
<b>Design of the electrical connection / for main current circuit</b>		Box terminal
<b>Type of connectable conductor cross-sections</b>		
<ul style="list-style-type: none"> <li>• for copper conductor</li> <li>• solid</li> <li>• stranded</li> <li>• finely stranded / with end sleeve</li> <li>• with flexible busbar</li> </ul>		1x (2,5 ... 16mm <sup>2</sup> ) 1x (10 ... 70 mm <sup>2</sup> ) 1x (2,5 ... 70mm <sup>2</sup> ) 3x (0,8x14mm <sup>2</sup> )
<b>Number of connected NC contacts / for auxiliary contacts</b>		0
<b>Number of connected NO contacts / for auxiliary contacts</b>		0
<b>Number of connected changeover contacts / for auxiliary contacts</b>		0
<b>Product extension / auxiliary switch</b>		Yes
<b>Number of NC contacts / for auxiliary contacts</b>		0
<b>Number of NO contacts / for auxiliary contacts</b>		0
<b>Number of changeover contacts / for auxiliary contacts</b>		4
<b>Acceptability for application / switch disconnecter</b>		Yes
<b>Acceptability for application</b>		
<ul style="list-style-type: none"> <li>• emergency stop switch</li> <li>• main switch</li> <li>• safety cut-out switch</li> <li>• maintenance/repair switch</li> </ul>		No Yes Yes Yes
<b>Design of the operating mechanism</b>		without
<b>Mounting type</b>		Floor mounting and snap-on mounting to 35 mm standard mounting rail
<b>Mounting type / rail mounting</b>		Yes
<b>Mounting type / front mounting with 4-hole attachment</b>		No
<b>Mounting type / front mounting with central attachment</b>		No

Type from device		fixed mounting
mounting position		any
Position / of switch operating mechanism		after the first pole
Design of handle		without
Width	mm	121
Height	mm	126
Depth	mm	68
Protection class IP		IP20
• on the front		IP20
• with closed switch / with cover or cable lug cover		IP20
Ambient temperature		
• during operating	°C	-25 ... +70
• during storage	°C	-50 ... +80
Degree of pollution		3
Mechanical operating cycles as operating time / typical		15,000
Electrical endurance (switching cycles)		
• at AC-23 A / at 690 V / at 50/60 Hz		1,500
• at DC-23 A		
• at 220 V		1,500
• at 440 V		1,500
Design of display		
• for switch position indicator door-coupling rotary operating mechanism		ON-OFF
Net weight	g	850
Reference code / according to DIN EN 61346-2		Q
Item designation / according to DIN EN 81346-2		Q

#### Certificates/approvals:

General Product  
Approval

Declaration of Conformity



#### Further information:

Information- and Downloadcenter (Catalogs, Brochures,...)

<http://www.siemens.com/lowvoltage/catalogs>

Industry Mall (Online ordering system)

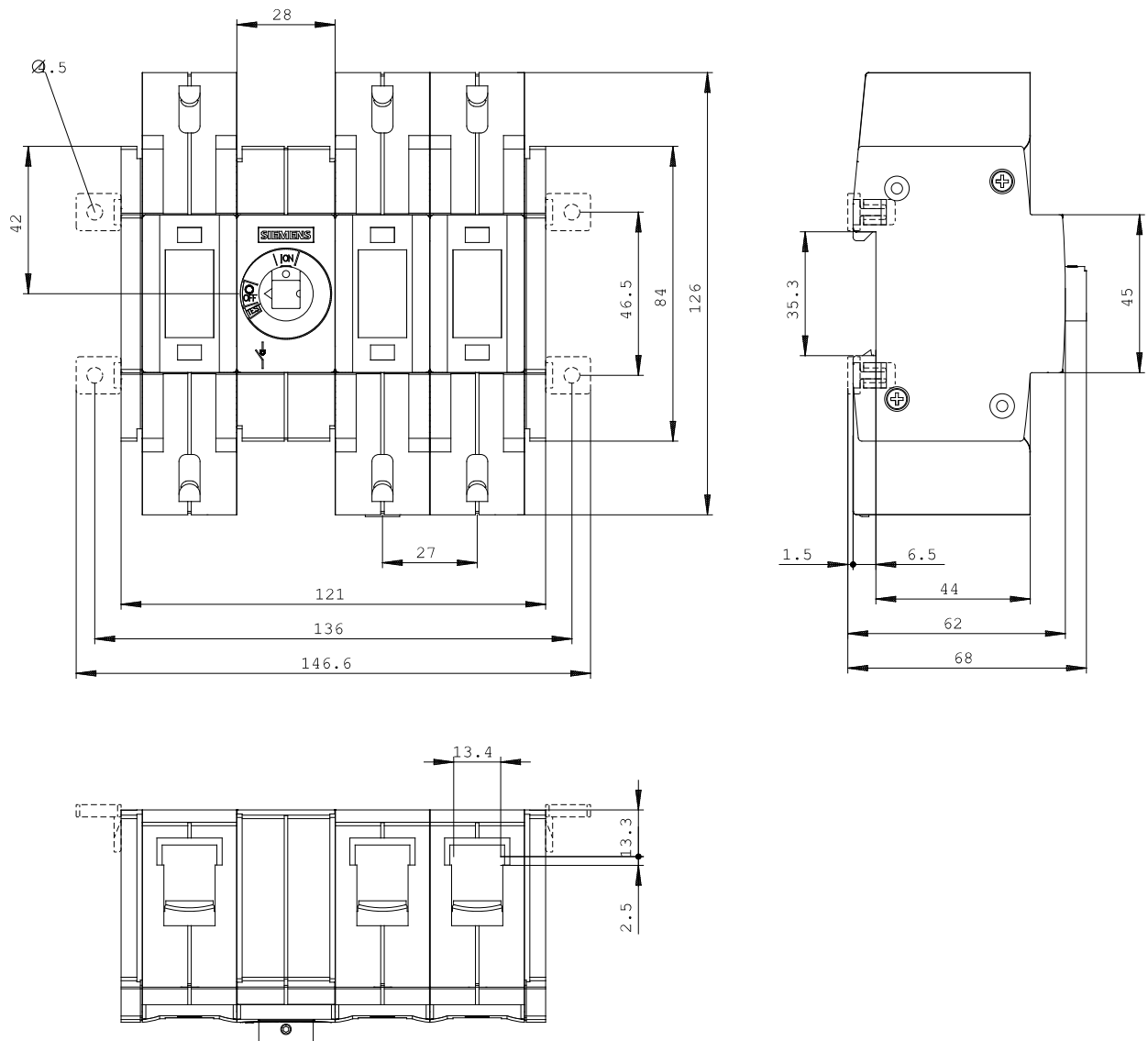
<https://eb.automation.siemens.com/mall/en/WW/Catalog/Product/3KD2830-2NE20-0>

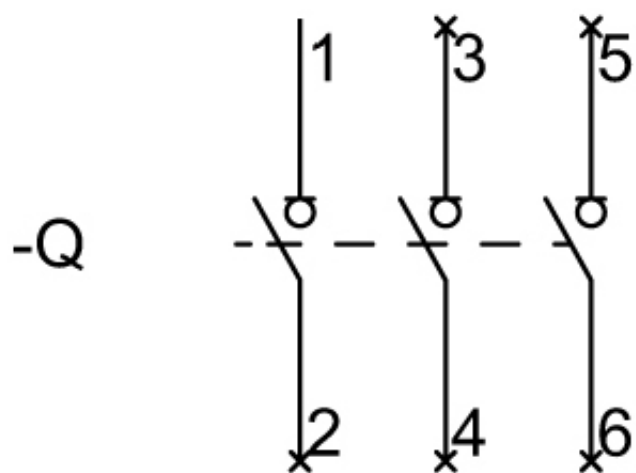
Service&Support (Manuals, Certificates, Characteristics, FAQs,...)

<http://support.automation.siemens.com/WW/view/en/3KD2830-2NE20-0/all>

**Tender specifications**

[Datanorm](#) [GAEB81](#) [GAEB83](#) [RTF](#) [TXT](#)





last change:

Apr 21, 2014