



SWITCH-DISCONNECTOR 80A, FRAME SIZE 2,
3-POLE FRONT OPERATING LEFT COMPLETE
ASSEMBLY WITH DIRECT HANDLE GREY BOX
TERMINAL

Similar to image

| General technical details: | | |
|-----------------------------|---|--------------------------|
| product brand name | | SETRON |
| Product designation | | Switching device |
| Design of the product | | 3KD Switch Disconnectors |
| Size of switch disconnector | | 2 |
| Number of poles | | 3 |
| Continuous current | | |
| • rated value | A | 80 |
| • at 40 °C / rated value | A | 80 |
| • at 45 °C / rated value | A | 80 |
| • at 50 °C / rated value | A | 80 |
| • at 55 °C / rated value | A | 80 |
| • at 60 °C / rated value | A | 80 |
| • at 65 °C / rated value | A | 80 |
| • at 70 °C / rated value | A | 80 |
| • at DC / rated value | A | 80 |
| Operating current | | |
| • at AC-21 A | | |
| • at 400 V / maximum | A | 80 |

| | | |
|--|-------------------|---------|
| <ul style="list-style-type: none"> • at 500 V / maximum | A | 80 |
| <ul style="list-style-type: none"> • at 690 V / maximum | A | 80 |
| <ul style="list-style-type: none"> • at AC-22 A <ul style="list-style-type: none"> • at 400 V / at 50/60 Hz / rated value / maximum • at 500 V / at 50/60 Hz / rated value / maximum • at 690 V / at 50/60 Hz / rated value / maximum | A | 80 |
| | A | 80 |
| | A | 80 |
| <ul style="list-style-type: none"> • at AC-23 A <ul style="list-style-type: none"> • at 400 V / at 50/60 Hz / rated value / maximum • at 500 V / at 50/60 Hz / rated value / maximum • at 690 V / at 50/60 Hz / rated value / maximum | A | 80 |
| | A | 80 |
| | A | 80 |
| <ul style="list-style-type: none"> • at DC-21 A <ul style="list-style-type: none"> • at 220 V / maximum / note • at 440 V / rated value / maximum / note | | 80 / 2 |
| | | 80 / 3 |
| <ul style="list-style-type: none"> • at DC-22 A <ul style="list-style-type: none"> • at 220 V / rated value / maximum / note • at 440 V / rated value / maximum / note | | 80 / 2 |
| | | 80 / 3 |
| <ul style="list-style-type: none"> • at DC-23 A <ul style="list-style-type: none"> • at 220 V / rated value / maximum / note • at 440 V / rated value / maximum / note | | 80 / 2 |
| | | 80 / 3 |
| Operational voltage | | |
| <ul style="list-style-type: none"> • at 50/60 Hz / for AC / rated value | V | 690 |
| <ul style="list-style-type: none"> • with 3 current paths in series / with DC / rated value | V | 440 |
| Insulation voltage / rated value | V | 1,000 |
| Impulse voltage resistance / rated value | kV | 8 |
| Overvoltage class | | III |
| Operating power / at AC-23 A | | |
| <ul style="list-style-type: none"> • at 400 V / at 50/60 Hz / rated value | kW | 37 |
| <ul style="list-style-type: none"> • at 500 V / at 50/60 Hz / rated value | kW | 55 |
| <ul style="list-style-type: none"> • at 690 V / at 50/60 Hz / rated value | kW | 75 |
| I²t value / with closed switch | | |
| <ul style="list-style-type: none"> • for combination switch + fuse <ul style="list-style-type: none"> • at 400 V / maximum • at 500 V / maximum | A ² ·s | 135,600 |
| | A ² ·s | 135,600 |
| <ul style="list-style-type: none"> • at 690 V <ul style="list-style-type: none"> • for combination switch +gG fuse / maximum • for combination switch +aM fuse / maximum | A ² ·s | 178,300 |
| | A ² ·s | 201,200 |
| Let-through current / with closed switch | | |
| <ul style="list-style-type: none"> • for combination switch + fuse <ul style="list-style-type: none"> • at 400 V / maximum permissible • at 500 V / maximum permissible | A | 17,900 |
| | A | 17,900 |

| | | |
|--|----|--|
| <ul style="list-style-type: none"> • at 690 V • with combination switch +gG fuse / maximum permissible • with combination switch +aM fuse / maximum permissible | A | 17,600 |
| | A | 18,700 |
| Short-time current resistance (I_{cw}) / limited to 1 s / rated value | kA | 4 |
| Making capacity short-circuit current (I_{cm}) / for switch disconnecter / without fuse link / rated value / minimum | kA | 12 |
| Conditional short-circuit current / with line-side fuse protection | | |
| <ul style="list-style-type: none"> • at 500 V / by gG fuse / rated value • at 690 V / by gG fuse / rated value | kA | 100 |
| | kA | 65 |
| Active power loss / with conventional rated thermal current / per pole | W | 2 |
| Product equipment / interlock | | Yes |
| Type of the driving mechanism / motor drive | | No |
| Product extension / optional / motor drive | | No |
| Design of the electrical connection / for main current circuit | | Box terminal |
| Type of connectable conductor cross-sections | | |
| <ul style="list-style-type: none"> • for copper conductor • solid • stranded • finely stranded / with end sleeve • with flexible busbar | | 1x (2,5 ... 16mm ²) 1x (10 ... 70 mm ²) 1x (2,5 ... 70mm ²) 3x (0,8x14mm ²) |
| Number of connected NC contacts / for auxiliary contacts | | 0 |
| Number of connected NO contacts / for auxiliary contacts | | 0 |
| Number of connected changeover contacts / for auxiliary contacts | | 0 |
| Product extension / auxiliary switch | | Yes |
| Number of NC contacts / for auxiliary contacts | | 0 |
| Number of NO contacts / for auxiliary contacts | | 0 |
| Number of changeover contacts / for auxiliary contacts | | 4 |
| Acceptability for application / switch disconnecter | | Yes |
| Acceptability for application | | |
| <ul style="list-style-type: none"> • emergency stop switch • main switch • safety cut-out switch • maintenance/repair switch | | No Yes Yes Yes |
| Design of the operating mechanism | | manual operating mechanism |
| Mounting type | | Floor mounting and snap-on mounting to 35 mm standard mounting rail |
| Mounting type / rail mounting | | Yes |
| Mounting type / front mounting with 4-hole attachment | | No |
| Mounting type / front mounting with central attachment | | No |

| | | |
|---|----|---------------------|
| Type from device | | fixed mounting |
| mounting position | | any |
| Position / of switch operating mechanism | | at the left end |
| Design of handle | | direct handle, grey |
| Width | mm | 121 |
| Height | mm | 126 |
| Depth | mm | 97 |
| Protection class IP | | IP20 |
| • on the front | | IP20 |
| • with closed switch / with cover or cable lug cover | | IP20 |
| Ambient temperature | | |
| • during operating | °C | -25 ... +70 |
| • during storage | °C | -50 ... +80 |
| Degree of pollution | | 3 |
| Mechanical operating cycles as operating time / typical | | 15,000 |
| Electrical endurance (switching cycles) | | |
| • at AC-23 A / at 690 V / at 50/60 Hz | | 1,500 |
| • at DC-23 A | | |
| • at 220 V | | 1,500 |
| • at 440 V | | 1,500 |
| Design of display | | |
| • for switch position indicator manual operation | | ON-OFF-TEST |
| Net weight | g | 850 |
| Reference code / according to DIN EN 61346-2 | | Q |
| Item designation / according to DIN EN 81346-2 | | Q |

Certificates/approvals:

General Product
Approval

Declaration of Conformity



Further information:

Information- and Downloadcenter (Catalogs, Brochures,...)

<http://www.siemens.com/lowvoltage/catalogs>

Industry Mall (Online ordering system)

<https://eb.automation.siemens.com/mall/en/WW/Catalog/Product/3KD2832-2NE10-0>

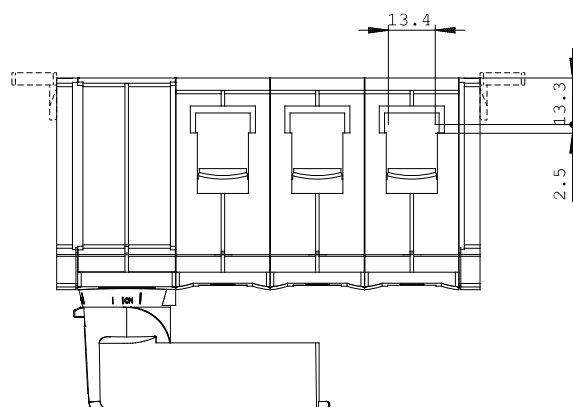
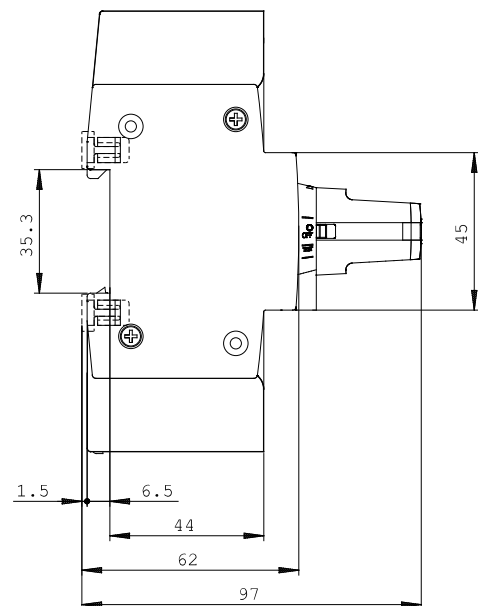
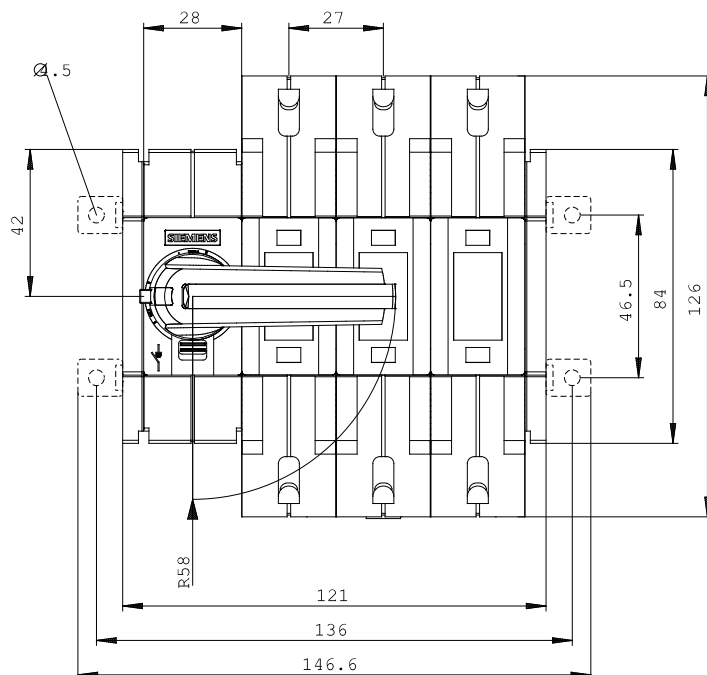
Service&Support (Manuals, Certificates, Characteristics, FAQs,...)

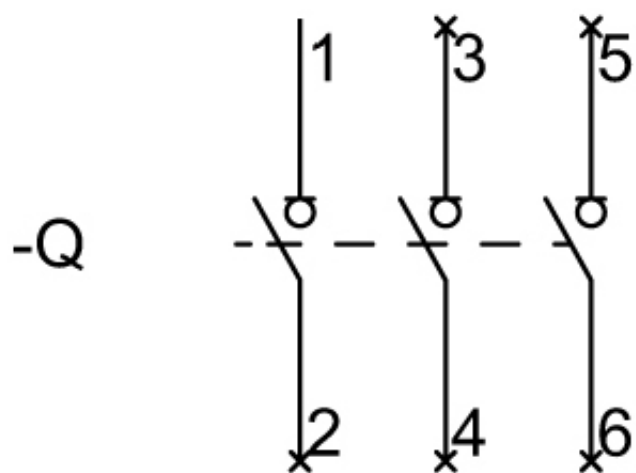
<http://support.automation.siemens.com/WW/view/en/3KD2832-2NE10-0/all>

Image database (product images, 2D dimension drawings, 3D models, device circuit diagrams, ...)

http://www.automation.siemens.com/bilddb/cax_en.aspx?mlfb=3KD2832-2NE10-0

Tender specifications
[Datanorm](#) [GAEB81](#) [GAEB83](#) [RTF](#) [TXT](#)





last change:

Apr 21, 2014