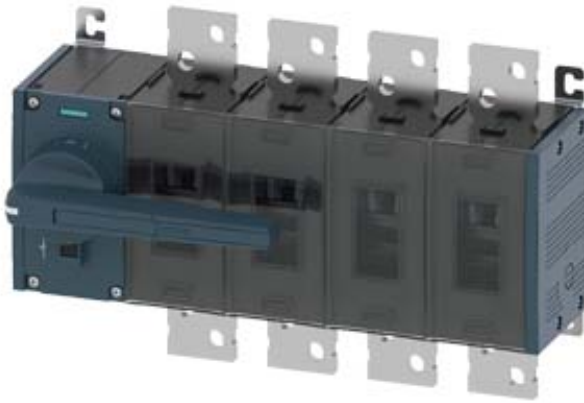


SWITCH-DISCONNECTOR 1000A,  
 FRAME SIZE 5,  
 4-POLE FRONT OPERATING LEFT COMPLETE  
 ASSEMBLY WITH DIRECT HANDLE GREY FLAT  
 TERMINAL



Similar to image

**General technical details:**

|                                    |   |                          |
|------------------------------------|---|--------------------------|
| <b>product brand name</b>          |   | SENTRON                  |
| <b>Product designation</b>         |   | Switching device         |
| <b>Design of the product</b>       |   | 3KD Switch Disconnectors |
| <b>Size of switch disconnector</b> |   | 5                        |
| <b>Number of poles</b>             |   | 4                        |
| <b>Continuous current</b>          |   |                          |
| • rated value                      | A | 1,000                    |
| • at 40 °C / rated value           | A | 1,000                    |
| • at 45 °C / rated value           | A | 1,000                    |
| • at 50 °C / rated value           | A | 1,000                    |
| • at 55 °C / rated value           | A | 1,000                    |
| • at 60 °C / rated value           | A | 1,000                    |
| • at 65 °C / rated value           | A | 1,000                    |
| • at 70 °C / rated value           | A | 1,000                    |
| • at DC / rated value              | A | 1,000                    |
| <b>Operating current</b>           |   |                          |
| • at AC-21 A                       |   |                          |
| • at 400 V / maximum               | A | 1,000                    |

|   |                   |                |
|---|-------------------|----------------|
| • at 500 V / maximum  | A                 | 1,000          |
| • at 690 V / maximum  | A                 | 1,000          |
| • at AC-22 A  |                   |                |
| • at 400 V / at 50/60 Hz / rated value / maximum  | A                 | 1,000          |
| • at 500 V / at 50/60 Hz / rated value / maximum  | A                 | 1,000          |
| • at 690 V / at 50/60 Hz / rated value / maximum  | A                 | 1,000          |
| • at AC-23 A  |                   |                |
| • at 400 V / at 50/60 Hz / rated value / maximum  | A                 | 800            |
| • at 500 V / at 50/60 Hz / rated value / maximum  | A                 | 800            |
| • at 690 V / at 50/60 Hz / rated value / maximum  | A                 | 800            |
| <b>Operational voltage</b>  |                   |                |
| • at 50/60 Hz / for AC / rated value  | V                 | 690            |
| • with 3 current paths in series / with DC / rated value  | V                 | 440            |
| <b>Insulation voltage / rated value</b>   | V                 | 1,000          |
| <b>Impulse voltage resistance / rated value</b>   | kV                | 12             |
| <b>Overvoltage class</b>  |                   | IV             |
| <b>Operating power / at AC-23 A</b>   |                   |                |
| • at 400 V / at 50/60 Hz / rated value  | kW                | 400            |
| • at 500 V / at 50/60 Hz / rated value  | kW                | 560            |
| • at 690 V / at 50/60 Hz / rated value  | kW                | 800            |
| <b>I<sup>2</sup>t value / with closed switch</b>  |                   |                |
| • for combination switch + fuse   |                   |                |
| • at 400 V / maximum  | A <sup>2</sup> ·s | 15,400,000     |
| • at 500 V / maximum  | A <sup>2</sup> ·s | 15,400,000     |
| <b>Let-through current / with closed switch</b>   |                   |                |
| • for combination switch + fuse   |                   |                |
| • at 400 V / maximum permissible  | A                 | 95,900         |
| • at 500 V / maximum permissible  | A                 | 95,900         |
| <b>Short-time current resistance (I<sub>cw</sub>) / limited to 1 s / rated value</b>  | kA                | 50             |
| <b>Making capacity short-circuit current (I<sub>cm</sub>) / for switch disconnecter / without fuse link / rated value / minimum</b> | kA                | 105            |
| <b>Conditional short-circuit current / with line-side fuse protection</b>   |                   |                |
| • at 500 V / by gG fuse / rated value   | kA                | 100            |
| <b>Active power loss / with conventional rated thermal current / per pole</b>   | W                 | 47             |
| <b>Product equipment / interlock</b>  |                   | Yes            |
| <b>Type of the driving mechanism / motor drive</b>  |                   | No             |
| <b>Product extension / optional / motor drive</b>   |                   | No             |
| <b>Design of the electrical connection / for main current circuit</b>   |                   | flat connector |
| <b>Type of connectable conductor cross-sections</b>   |                   |                |

|   |          |   |
|---|----------|---|
| <ul style="list-style-type: none"> <li>• for copper conductor / stranded / with lug <ul style="list-style-type: none"> <li>• according to DIN 46234</li> <li>• according to DIN 46235</li> </ul> </li> <li>• for copper busbar</li> </ul> |          | 1x (120 ... 240 mm <sup>2</sup> ), 2x (95 ... 240 mm <sup>2</sup> )<br>1x (120 ... 240 mm <sup>2</sup> ), 2x (95 ... 240 mm <sup>2</sup> )<br>2x (60x10 mm <sup>2</sup> ) |
| <b>Number of connected NC contacts / for auxiliary contacts</b>   |          | 0   |
| <b>Number of connected NO contacts / for auxiliary contacts</b>   |          | 0   |
| <b>Number of connected changeover contacts / for auxiliary contacts</b>   |          | 0   |
| <b>Product extension / auxiliary switch</b>   |          | Yes   |
| <b>Number of NC contacts / for auxiliary contacts</b>   |          | 8   |
| <b>Number of NO contacts / for auxiliary contacts</b>   |          | 8   |
| <b>Number of changeover contacts / for auxiliary contacts</b>   |          | 0   |
| <b>Acceptability for application / switch disconnecter</b>  |          | Yes   |
| <b>Acceptability for application</b> <ul style="list-style-type: none"> <li>• emergency stop switch</li> <li>• main switch</li> <li>• safety cut-out switch</li> <li>• maintenance/repair switch</li> </ul>                               |          | No<br>Yes<br>Yes<br>Yes   |
| <b>Design of the operating mechanism</b>  |          | manual operating mechanism  |
| <b>Mounting type</b>  |          | floor mounting  |
| <b>Mounting type / rail mounting</b>  |          | No  |
| <b>Mounting type / front mounting with 4-hole attachment</b>  |          | No  |
| <b>Mounting type / front mounting with central attachment</b>   |          | No  |
| <b>Type from device</b>   |          | fixed mounting  |
| <b>mounting position</b>  |          | any   |
| <b>Position / of switch operating mechanism</b>   |          | at the left end   |
| <b>Design of handle</b>   |          | direct handle, grey   |
| <b>Width</b>  | mm       | 472   |
| <b>Height</b>   | mm       | 310   |
| <b>Depth</b>  | mm       | 212.5   |
| <b>Protection class IP</b> <ul style="list-style-type: none"> <li>• on the front</li> <li>• with closed switch / with cover or cable lug cover</li> </ul>   |          | IP00<br>IP00<br>IP20  |
| <b>Ambient temperature</b> <ul style="list-style-type: none"> <li>• during operating</li> <li>• during storage</li> </ul>   | °C<br>°C | -25 ... +70<br>-50 ... +80  |
| <b>Degree of pollution</b>  |          | 3   |
| <b>Mechanical operating cycles as operating time / typical</b>  |          | 6,000   |
| <b>Electrical endurance (switching cycles)</b> <ul style="list-style-type: none"> <li>• at AC-23 A / at 690 V / at 50/60 Hz</li> </ul>  |          | 500   |

|  |   |             |
|--|---|-------------|
| <ul style="list-style-type: none"> <li>• at DC-23 A</li> <li>• at 220 V</li> <li>• at 440 V</li> </ul> |   | 500         |
|  |   | 500         |
| <b>Design of display</b>   |   |             |
| <ul style="list-style-type: none"> <li>• for switch position indicator manual operation</li> </ul>     |   | ON-OFF-TEST |
| <b>Net weight</b>  | g | 20,700      |
| <b>Reference code / according to DIN EN 61346-2</b>  |   | Q           |
| <b>Item designation / according to DIN EN 81346-2</b>  |   | Q           |

#### Certificates/approvals:

**General Product Approval**

**Declaration of Conformity**



#### Further information:

**Information- and Downloadcenter (Catalogs, Brochures,...)**

<http://www.siemens.com/lowvoltage/catalogs>

**Industry Mall (Online ordering system)**

<https://eb.automation.siemens.com/mall/en/WW/Catalog/Product/3KD5042-0RE10-0>

**Service&Support (Manuals, Certificates, Characteristics, FAQs,...)**

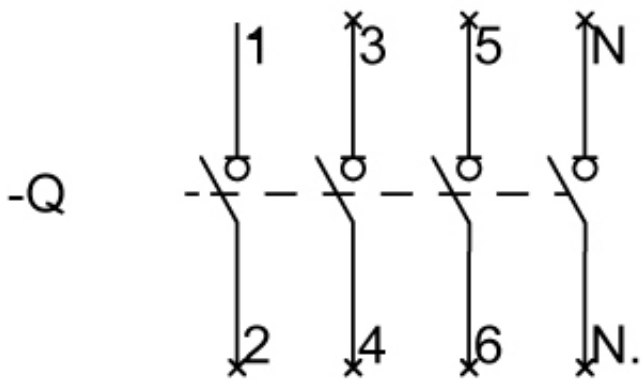
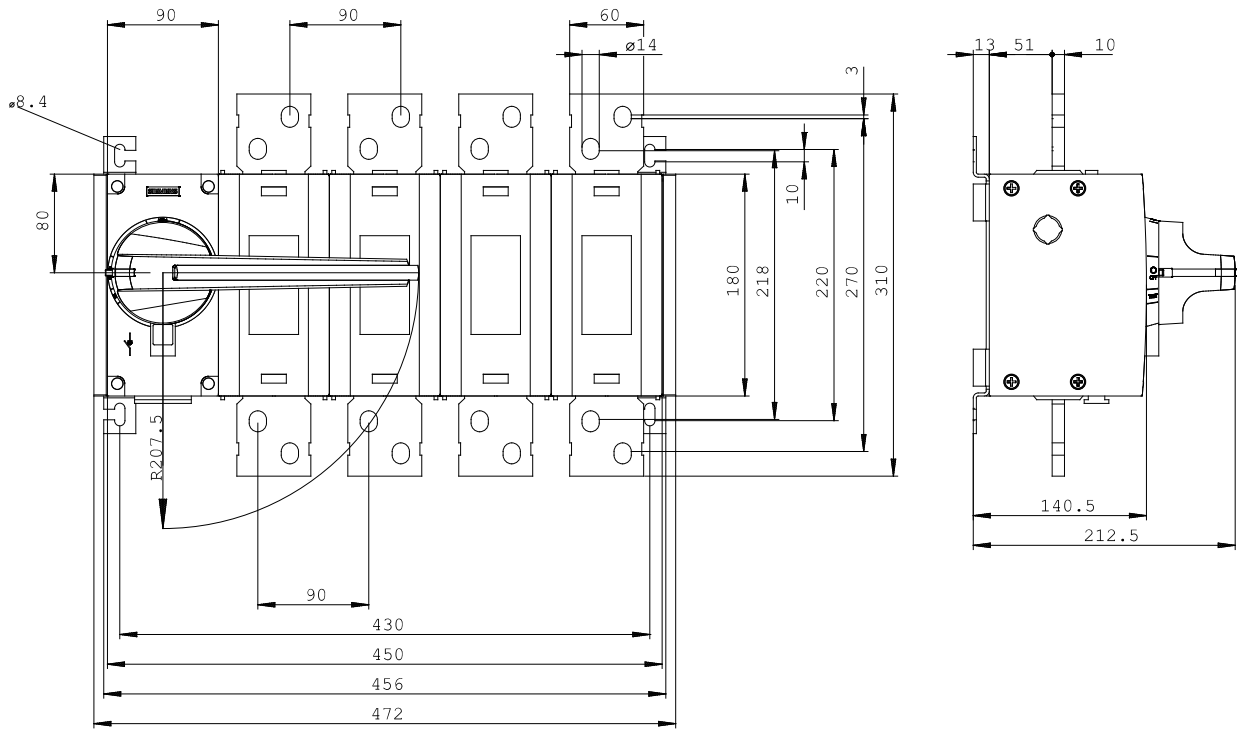
<http://support.automation.siemens.com/WWW/view/en/3KD5042-0RE10-0/all>

**Image database (product images, 2D dimension drawings, 3D models, device circuit diagrams, ...)**

[http://www.automation.siemens.com/bilddb/cax\\_en.aspx?mlfb=3KD5042-0RE10-0](http://www.automation.siemens.com/bilddb/cax_en.aspx?mlfb=3KD5042-0RE10-0)

**CAX-Online-Generator**

<http://www.siemens.com/cax>



**last change:**

Apr 21, 2014