



ACCESSORY FOR 3KD FRAME SIZE 2 DOOR-COUPLING
HANDLE COMPLETE DRIVE GREY INCL. SHAFT 300MM
LENGTH AND COUPLING DRIVER LOCKABLE IN OFF

Similar to image

General technical details:

product brand name		SETRON
Type of the driving mechanism		MANUAL OPERATING MECHANISM
Color / of the activation element		gray
Product equipment		
• interlock		Yes
• can be locked in OFF position		Yes
Size for modular installation devices / suitable for DIN 43880 control cabinets		No
Torque / of the rotary actuator / rated value	N·m	9
Length / of the slider for manual operation	mm	62
Delivery status / factory fitted with cover frame		Yes
Length / of the extension shaft	mm	300
Profile / of extension shaft		
• on coupling driver		8 x 8 mm
• on switch disconnecter		8 x 8 mm

Dimensions and weights:

Height	mm	75
Width	mm	99.5

Depth	mm	366
Net weight	g	347

Certificates/approvals:

General Product Approval

Further information:

Information- and Downloadcenter (Catalogs, Brochures,...)

<http://www.siemens.com/lowvoltage/catalogs>

Industry Mall (Online ordering system)

<https://eb.automation.siemens.com/mall/en/WW/Catalog/Product/3KD9215-1>

Service&Support (Manuals, Certificates, Characteristics, FAQs,...)

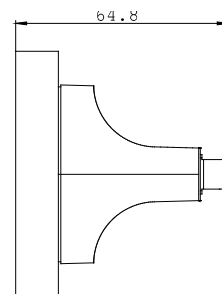
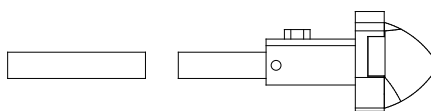
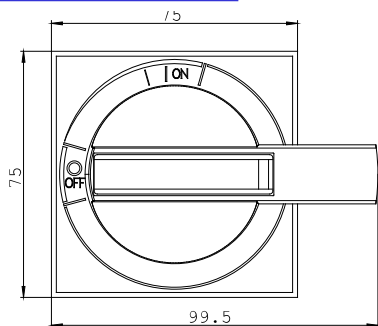
<http://support.automation.siemens.com/WW/view/en/3KD9215-1/all>

Image database (product images, 2D dimension drawings, 3D models, device circuit diagrams, ...)

http://www.automation.siemens.com/bilddb/cax_en.aspx?mlfb=3KD9215-1

CAX-Online-Generator

<http://www.siemens.com/cax>



last change:

Apr 21, 2014